

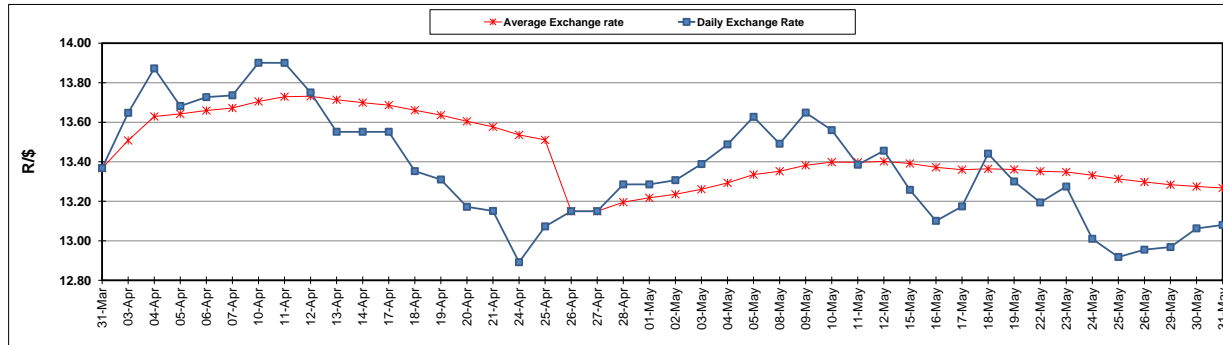
	PETROL 95 ULP	PETROL 93 ULP & LRP	DIESEL 0.05%	DIESEL 0.005%	ILL. PAR.
GAUTENG PUMP PRICE (SA c/l) AS FROM 03/05/2017	1 379.000	1 357.000	-	-	-
WHOLESALE PRICE (SA c/l) AS FROM 03/05/2017	-	-	1 180.330	1 184.730	736.088
SINGLE NATIONAL MAXIMUM RETAIL PRICE	-	-	-	-	947.000
BASIC FUEL PRICE - 31/05/2017 (SA c/l)	554.507	539.668	526.229	529.996	528.470
PRESS RELEASE CONTRIBUTION TO BFP 03/05/2017 - 31/05/2017 (SA c/l)	597.670	585.670	568.630	573.030	565.128
UNIT OVER/(UNDER) RECOVERY (SA c/l) - 31/05/2017	43.163	46.002	42.401	43.034	36.658
AVERAGE BASIC FUEL PRICE 26/04/2017 - 31/05/2017	564.388	548.686	541.208	544.785	537.283
AVERAGE UNIT OVER/(UNDER) RECOVERY 26/04/2017 - 31/05/2017	23.859	27.561	21.653	22.091	21.307

ANALYSIS MOVEMENT OF AVERAGE OVER/(UNDER) RECOVERY

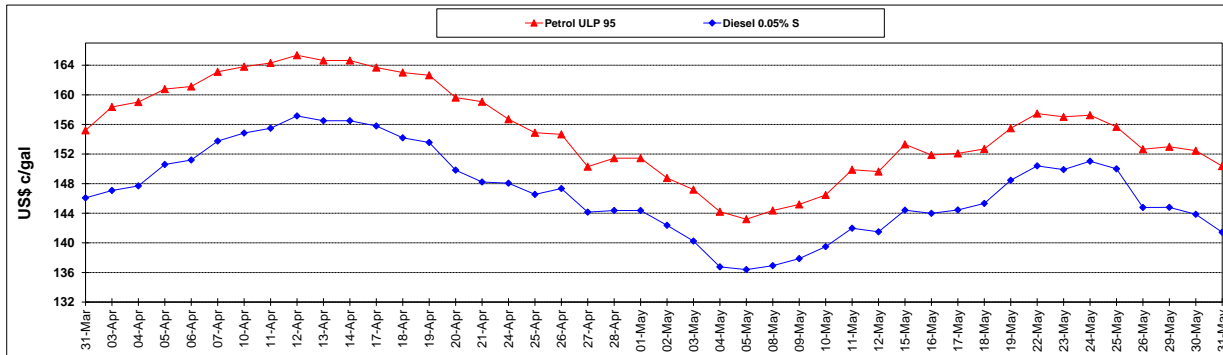
	PETROL 95	PETROL 93	DIESEL 0.05%	DIESEL 0.005%	ILL. PAR.
- MOVEMENT IN INTERNATIONAL PRODUCT PRICES	13.526	17.516	11.745	12.117	11.471
- MOVEMENT IN EXCHANGE RATE	10.333	10.045	9.908	9.974	9.836
AVERAGE UNIT OVER/(UNDER) RECOVERY 26/04/2017 - 31/05/2017	23.859	27.561	21.653	22.091	21.307

R/\$ EXCHANGE RATE - (R/\$ 13.0800 - 31/05/2017)

EXCHANGE RATE USED IN BASIC FUEL PRICE



INTERNATIONAL PRODUCT PRICES OF BASKET USED IN BASIC FUEL PRICE



BASIC FUEL PRICE IN SA CENTS PER LITRE

