

## UPDATE OF THE BASIC FUEL PRICE

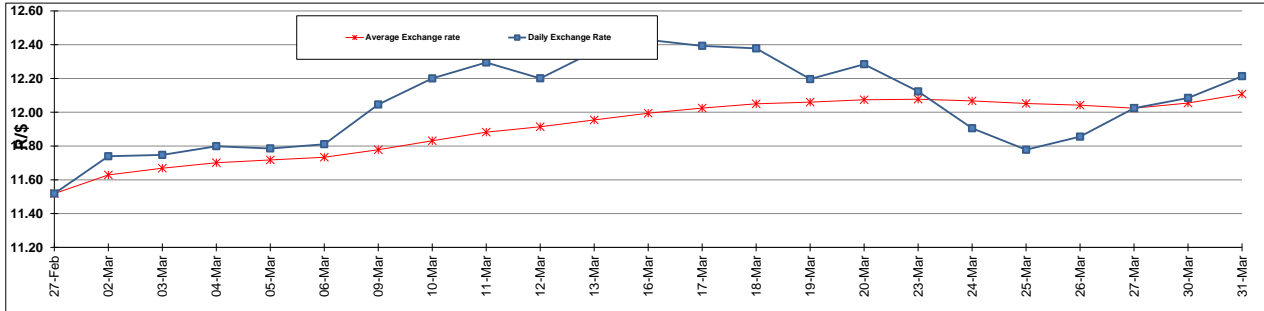
	PETROL 95 ULP	PETROL 93 ULP & LRP	DIESEL 0.05%	DIESEL 0.005%	ILL. PAR.
GAUTENG PUMP PRICE (SA c/l) AS FROM 01/04/2015	1,289.000	1,261.000	-	-	-
WHOLESALE PRICE (SA c/l) AS FROM 01/04/2015	-	-	1,122.790	1,129.190	743.828
SINGLE NATIONAL MAXIMUM RETAIL PRICE	-	-	-	-	957.000
BASIC FUEL PRICE - 31/03/2015 (SA c/l)	587.443	569.689	571.307	577.496	567.703
PRESS RELEASE CONTRIBUTION TO BFP 27/03/2015 - 31/03/2015 (SA c/l)	536.250	524.250	554.630	559.030	564.128
UNIT OVER/(UNDER) RECOVERY (SA c/l) - 31/03/2015	(51.193)	(45.439)	(16.677)	(18.466)	(3.575)
AVERAGE BASIC FUEL PRICE 27/03/2015 - 31/03/2015	595.988	578.460	573.032	579.237	570.633
AVERAGE UNIT OVER/(UNDER) RECOVERY 27/03/2015 - 31/03/2015	(59.738)	(54.210)	(18.402)	(20.207)	(6.505)

### ANALYSIS MOVEMENT OF AVERAGE OVER/(UNDER) RECOVERY

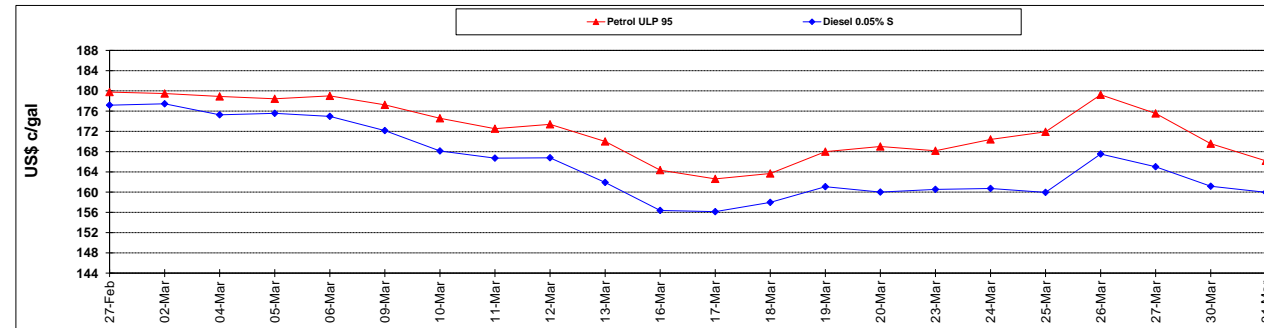
	PETROL 95	PETROL 93	DIESEL 0.05%	DIESEL 0.005%	ILL. PAR.
- MOVEMENT IN INTERNATIONAL PRODUCT PRICES	(56.529)	(51.095)	(15.316)	(17.088)	(3.432)
- MOVEMENT IN EXCHANGE RATE	(3.209)	(3.115)	(3.086)	(3.119)	(3.073)
AVERAGE UNIT OVER/(UNDER) RECOVERY 27/03/2015 - 31/03/2015	(59.738)	(54.210)	(18.402)	(20.207)	(6.505)

### R/\$ EXCHANGE RATE - (R/\$ 12.2133 - 31/03/2015)

#### EXCHANGE RATE USED IN BASIC FUEL PRICE



#### INTERNATIONAL PRODUCT PRICES OF BASKET USED IN BASIC FUEL PRICE



#### BASIC FUEL PRICE IN SA CENTS PER LITRE

