

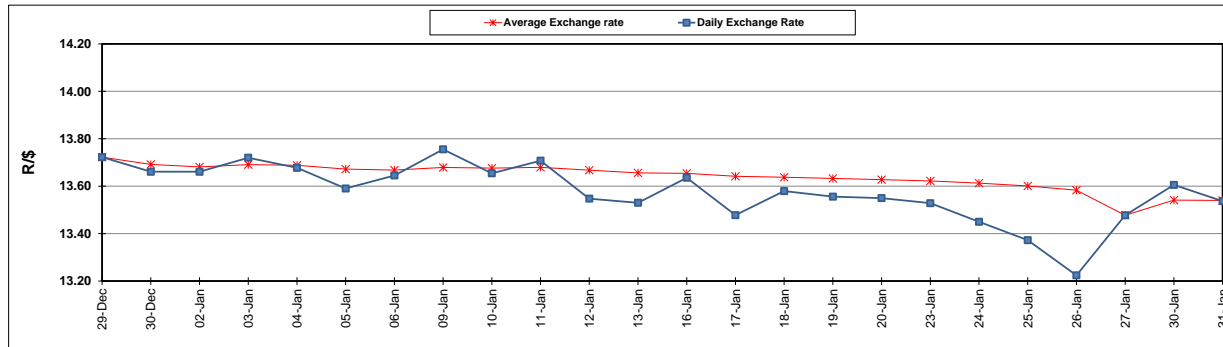
	PETROL 95 ULP	PETROL 93 ULP & LRP	DIESEL 0.05%	DIESEL 0.005%	ILL. PAR.
GAUTENG PUMP PRICE (SA c/l) AS FROM 01/02/2017	1 362.000	1 338.000	-	-	-
WHOLESALE PRICE (SA c/l) AS FROM 01/02/2017	-	-	1 162.830	1 165.230	758.588
SINGLE NATIONAL MAXIMUM RETAIL PRICE	-	-	-	-	976.000
BASIC FUEL PRICE - 31/01/2017 (SA c/l)	612.924	597.687	586.356	588.490	581.014
PRESS RELEASE CONTRIBUTION TO BFP 27/01/2017 - 31/01/2017 (SA c/l)	591.870	577.870	569.630	572.030	574.128
UNIT OVER/(UNDER) RECOVERY (SA c/l) - 31/01/2017	(21.054)	(19.817)	(16.726)	(16.460)	(6.886)
AVERAGE BASIC FUEL PRICE 27/01/2017 - 31/01/2017	612.566	597.321	586.043	588.045	579.328
AVERAGE UNIT OVER/(UNDER) RECOVERY 27/01/2017- 31/01/2017	(20.696)	(19.451)	(16.413)	(16.015)	(5.200)

ANALYSIS MOVEMENT OF AVERAGE OVER/(UNDER) RECOVERY

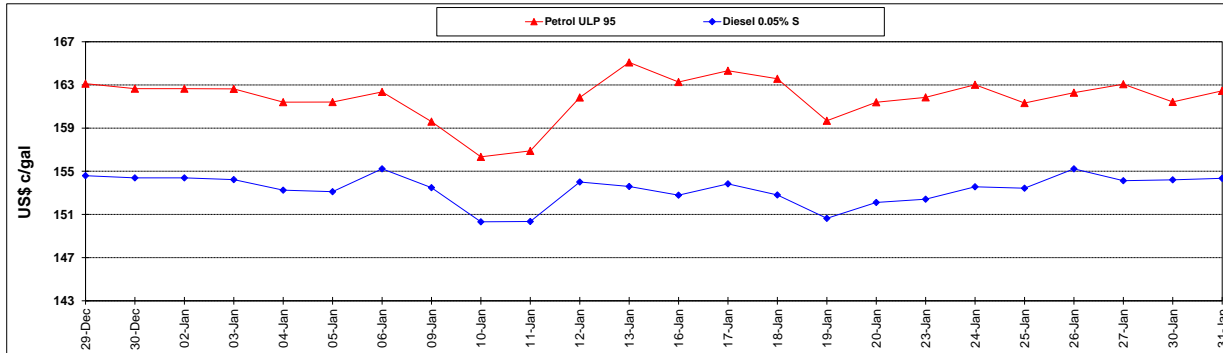
	PETROL 95	PETROL 93	DIESEL 0.05%	DIESEL 0.005%	ILL. PAR.
- MOVEMENT IN INTERNATIONAL PRODUCT PRICES	(22.646)	(21.352)	(18.278)	(17.887)	(7.044)
- MOVEMENT IN EXCHANGE RATE	1.950	1.901	1.865	1.872	1.844
AVERAGE UNIT OVER/(UNDER) RECOVERY 27/01/2017 - 31/01/2017	(20.696)	(19.451)	(16.413)	(16.015)	(5.200)

R/\$ EXCHANGE RATE - (R/\$ 13.5370- 31/01/2017)

EXCHANGE RATE USED IN BASIC FUEL PRICE



INTERNATIONAL PRODUCT PRICES OF BASKET USED IN BASIC FUEL PRICE



BASIC FUEL PRICE IN SA CENTS PER LITRE

