

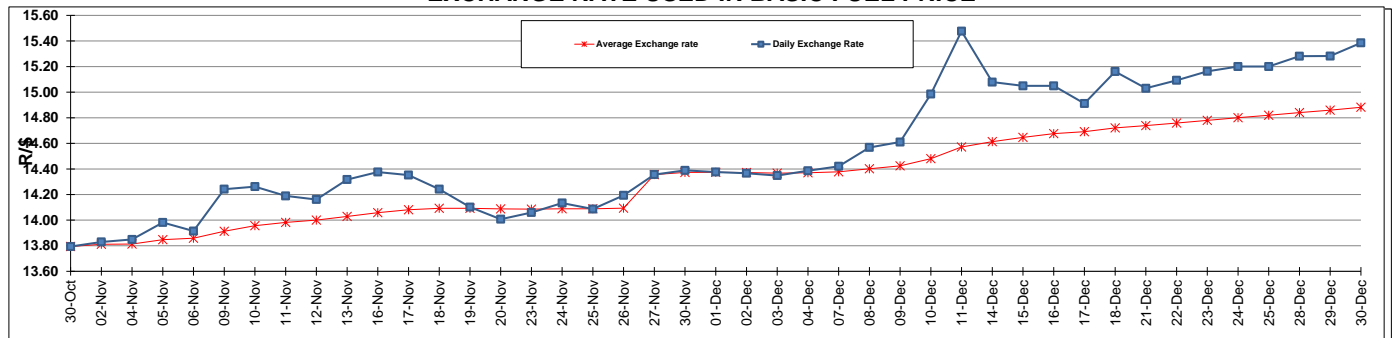
	PETROL 95 ULP	PETROL 93 ULP & LRP	DIESEL 0.05%	DIESEL 0.005%	ILL. PAR.
GAUTENG PUMP PRICE (SA c/l) AS FROM 02/12/2015	1 240.000	1 209.000	-	-	-
WHOLESALE PRICE (SA c/l) AS FROM 02/12/2015	-	-	1 081.170	1 088.570	710.028
SINGLE NATIONAL MAXIMUM RETAIL PRICE	-	-	-	-	912.000
BASIC FUEL PRICE - 30/12/2015 (SA c/l)	560.975	541.337	454.804	460.414	465.804
PRESS RELEASE CONTRIBUTION TO BFP 02/12/2015 - 30/12/2015 (SA c/l)	553.970	532.970	550.630	558.030	550.128
UNIT OVER/(UNDER) RECOVERY (SA c/l) - 30/12/2015	(7.005)	(8.367)	95.826	97.616	84.324
AVERAGE BASIC FUEL PRICE 27/11/2015 - 30/12/2015	552.452	534.818	476.082	481.226	487.313
AVERAGE UNIT OVER/(UNDER) RECOVERY 27/11/2015 - 30/12/2015	2.381	(0.985)	75.298	77.304	63.065

ANALYSIS MOVEMENT OF AVERAGE OVER/(UNDER) RECOVERY

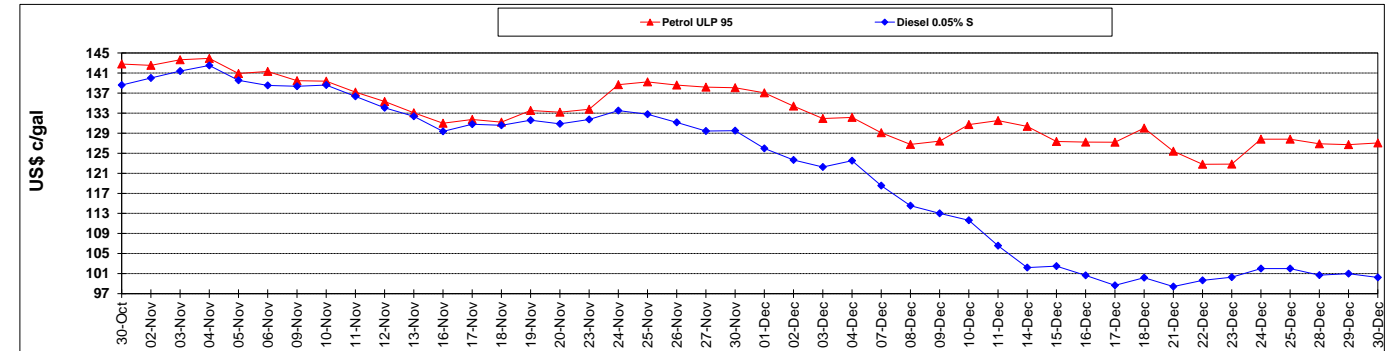
	PETROL 95	PETROL 93	DIESEL 0.05%	DIESEL 0.005%	ILL. PAR.
- MOVEMENT IN INTERNATIONAL PRODUCT PRICES	31.637	27.337	100.510	102.788	88.872
- MOVEMENT IN EXCHANGE RATE	(29.256)	(28.322)	(25.212)	(25.484)	(25.807)
AVERAGE UNIT OVER/(UNDER) RECOVERY 27/11/2015 - 30/12/2015	2.381	(0.985)	75.298	77.304	63.065

R/\$ EXCHANGE RATE - (R/\$ 15.3852 - 30/12/2015)

EXCHANGE RATE USED IN BASIC FUEL PRICE



INTERNATIONAL PRODUCT PRICES OF BASKET USED IN BASIC FUEL PRICE



BASIC FUEL PRICE IN SA CENTS PER LITRE

