

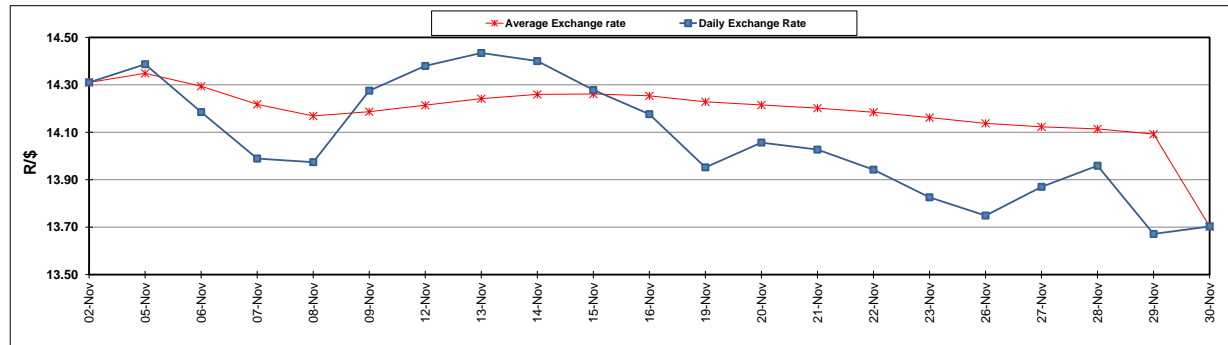
	PETROL 95 ULP	PETROL 93 ULP & LRP	DIESEL 0.05%	DIESEL 0.005%	ILL. PAR.
GAUTENG PUMP PRICE (SA c/l) AS FROM 05/12/2018	1 524.000	1 501.000	-	-	-
WHOLESALE PRICE (SA c/l) AS FROM 05/12/2018	-	-	1 467.340	1 472.740	951.678
SINGLE NATIONAL MAXIMUM RETAIL PRICE	-	-	-	-	1 231.000
BASIC FUEL PRICE - 30/11/2018 (SA c/l)	559.177	552.007	649.261	652.584	663.900
PRESS RELEASE CONTRIBUTION TO BFP 30/11/2018 - 30/11/2018 (SA c/l)	829.250	816.250	917.630	925.030	912.128
UNIT OVER/(UNDER) RECOVERY - 30/11/2018 (SA c/l)	270.073	264.243	268.369	272.446	248.228
AVERAGE BASIC FUEL PRICE 30/11/2018 - 30/11/2018	559.177	552.007	649.261	652.584	663.900
AVERAGE UNIT OVER/(UNDER) RECOVERY 30/11/2018 - 30/11/2018	270.073	264.243	268.369	272.446	248.228

### ANALYSIS MOVEMENT OF AVERAGE OVER/(UNDER) RECOVERY

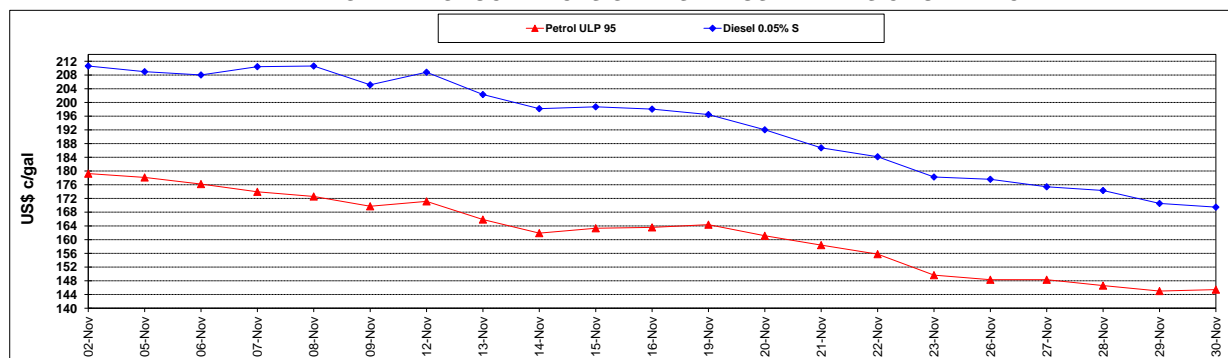
	PETROL 95	PETROL 93	DIESEL 0.05%	DIESEL 0.005%	ILL. PAR.
- MOVEMENT IN INTERNATIONAL PRODUCT PRICES	254.187	248.561	249.924	253.906	229.367
- MOVEMENT IN EXCHANGE RATE	15.886	15.682	18.445	18.540	18.861
AVERAGE UNIT OVER/(UNDER) RECOVERY 30/11/2018 - 30/11/2018	270.073	264.243	268.369	272.446	248.228

### R/\$ EXCHANGE RATE - (R/\$13.7030 - 30/11/2018)

#### EXCHANGE RATE USED IN BASIC FUEL PRICE



#### INTERNATIONAL PRODUCT PRICES OF BASKET USED IN BASIC FUEL PRICE



#### BASIC FUEL PRICE IN SA CENTS PER LITRE

