

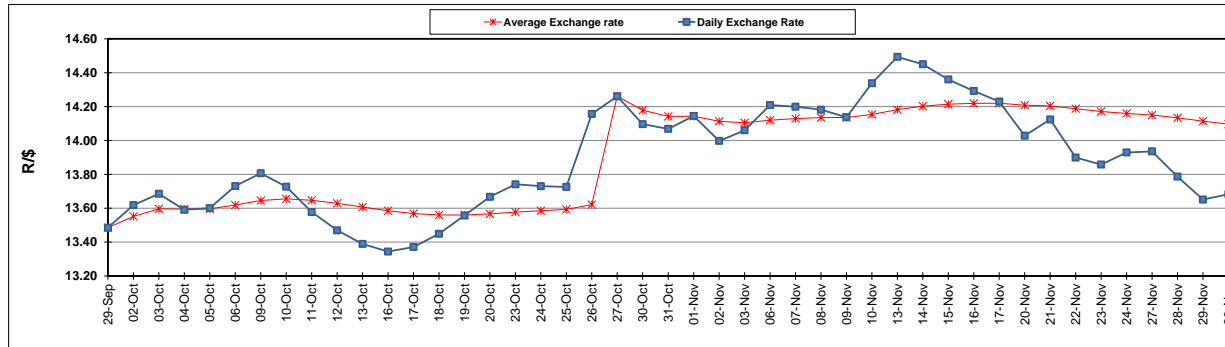
	PETROL 95 ULP	PETROL 93 ULP & LRP	DIESEL 0.05%	DIESEL 0.005%	ILL. PAR.
GAUTENG PUMP PRICE (SA c/l) AS FROM 01/11/2017	1 405.000	1 378.000	-	-	-
WHOLESALE PRICE (SA c/l) AS FROM 01/11/2017	-	-	1 235.330	1 244.730	792.088
SINGLE NATIONAL MAXIMUM RETAIL PRICE	-	-	-	-	1 021.000
BASIC FUEL PRICE - 30/11/2017 (SA c/l)	664.374	650.123	664.430	668.921	670.392
PRESS RELEASE CONTRIBUTION TO BFP 01/11/2017 - 30/11/2017 (SA c/l)	619.070	602.070	623.630	633.030	621.128
UNIT OVER/(UNDER) RECOVERY - 30/11/2017 (SA c/l)	(45.304)	(48.053)	(40.800)	(35.891)	(49.264)
AVERAGE BASIC FUEL PRICE 27/10/2017 - 30/11/2017	686.280	670.860	682.751	688.414	691.926
AVERAGE UNIT OVER/(UNDER) RECOVERY 27/10/2017 - 30/11/2017	(67.690)	(69.270)	(61.881)	(58.624)	(73.318)

### ANALYSIS MOVEMENT OF AVERAGE OVER/(UNDER) RECOVERY

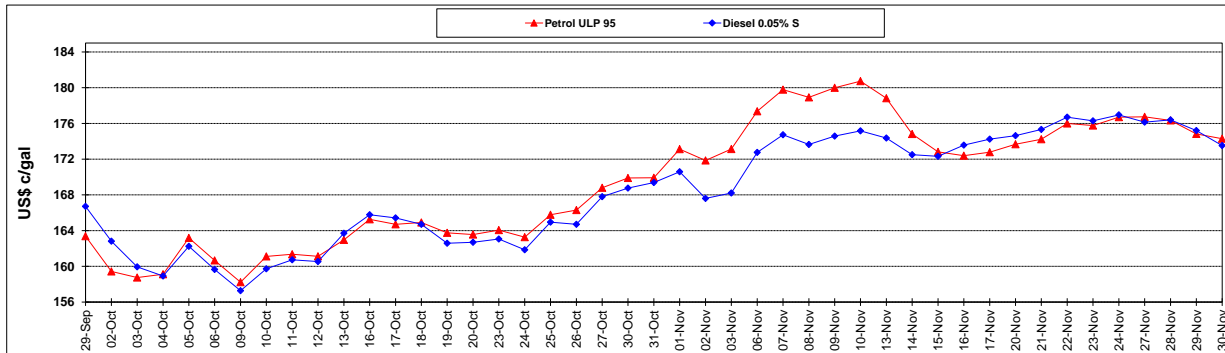
	PETROL 95	PETROL 93	DIESEL 0.05%	DIESEL 0.005%	ILL. PAR.
- MOVEMENT IN INTERNATIONAL PRODUCT PRICES	(44.545)	(46.645)	(38.855)	(35.407)	(49.983)
- MOVEMENT IN EXCHANGE RATE	(23.145)	(22.625)	(23.026)	(23.217)	(23.335)
AVERAGE UNIT OVER/(UNDER) RECOVERY 27/10/2017 - 30/11/2017	(67.690)	(69.270)	(61.881)	(58.624)	(73.318)

R/\$ EXCHANGE RATE - (R/\$ 13.6828 - 30/11/2017)

### EXCHANGE RATE USED IN BASIC FUEL PRICE



### INTERNATIONAL PRODUCT PRICES OF BASKET USED IN BASIC FUEL PRICE



### BASIC FUEL PRICE IN SA CENTS PER LITRE

