

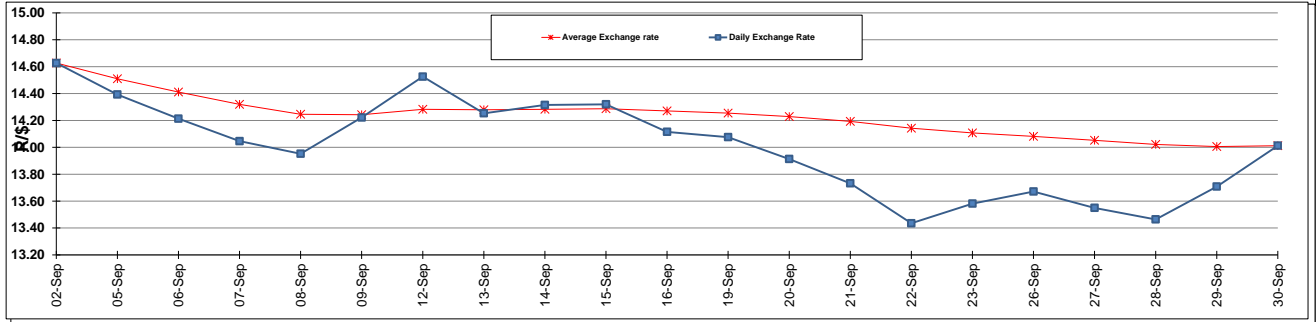
	PETROL 95 ULP	PETROL 93 ULP & LRP	DIESEL 0.05%	DIESEL 0.005%	ILL. PAR.
GAUTENG PUMP PRICE (SA c/l) AS FROM 05/10/2016	1 260.000	1 234.000	-	-	-
WHOLESALE PRICE (SA c/l) AS FROM 05/10/2016	-	-	1 071.870	1 075.270	669.628
SINGLE NATIONAL MAXIMUM RETAIL PRICE	-	-	-	-	858.000
BASIC FUEL PRICE - 30/09/2016 (SA c/l)	561.808	545.216	542.962	546.161	541.230
PRESS RELEASE CONTRIBUTION TO BFP 30/09/2016 - 30/09/2016 (SA c/l)	495.970	478.970	482.630	486.030	486.128
UNIT OVER/(UNDER) RECOVERY (SA c/l) - 30/09/2016	(65.838)	(66.246)	(60.332)	(60.131)	(55.102)
AVERAGE BASIC FUEL PRICE 30/09/2016 - 30/09/2016	561.808	545.216	542.962	546.161	541.230
AVERAGE UNIT OVER/(UNDER) RECOVERY 30/09/2016 - 30/09/2016	(65.838)	(66.246)	(60.332)	(60.131)	(55.102)

### ANALYSIS MOVEMENT OF AVERAGE OVER/(UNDER) RECOVERY

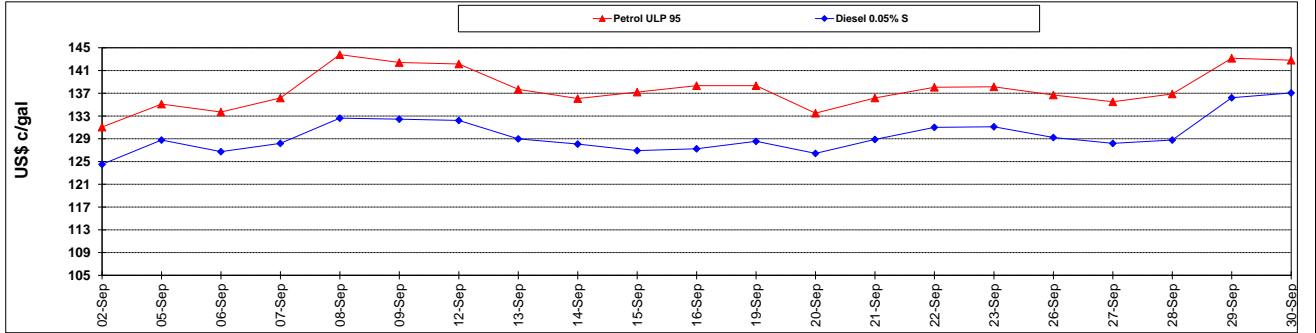
	PETROL 95	PETROL 93	DIESEL 0.05%	DIESEL 0.005%	ILL. PAR.
- MOVEMENT IN INTERNATIONAL PRODUCT PRICES	(65.565)	(65.981)	(60.069)	(59.866)	(54.839)
- MOVEMENT IN EXCHANGE RATE	(0.273)	(0.265)	(0.263)	(0.265)	(0.263)
AVERAGE UNIT OVER/(UNDER) RECOVERY 30/09/2016 - 30/09/2016	(65.838)	(66.246)	(60.332)	(60.131)	(55.102)

**R/\$ EXCHANGE RATE - (R/\$ 14.0125 - 30/09/2016)**

### EXCHANGE RATE USED IN BASIC FUEL PRICE



### INTERNATIONAL PRODUCT PRICES OF BASKET USED IN BASIC FUEL PRICE



### BASIC FUEL PRICE IN SA CENTS PER LITRE

