

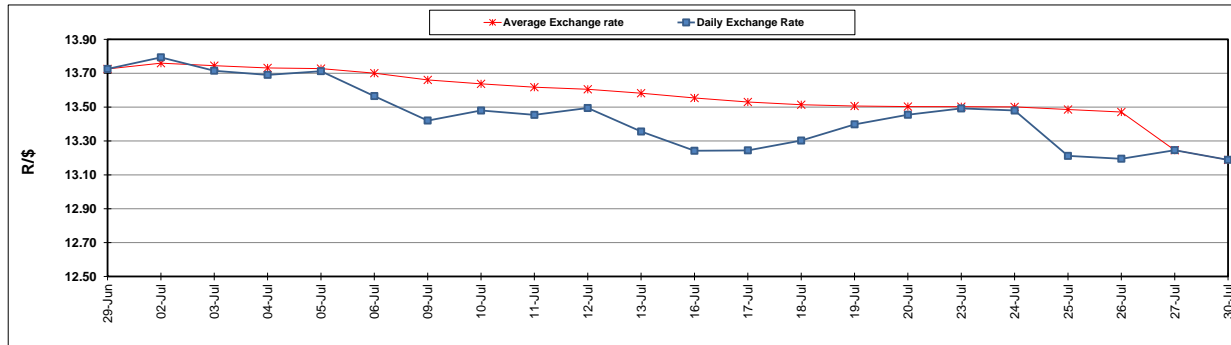
	PETROL 95 ULP	PETROL 93 ULP & LRP	DIESEL 0.05%	DIESEL 0.005%	ILL. PAR.
GAUTENG PUMP PRICE (SA c/l) AS FROM 01/08/2018	1 603.000	1 582.000	-	-	-
WHOLESALE PRICE (SA c/l) AS FROM 01/08/2018	-	-	1 440.830	1 445.230	953.088
SINGLE NATIONAL MAXIMUM RETAIL PRICE	-	-	-	-	1 233.000
BASIC FUEL PRICE - 30/07/2018 (SA c/l)	749.956	736.834	757.334	761.783	768.871
PRESS RELEASE CONTRIBUTION TO BFP 27/07/2018 - 30/07/2018 (SA c/l)	750.070	738.070	771.630	776.030	776.128
UNIT OVER/(UNDER) RECOVERY - 30/07/2018 (SA c/l)	0.114	1.236	14.296	14.247	7.257
AVERAGE BASIC FUEL PRICE 27/07/2018 - 30/07/2018	752.275	739.152	760.017	764.483	771.104
AVERAGE UNIT OVER/(UNDER) RECOVERY 27/06/2018 - 30/07/2018	(2.205)	(1.082)	11.613	11.547	5.024

### ANALYSIS MOVEMENT OF AVERAGE OVER/(UNDER) RECOVERY

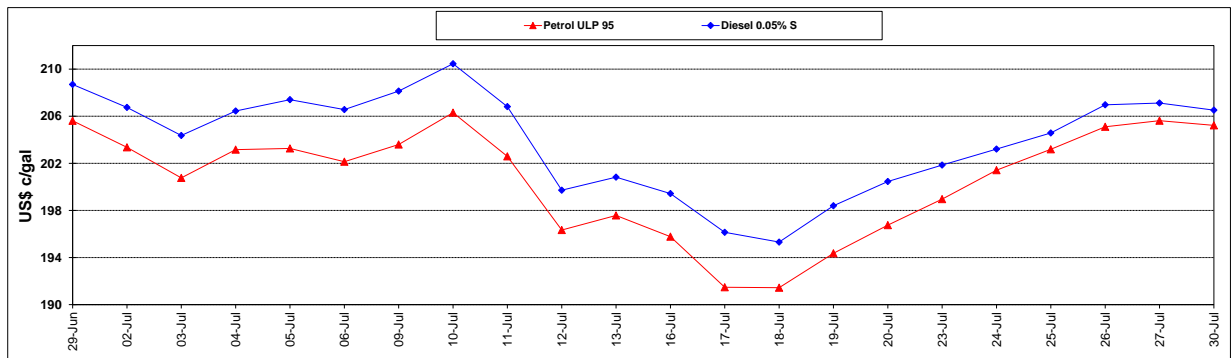
	PETROL 95	PETROL 93	DIESEL 0.05%	DIESEL 0.005%	ILL. PAR.
- MOVEMENT IN INTERNATIONAL PRODUCT PRICES	(16.667)	(15.292)	(2.998)	(3.150)	(9.800)
- MOVEMENT IN EXCHANGE RATE	14.462	14.210	14.611	14.697	14.824
AVERAGE UNIT OVER/(UNDER) RECOVERY 27/07/2018 - 30/07/2018	(2.205)	(1.082)	11.613	11.547	5.024

### R/\$ EXCHANGE RATE - (R/\$13.1885 - 30/07/2018)

#### EXCHANGE RATE USED IN BASIC FUEL PRICE



#### INTERNATIONAL PRODUCT PRICES OF BASKET USED IN BASIC FUEL PRICE



#### BASIC FUEL PRICE IN SA CENTS PER LITRE

