

## UPDATE OF THE BASIC FUEL PRICE

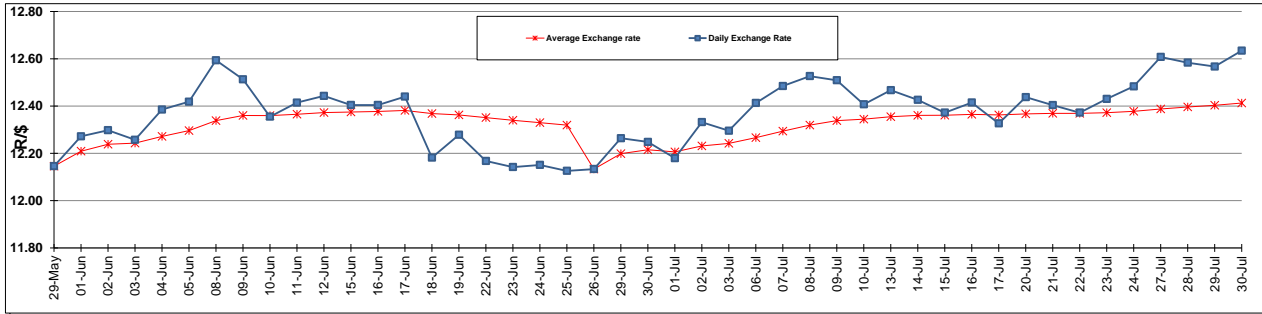
	PETROL 95 ULP	PETROL 93 ULP & LRP	DIESEL 0.05%	DIESEL 0.005%	ILL. PAR.
GAUTENG PUMP PRICE (SA c/l) AS FROM 01/07/2015	1,377.000	1,352.000	-	-	-
WHOLESALE PRICE (SA c/l) AS FROM 01/07/2015	-	-	1,170.790	1,174.190	786.828
SINGLE NATIONAL MAXIMUM RETAIL PRICE	-	-	-	-	1,014.000
BASIC FUEL PRICE - 30/07/2015 (SA c/l)	621.347	602.175	538.234	545.200	534.738
PRESS RELEASE CONTRIBUTION TO BFP 01/07/2015 - 30/07/2015 (SA c/l)	703.650	688.650	642.630	646.030	629.128
UNIT OVER/(UNDER) RECOVERY (SA c/l) - 30/07/2015	82.303	86.475	104.396	100.830	94.390
AVERAGE BASIC FUEL PRICE 26/06/2015 - 30/07/2015	648.325	630.810	566.463	572.260	557.858
AVERAGE UNIT OVER/(UNDER) RECOVERY 26/06/2015 - 30/07/2015	50.405	52.560	75.687	73.290	70.550

### ANALYSIS MOVEMENT OF AVERAGE OVER/(UNDER) RECOVERY

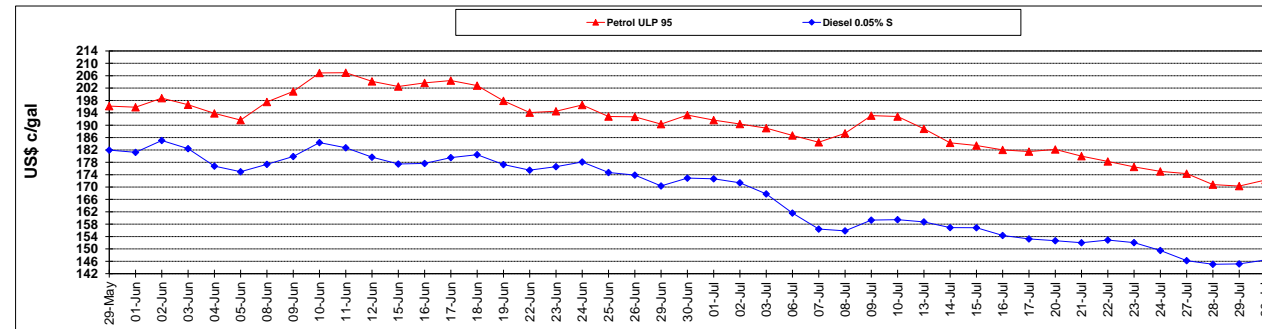
	PETROL 95	PETROL 93	DIESEL 0.05%	DIESEL 0.005%	ILL. PAR.
- MOVEMENT IN INTERNATIONAL PRODUCT PRICES	55.273	57.296	79.940	77.587	74.739
- MOVEMENT IN EXCHANGE RATE	(4.868)	(4.736)	(4.253)	(4.297)	(4.189)
AVERAGE UNIT OVER/(UNDER) RECOVERY 26/06/2015 - 30/07/2015	50.405	52.560	75.687	73.290	70.550

**R/\$ EXCHANGE RATE - (R/\$ 12.6344 - 30/07/2015)**

### EXCHANGE RATE USED IN BASIC FUEL PRICE



### INTERNATIONAL PRODUCT PRICES OF BASKET USED IN BASIC FUEL PRICE



### BASIC FUEL PRICE IN SA CENTS PER LITRE

