

## UPDATE OF THE BASIC FUEL PRICE

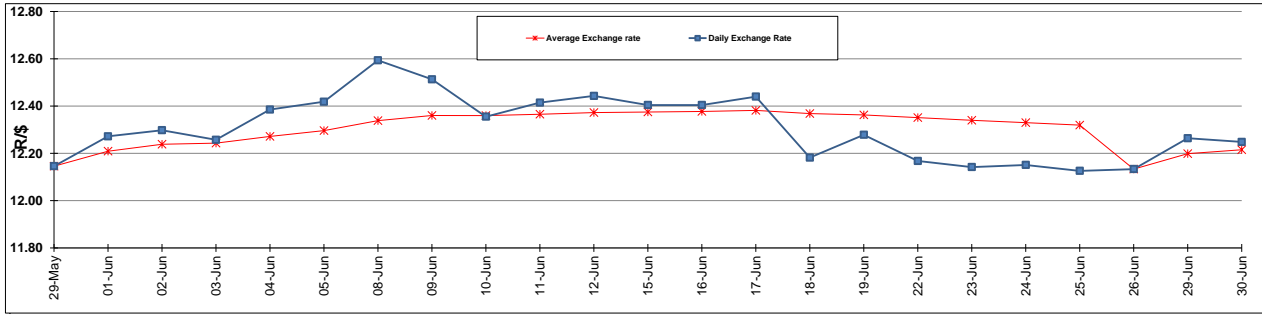
	PETROL 95 ULP	PETROL 93 ULP & LRP	DIESEL 0.05%	DIESEL 0.005%	ILL. PAR.
GAUTENG PUMP PRICE (SA c/l) AS FROM 01/07/2015	1,377.000	1,352.000	-	-	-
WHOLESALE PRICE (SA c/l) AS FROM 01/07/2015	-	-	1,170.790	1,174.190	786.828
SINGLE NATIONAL MAXIMUM RETAIL PRICE	-	-	-	-	1,014.000
BASIC FUEL PRICE - 30/06/2015 (SA c/l)	674.555	658.975	612.097	618.193	604.411
PRESS RELEASE CONTRIBUTION TO BFP 26/06/2015 - 30/06/2015 (SA c/l)	662.650	644.650	638.630	642.030	623.128
UNIT OVER/(UNDER) RECOVERY (SA c/l) - 30/06/2015	(11.905)	(14.325)	26.533	23.837	18.717
AVERAGE BASIC FUEL PRICE 26/06/2015 - 30/06/2015	668.908	653.371	608.824	615.216	600.909
AVERAGE UNIT OVER/(UNDER) RECOVERY 26/06/2015 - 30/06/2015	(6.258)	(8.721)	29.806	26.814	22.219

### ANALYSIS MOVEMENT OF AVERAGE OVER/(UNDER) RECOVERY

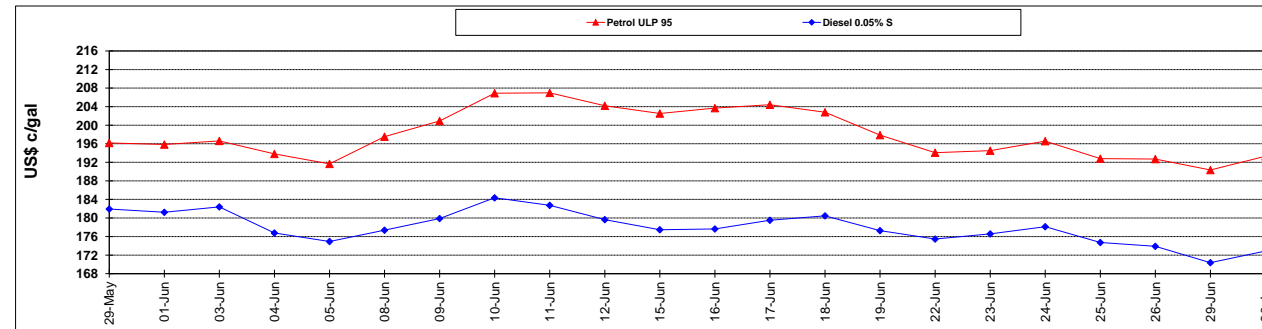
	PETROL 95	PETROL 93	DIESEL 0.05%	DIESEL 0.005%	ILL. PAR.
- MOVEMENT IN INTERNATIONAL PRODUCT PRICES	(11.975)	(14.305)	24.603	21.556	17.083
- MOVEMENT IN EXCHANGE RATE	5.717	5.584	5.203	5.258	5.136
AVERAGE UNIT OVER/(UNDER) RECOVERY 26/06/2015 - 30/06/2015	(6.258)	(8.721)	29.806	26.814	22.219

**R/\$ EXCHANGE RATE - (R/\$ 12.2482 - 30/06/2015)**

### EXCHANGE RATE USED IN BASIC FUEL PRICE



### INTERNATIONAL PRODUCT PRICES OF BASKET USED IN BASIC FUEL PRICE



### BASIC FUEL PRICE IN SA CENTS PER LITRE

