

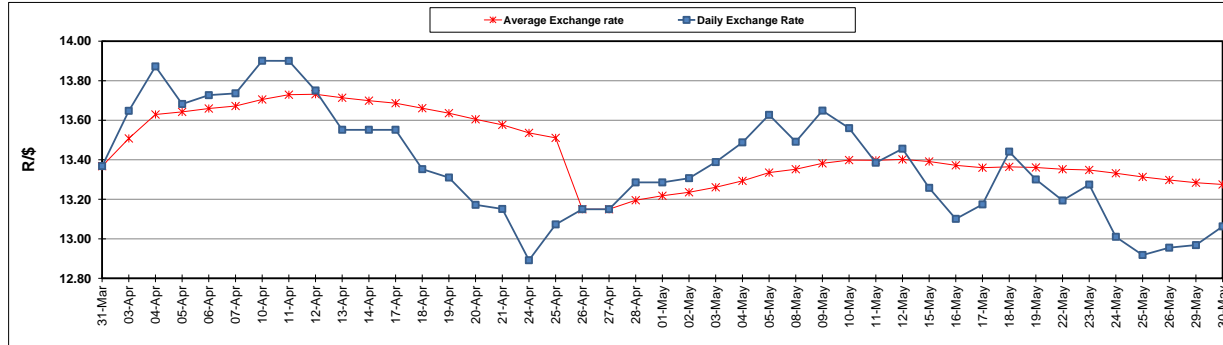
	PETROL 95 ULP	PETROL 93 ULP & LRP	DIESEL 0.05%	DIESEL 0.005%	ILL. PAR.
GAUTENG PUMP PRICE (SA c/l) AS FROM 03/05/2017	1 379.000	1 357.000	-	-	-
WHOLESALE PRICE (SA c/l) AS FROM 03/05/2017	-	-	1 180.330	1 184.730	736.088
SINGLE NATIONAL MAXIMUM RETAIL PRICE	-	-	-	-	947.000
BASIC FUEL PRICE - 30/05/2017 (SA c/l)	561.036	546.229	533.954	537.796	536.349
PRESS RELEASE CONTRIBUTION TO BFP 03/05/2017 - 30/05/2017 (SA c/l)	597.670	585.670	568.630	573.030	565.128
UNIT OVER/(UNDER) RECOVERY (SA c/l) - 30/05/2017	36.634	39.441	34.676	35.234	28.779
AVERAGE BASIC FUEL PRICE 26/04/2017 - 30/05/2017	564.783	549.046	541.807	545.377	537.636
AVERAGE UNIT OVER/(UNDER) RECOVERY 26/04/2017 - 30/05/2017	23.087	26.824	20.823	21.253	20.692

ANALYSIS MOVEMENT OF AVERAGE OVER/(UNDER) RECOVERY

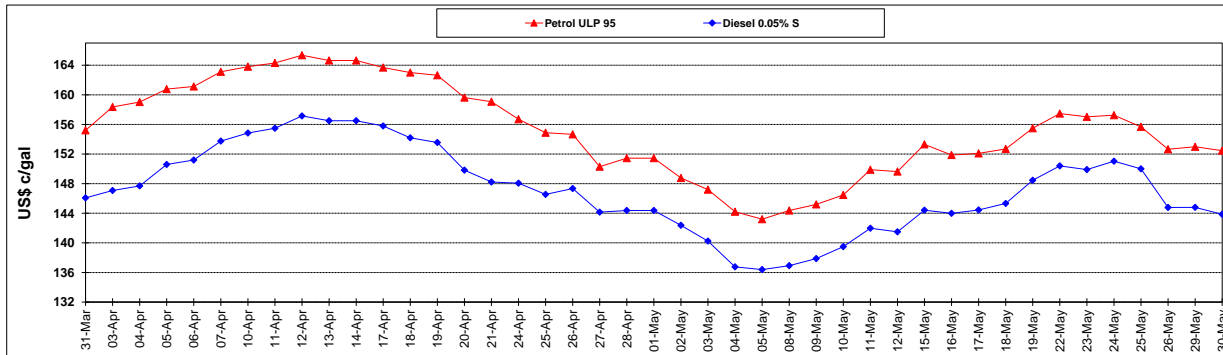
	PETROL 95	PETROL 93	DIESEL 0.05%	DIESEL 0.005%	ILL. PAR.
- MOVEMENT IN INTERNATIONAL PRODUCT PRICES	13.072	17.088	11.215	11.582	11.158
- MOVEMENT IN EXCHANGE RATE	10.015	9.736	9.608	9.671	9.534
AVERAGE UNIT OVER/(UNDER) RECOVERY 26/04/2017 - 30/05/2017	23.087	26.824	20.823	21.253	20.692

R/\$ EXCHANGE RATE - (R/\$ 13.0628 - 30/05/2017)

EXCHANGE RATE USED IN BASIC FUEL PRICE



INTERNATIONAL PRODUCT PRICES OF BASKET USED IN BASIC FUEL PRICE



BASIC FUEL PRICE IN SA CENTS PER LITRE

