

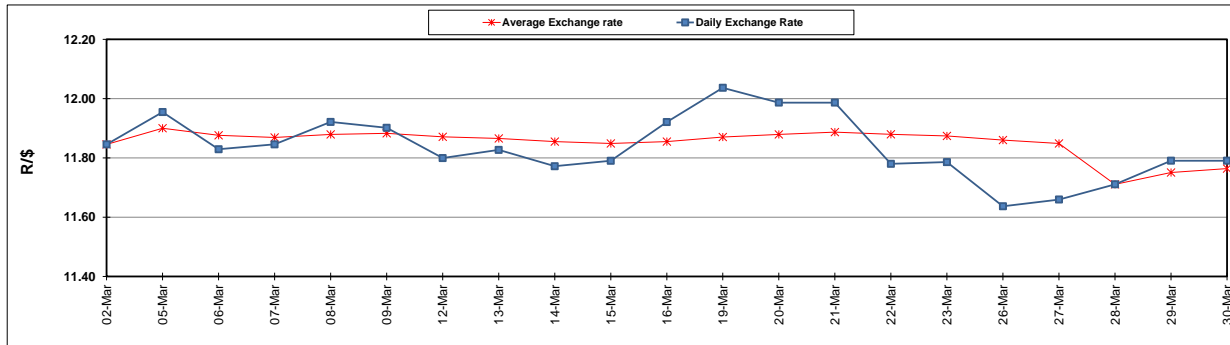
	PETROL 95 ULP	PETROL 93 ULP & LRP	DIESEL 0.05%	DIESEL 0.005%	ILL. PAR.
GAUTENG PUMP PRICE (SA c/l) AS FROM 07/03/2018	1 448.000	1 423.000	-	-	-
WHOLESALE PRICE (SA c/l) AS FROM 07/03/2018	-	-	1 274.830	1 280.230	793.088
SINGLE NATIONAL MAXIMUM RETAIL PRICE	-	-	-	-	1 026.000
BASIC FUEL PRICE - 30/03/2018 (SA c/l)	625.718	611.606	635.733	641.045	642.252
PRESS RELEASE CONTRIBUTION TO BFP 28/03/2018 - 30/03/2018 (SA c/l)	586.170	574.170	598.630	604.030	625.128
UNIT OVER/(UNDER) RECOVERY - 30/03/2018 (SA c/l)	(39.548)	(37.436)	(37.103)	(37.015)	(17.124)
AVERAGE BASIC FUEL PRICE 28/03/2018 - 30/03/2018	625.111	611.030	635.588	640.892	642.421
AVERAGE UNIT OVER/(UNDER) RECOVERY 28/03/2018 - 30/03/2018	(38.941)	(36.860)	(36.958)	(36.862)	(17.293)

ANALYSIS MOVEMENT OF AVERAGE OVER/(UNDER) RECOVERY

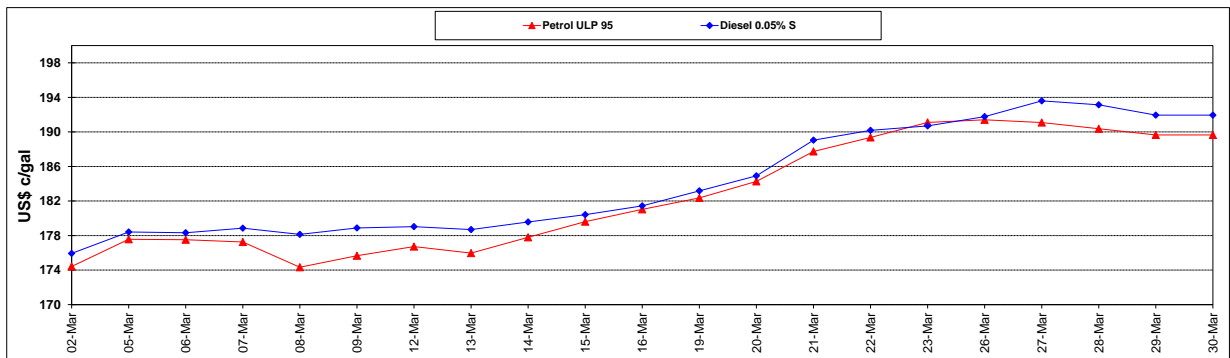
	PETROL 95	PETROL 93	DIESEL 0.05%	DIESEL 0.005%	ILL. PAR.
- MOVEMENT IN INTERNATIONAL PRODUCT PRICES	(43.458)	(41.275)	(41.550)	(41.493)	(21.935)
- MOVEMENT IN EXCHANGE RATE	4.517	4.415	4.592	4.631	4.642
AVERAGE UNIT OVER/(UNDER) RECOVERY 02/03/2018 - 30/03/2018	(38.941)	(36.860)	(36.958)	(36.862)	(17.293)

R/\$ EXCHANGE RATE - (R/\$11.7905 - 30/03/2018)

EXCHANGE RATE USED IN BASIC FUEL PRICE



INTERNATIONAL PRODUCT PRICES OF BASKET USED IN BASIC FUEL PRICE



BASIC FUEL PRICE IN SA CENTS PER LITRE

