

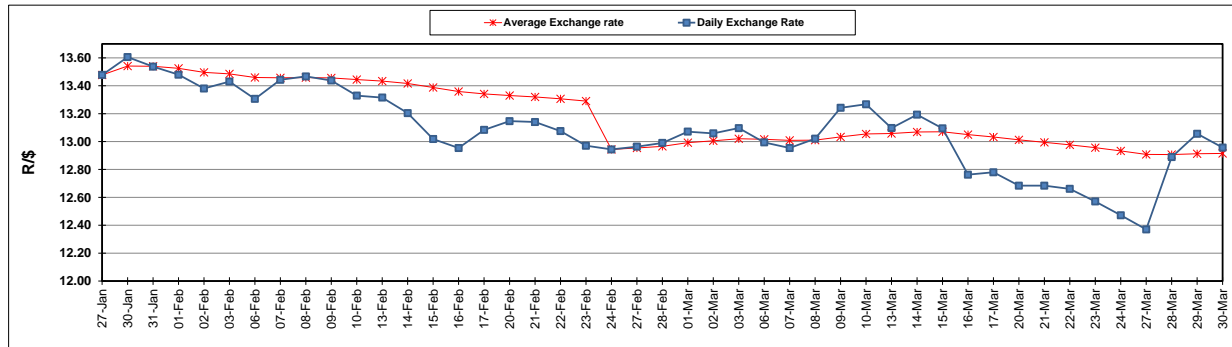
	PETROL 95 ULP	PETROL 93 ULP & LRP	DIESEL 0.05%	DIESEL 0.005%	ILL. PAR.
GAUTENG PUMP PRICE (SA c/l) AS FROM 01/03/2017	1 354.000	1 330.000	-	-	-
WHOLESALE PRICE (SA c/l) AS FROM 01/03/2017	-	-	1 160.830	1 163.230	750.588
SINGLE NATIONAL MAXIMUM RETAIL PRICE	-	-	-	-	966.000
BASIC FUEL PRICE - 30/03/2017 (SA c/l)	562.757	547.571	534.885	538.342	533.937
PRESS RELEASE CONTRIBUTION TO BFP 01/03/2017 - 30/03/2017 (SA c/l)	612.870	598.870	588.630	591.030	583.128
UNIT OVER/(UNDER) RECOVERY (SA c/l) - 30/03/2017	50.113	51.299	53.745	52.688	49.191
AVERAGE BASIC FUEL PRICE 24/02/2017 - 30/03/2017	550.326	537.878	539.136	542.098	532.657
AVERAGE UNIT OVER/(UNDER) RECOVERY 24/02/2017- 30/03/2017	63.504	61.952	49.734	49.172	51.431

ANALYSIS MOVEMENT OF AVERAGE OVER/(UNDER) RECOVERY

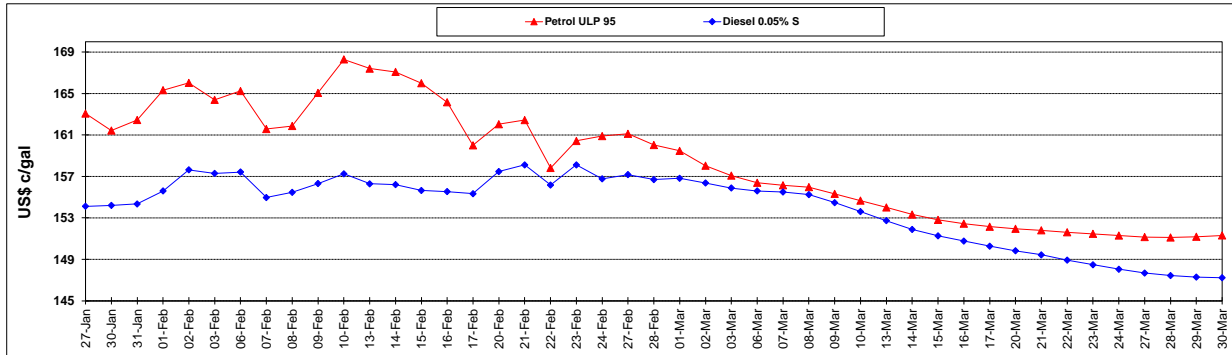
	PETROL 95	PETROL 93	DIESEL 0.05%	DIESEL 0.005%	ILL. PAR.
- MOVEMENT IN INTERNATIONAL PRODUCT PRICES	47.520	46.330	34.075	33.427	35.960
- MOVEMENT IN EXCHANGE RATE	15.984	15.622	15.659	15.745	15.471
AVERAGE UNIT OVER/(UNDER) RECOVERY 24/02/2017 - 30/03/2017	63.504	61.952	49.734	49.172	51.431

R/\$ EXCHANGE RATE - (R/\$ 12.9570 - 30/03/2017)

EXCHANGE RATE USED IN BASIC FUEL PRICE



INTERNATIONAL PRODUCT PRICES OF BASKET USED IN BASIC FUEL PRICE



BASIC FUEL PRICE IN SA CENTS PER LITRE

