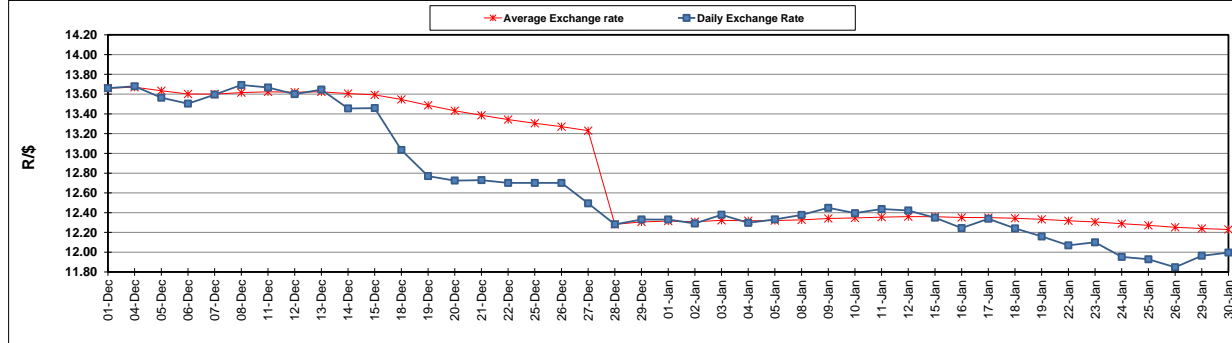


	PETROL 95 ULP	PETROL 93 ULP & LRP	DIESEL 0.05%	DIESEL 0.005%	ILL. PAR.
GAUTENG PUMP PRICE (SA c/l) AS FROM 04/01/2018	1 442.000	1 420.000	-	-	-
WHOLESALE PRICE (SA c/l) AS FROM 04/01/2018	-	-	1 273.630	1 276.030	837.388
SINGLE NATIONAL MAXIMUM RETAIL PRICE	-	-	-	-	1 082.000
BASIC FUEL PRICE - 30/01/2018 (SA c/l)	631.098	617.393	643.013	647.643	648.375
PRESS RELEASE CONTRIBUTION TO BFP 03/01/2018 - 30/01/2018 (SA c/l)	652.170	640.170	662.630	665.030	667.128
UNIT OVER/(UNDER) RECOVERY - 30/01/2018 (SA c/l)	21.072	22.777	19.617	17.387	18.753
AVERAGE BASIC FUEL PRICE 28/12/2017 - 30/01/2018	627.577	617.356	649.914	653.130	652.113
AVERAGE UNIT OVER/(UNDER) RECOVERY 28/12/2017 - 30/01/2018	30.259	27.647	16.383	16.233	19.682

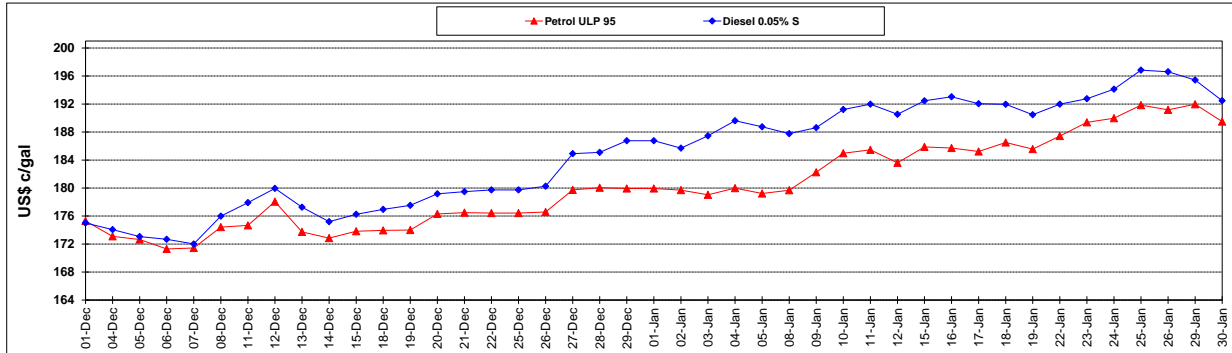
ANALYSIS MOVEMENT OF AVERAGE OVER/(UNDER) RECOVERY					
	PETROL 95	PETROL 93	DIESEL 0.05%	DIESEL 0.005%	ILL. PAR.
- MOVEMENT IN INTERNATIONAL PRODUCT PRICES	(21.081)	(22.858)	(36.785)	(37.199)	(33.666)
- MOVEMENT IN EXCHANGE RATE	51.341	50.505	53.168	53.432	53.348
AVERAGE UNIT OVER/(UNDER) RECOVERY 28/12/2017 - 30/01/2018	30.259	27.647	16.383	16.233	19.682

R/\$ EXCHANGE RATE - (R/\$ 11.9958 - 30/01/2018)

EXCHANGE RATE USED IN BASIC FUEL PRICE



INTERNATIONAL PRODUCT PRICES OF BASKET USED IN BASIC FUEL PRICE



BASIC FUEL PRICE IN SA CENTS PER LITRE

