

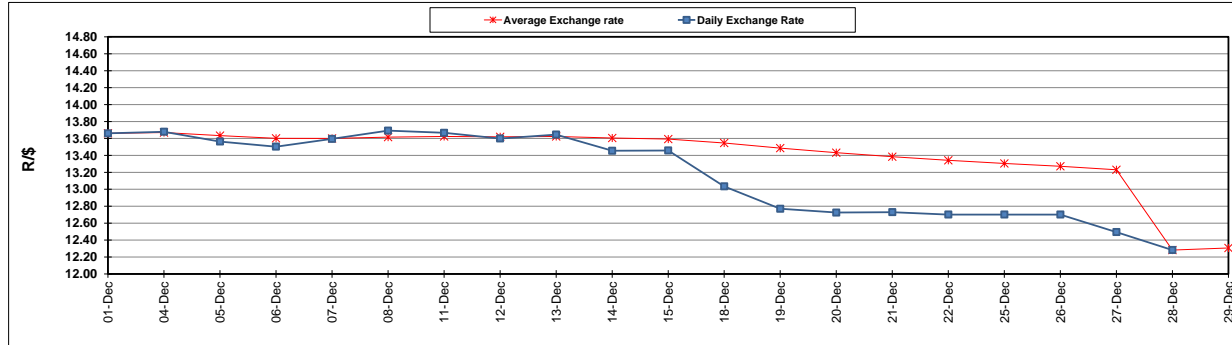
	PETROL 95 ULP	PETROL 93 ULP & LRP	DIESEL 0.05%	DIESEL 0.005%	ILL. PAR.
GAUTENG PUMP PRICE (SA c/l) AS FROM 03/01/2018	1 442.000	1 420.000	-	-	-
WHOLESALE PRICE (SA c/l) AS FROM 03/01/2018	-	-	1 273.630	1 276.030	837.388
SINGLE NATIONAL MAXIMUM RETAIL PRICE	-	-	-	-	1 082.000
BASIC FUEL PRICE - 29/12/2017 (SA c/l)	615.929	606.412	640.707	642.637	644.621
PRESS RELEASE CONTRIBUTION TO BFP 29/12/2017 - 29/12/2017 (SA c/l)	686.170	669.170	684.630	691.030	695.128
UNIT OVER/(UNDER) RECOVERY - 29/12/2017 (SA c/l)	70.241	62.758	43.923	48.393	50.507
AVERAGE BASIC FUEL PRICE 29/12/2017 - 29/12/2017	614.926	604.833	636.734	638.958	640.248
AVERAGE UNIT OVER/(UNDER) RECOVERY 29/12/2017 - 29/12/2017	71.244	64.337	47.896	52.072	54.880

### ANALYSIS MOVEMENT OF AVERAGE OVER/(UNDER) RECOVERY

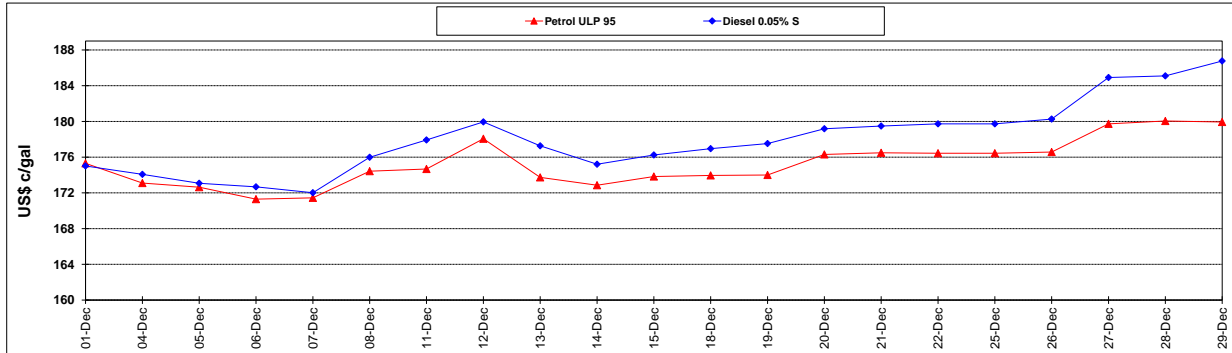
	PETROL 95	PETROL 93	DIESEL 0.05%	DIESEL 0.005%	ILL. PAR.
- MOVEMENT IN INTERNATIONAL PRODUCT PRICES	25.089	18.940	0.104	4.114	6.825
- MOVEMENT IN EXCHANGE RATE	46.155	45.397	47.792	47.958	48.055
AVERAGE UNIT OVER/(UNDER) RECOVERY 29/12/2017 - 29/12/2017	71.244	64.337	47.896	52.072	54.880

R/\$ EXCHANGE RATE - (R/\$ 12.3308 - 29/12/2017)

### EXCHANGE RATE USED IN BASIC FUEL PRICE



### INTERNATIONAL PRODUCT PRICES OF BASKET USED IN BASIC FUEL PRICE



### BASIC FUEL PRICE IN SA CENTS PER LITRE

