

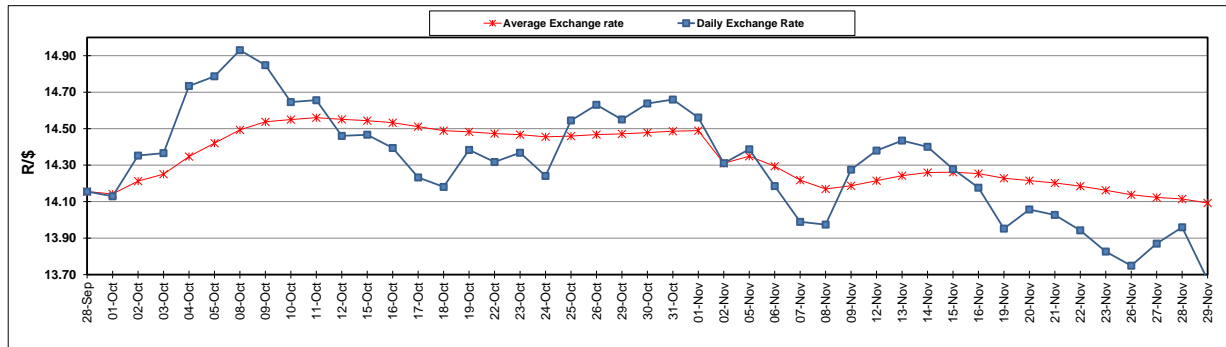
	PETROL 95 ULP	PETROL 93 ULP & LRP	DIESEL 0.05%	DIESEL 0.005%	ILL. PAR.
GAUTENG PUMP PRICE (SA c/l) AS FROM 07/11/2018	1 708.000	1 685.000	-	-	-
WHOLESALE PRICE (SA c/l) AS FROM 07/11/2018	-	-	1 612.750	1 620.150	1 085.088
SINGLE NATIONAL MAXIMUM RETAIL PRICE	-	-	-	-	1 409.000
BASIC FUEL PRICE - 29/11/2018 (SA c/l)	556.351	545.344	651.656	655.301	669.271
PRESS RELEASE CONTRIBUTION TO BFP 07/11/2018 - 29/11/2018 (SA c/l)	829.250	816.250	917.630	925.030	912.128
UNIT OVER/(UNDER) RECOVERY - 29/11/2018 (SA c/l)	272.899	270.906	265.974	269.729	242.857
AVERAGE BASIC FUEL PRICE 02/11/2018 - 29/11/2018	639.637	629.380	762.743	768.388	769.899
AVERAGE UNIT OVER/(UNDER) RECOVERY 02/11/2018 - 29/11/2018	192.901	190.158	150.987	152.292	138.029

### ANALYSIS MOVEMENT OF AVERAGE OVER/(UNDER) RECOVERY

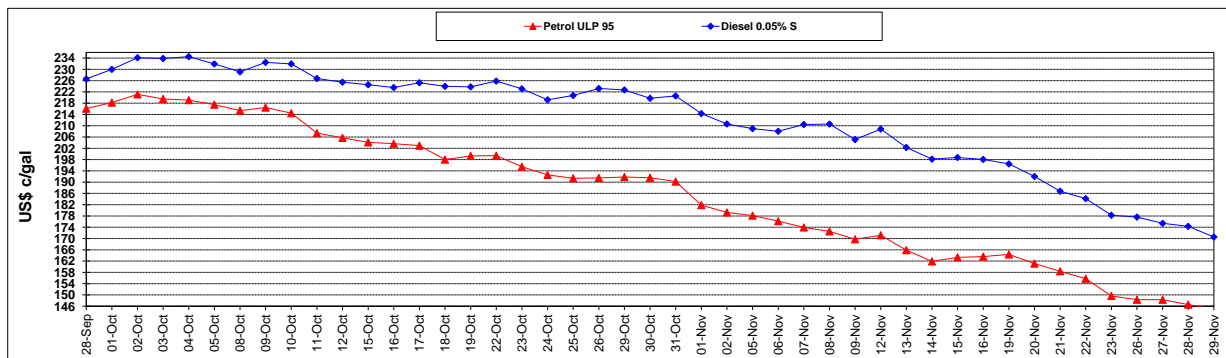
	PETROL 95	PETROL 93	DIESEL 0.05%	DIESEL 0.005%	ILL. PAR.
- MOVEMENT IN INTERNATIONAL PRODUCT PRICES	174.886	172.432	129.505	130.651	116.345
- MOVEMENT IN EXCHANGE RATE	18.015	17.726	21.482	21.641	21.684
AVERAGE UNIT OVER/(UNDER) RECOVERY 02/11/2018 - 29/11/2018	192.901	190.158	150.987	152.292	138.029

### R/\$ EXCHANGE RATE - (R/\$13.6715 - 29/11/2018)

#### EXCHANGE RATE USED IN BASIC FUEL PRICE



#### INTERNATIONAL PRODUCT PRICES OF BASKET USED IN BASIC FUEL PRICE



#### BASIC FUEL PRICE IN SA CENTS PER LITRE

