

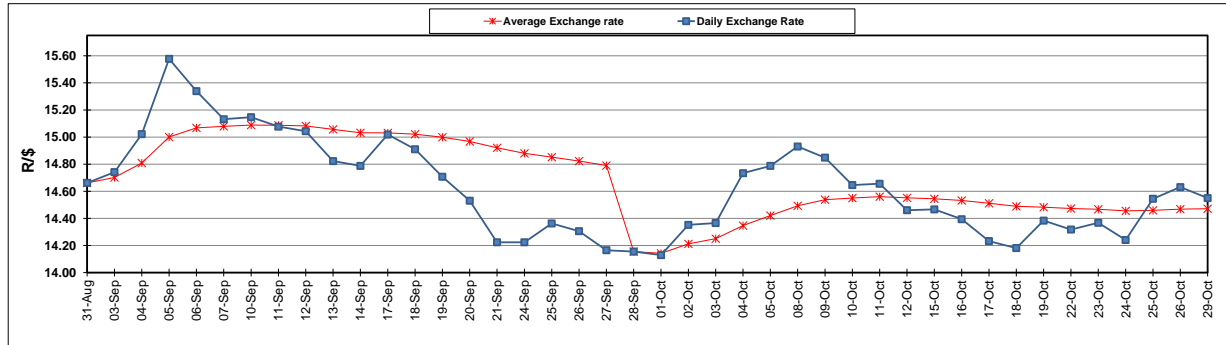
	PETROL 95 ULP	PETROL 93 ULP & LRP	DIESEL 0.05%	DIESEL 0.005%	ILL. PAR.
GAUTENG PUMP PRICE (SA c/l) AS FROM 03/10/2018	1 708.000	1 685.000	-	-	-
WHOLESALE PRICE (SA c/l) AS FROM 03/10/2018	-	-	1 564.830	1 569.230	1 057.088
SINGLE NATIONAL MAXIMUM RETAIL PRICE	-	-	-	-	1 372.000
BASIC FUEL PRICE - 29/10/2018 (SA c/l)	771.583	759.679	894.017	899.248	886.638
PRESS RELEASE CONTRIBUTION TO BFP 03/10/2018 - 29/10/2018 (SA c/l)	851.170	838.170	891.630	896.030	884.128
UNIT OVER/(UNDER) RECOVERY - 29/10/2018 (SA c/l)	79.587	78.491	(2.387)	(3.218)	(2.510)
AVERAGE BASIC FUEL PRICE 28/09/2018 - 29/10/2018	823.826	811.034	905.632	912.320	902.112
AVERAGE UNIT OVER/(UNDER) RECOVERY 28/09/2018 - 29/10/2018	13.707	13.636	(30.911)	(33.199)	(32.166)

### ANALYSIS MOVEMENT OF AVERAGE OVER/(UNDER) RECOVERY

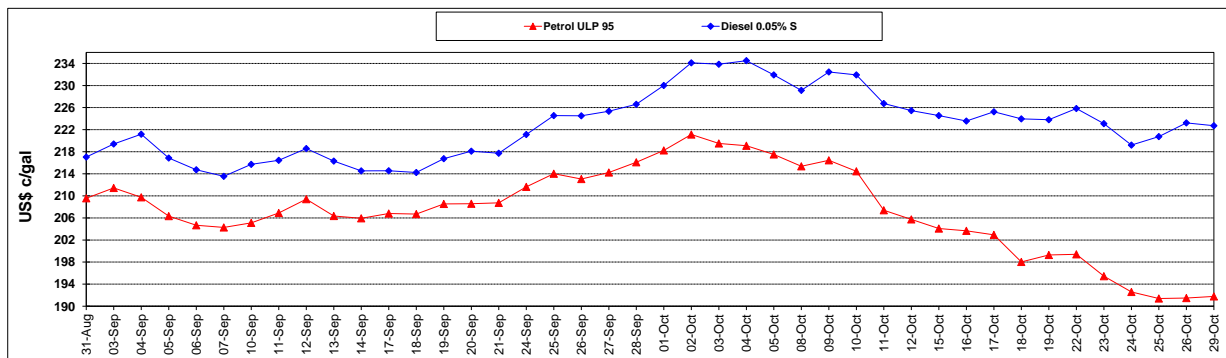
	PETROL 95	PETROL 93	DIESEL 0.05%	DIESEL 0.005%	ILL. PAR.
- MOVEMENT IN INTERNATIONAL PRODUCT PRICES	(4.418)	(4.208)	(50.837)	(53.272)	(52.014)
- MOVEMENT IN EXCHANGE RATE	18.126	17.844	19.926	20.073	19.848
AVERAGE UNIT OVER/(UNDER) RECOVERY 28/09/2018 - 29/10/2018	13.707	13.636	(30.911)	(33.199)	(32.166)

### R/\$ EXCHANGE RATE - (R/\$14.550 - 29/10/2018)

#### EXCHANGE RATE USED IN BASIC FUEL PRICE



#### INTERNATIONAL PRODUCT PRICES OF BASKET USED IN BASIC FUEL PRICE



#### BASIC FUEL PRICE IN SA CENTS PER LITRE

