

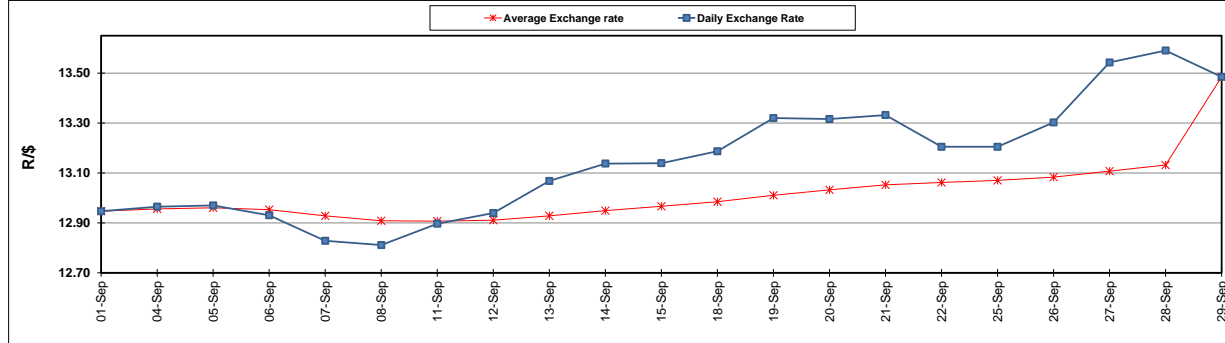
	PETROL 95 ULP	PETROL 93 ULP & LRP	DIESEL 0.05%	DIESEL 0.005%	ILL. PAR.
GAUTENG PUMP PRICE (SA c/l) AS FROM 04/10/2017	1 401.000	1 374.000	-	-	-
WHOLESALE PRICE (SA c/l) AS FROM 04/10/2017	-	-	1 212.330	1 217.730	770.088
SINGLE NATIONAL MAXIMUM RETAIL PRICE	-	-	-	-	992.000
BASIC FUEL PRICE - 29/09/2017 (SA c/l)	613.252	597.668	627.696	637.448	625.386
PRESS RELEASE CONTRIBUTION TO BFP 29/09/2017 - 29/09/2017 (SA c/l)	586.070	573.070	558.630	564.030	561.128
UNIT OVER/(UNDER) RECOVERY (SA c/l) - 29/09/2017	(27.182)	(24.598)	(69.066)	(73.418)	(64.258)
AVERAGE BASIC FUEL PRICE 29/09/2017 - 29/09/2017	613.252	597.668	627.696	637.448	625.386
AVERAGE UNIT OVER/(UNDER) RECOVERY 29/09/2017 - 29/09/2017	(27.182)	(24.598)	(69.066)	(73.418)	(64.258)

ANALYSIS MOVEMENT OF AVERAGE OVER/(UNDER) RECOVERY

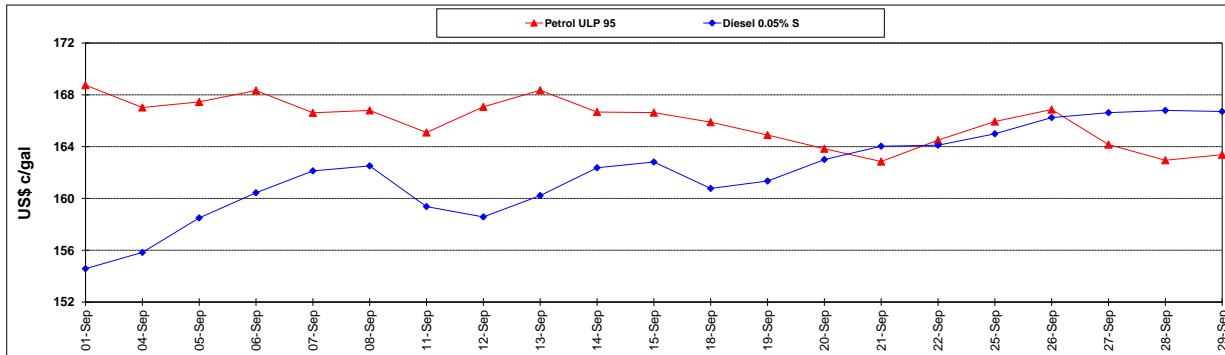
	PETROL 95	PETROL 93	DIESEL 0.05%	DIESEL 0.005%	ILL. PAR.
- MOVEMENT IN INTERNATIONAL PRODUCT PRICES	(11.115)	(8.939)	(52.621)	(56.717)	(47.873)
- MOVEMENT IN EXCHANGE RATE	(16.067)	(15.659)	(16.445)	(16.701)	(16.385)
AVERAGE UNIT OVER/(UNDER) RECOVERY 29/09/2017 - 29/09/2017	(27.182)	(24.598)	(69.066)	(73.418)	(64.258)

R/\$ EXCHANGE RATE - (R/\$13.4850 - 29/09/2017)

EXCHANGE RATE USED IN BASIC FUEL PRICE



INTERNATIONAL PRODUCT PRICES OF BASKET USED IN BASIC FUEL PRICE



BASIC FUEL PRICE IN SA CENTS PER LITRE

