

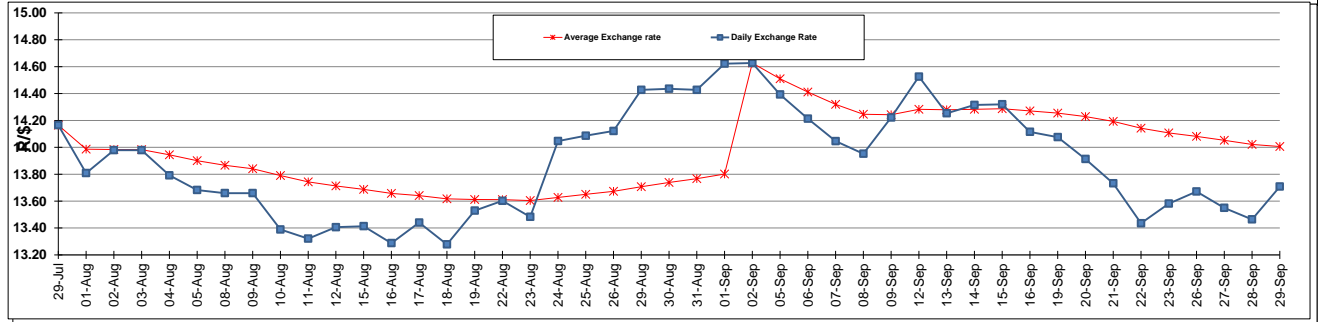
	PETROL 95 ULP	PETROL 93 ULP & LRP	DIESEL 0.05%	DIESEL 0.005%	ILL. PAR.
GAUTENG PUMP PRICE (SA c/l) AS FROM 07/09/2016	1 217.000	1 190.000	-	-	-
WHOLESALE PRICE (SA c/l) AS FROM 07/09/2016	-	-	1 048.870	1 052.270	647.628
SINGLE NATIONAL MAXIMUM RETAIL PRICE	-	-	-	-	828.000
BASIC FUEL PRICE - 29/09/2016 (SA c/l)	551.084	535.183	528.240	531.495	526.075
PRESS RELEASE CONTRIBUTION TO BFP 07/09/2016 - 29/09/2016 (SA c/l)	495.970	478.970	482.630	486.030	486.128
UNIT OVER/(UNDER) RECOVERY (SA c/l) - 29/09/2016	(55.114)	(56.213)	(45.610)	(45.465)	(39.947)
AVERAGE BASIC FUEL PRICE 02/09/2016 - 29/09/2016	541.781	526.443	513.560	516.406	514.717
AVERAGE UNIT OVER/(UNDER) RECOVERY 02/09/2016 - 29/09/2016	(43.111)	(44.773)	(23.730)	(23.026)	(21.539)

### ANALYSIS MOVEMENT OF AVERAGE OVER/(UNDER) RECOVERY

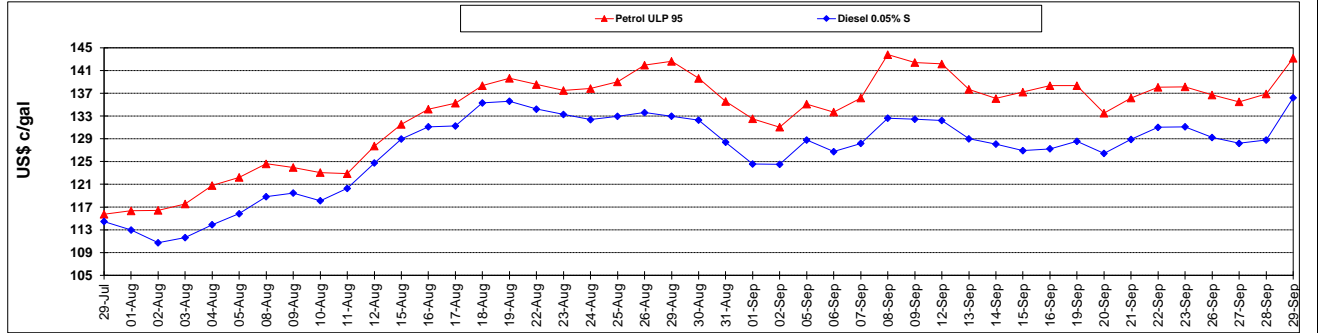
	PETROL 95	PETROL 93	DIESEL 0.05%	DIESEL 0.005%	ILL. PAR.
- MOVEMENT IN INTERNATIONAL PRODUCT PRICES	(35.216)	(37.101)	(16.246)	(15.501)	(14.038)
- MOVEMENT IN EXCHANGE RATE	(7.895)	(7.672)	(7.484)	(7.525)	(7.501)
AVERAGE UNIT OVER/(UNDER) RECOVERY 02/09/2016 - 29/09/2016	(43.111)	(44.773)	(23.730)	(23.026)	(21.539)

**R/\$ EXCHANGE RATE - (R/\$ 13.7083 - 29/09/2016)**

### EXCHANGE RATE USED IN BASIC FUEL PRICE



### INTERNATIONAL PRODUCT PRICES OF BASKET USED IN BASIC FUEL PRICE



### BASIC FUEL PRICE IN SA CENTS PER LITRE

