

## UPDATE OF THE BASIC FUEL PRICE

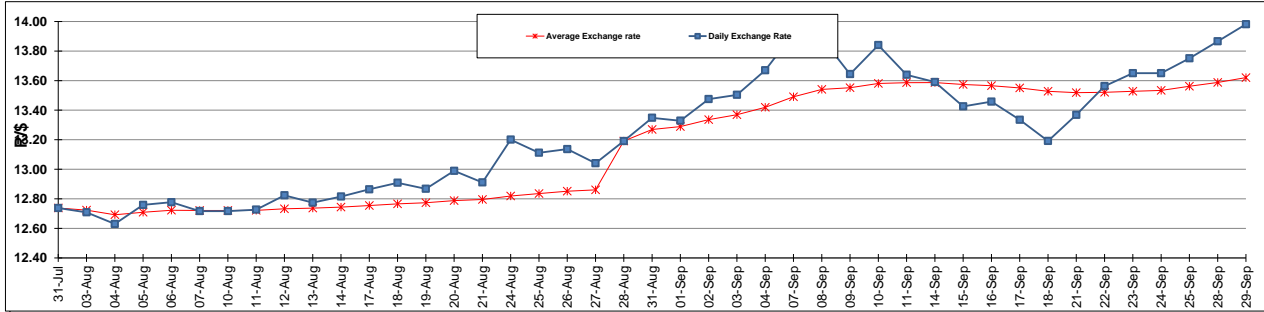
	PETROL 95 ULP	PETROL 93 ULP & LRP	DIESEL 0.05%	DIESEL 0.005%	ILL. PAR.
GAUTENG PUMP PRICE (SA c/l) AS FROM 02/09/2015	1,257.000	1,232.000	-	-	-
WHOLESALE PRICE (SA c/l) AS FROM 02/09/2015	-	-	1,040.970	1,049.370	661.828
SINGLE NATIONAL MAXIMUM RETAIL PRICE	-	-	-	-	847.000
BASIC FUEL PRICE - 29/09/2015 (SA c/l)	596.438	578.820	580.239	585.236	567.764
PRESS RELEASE CONTRIBUTION TO BFP 02/09/2015 - 29/09/2015 (SA c/l)	578.870	563.870	512.630	521.030	504.128
UNIT OVER/(UNDER) RECOVERY (SA c/l) - 29/09/2015	(17.568)	(14.950)	(67.609)	(64.206)	(63.636)
AVERAGE BASIC FUEL PRICE 28/08/2015 - 29/09/2015	592.379	571.127	572.226	578.601	560.581
AVERAGE UNIT OVER/(UNDER) RECOVERY 28/08/2015 - 29/09/2015	(3.909)	2.343	(52.553)	(50.918)	(49.279)

### ANALYSIS MOVEMENT OF AVERAGE OVER/(UNDER) RECOVERY

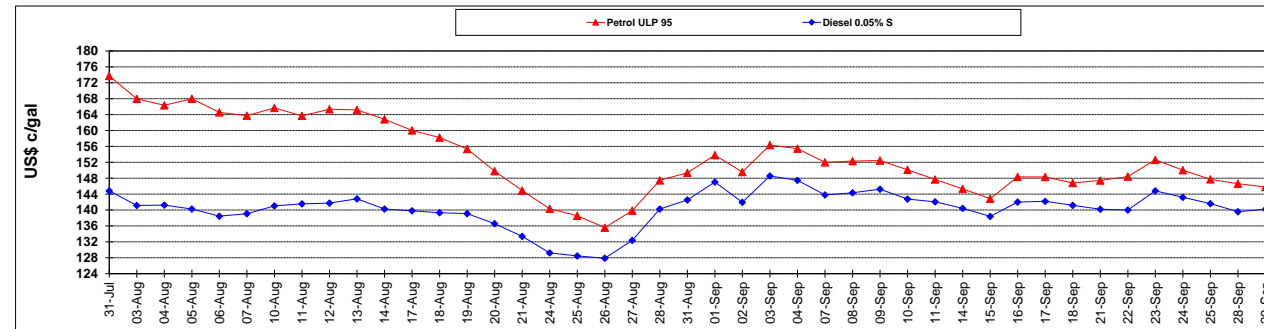
	PETROL 95	PETROL 93	DIESEL 0.05%	DIESEL 0.005%	ILL. PAR.
- MOVEMENT IN INTERNATIONAL PRODUCT PRICES	29.123	34.190	(20.645)	(18.655)	(18.020)
- MOVEMENT IN EXCHANGE RATE	(33.032)	(31.847)	(31.908)	(32.264)	(31.259)
AVERAGE UNIT OVER/(UNDER) RECOVERY 28/08/2015 - 29/09/2015	(3.909)	2.343	(52.553)	(50.918)	(49.279)

**R/\$ EXCHANGE RATE - (R/\$ 13.9814 - 29/09/2015)**

### EXCHANGE RATE USED IN BASIC FUEL PRICE



### INTERNATIONAL PRODUCT PRICES OF BASKET USED IN BASIC FUEL PRICE



### BASIC FUEL PRICE IN SA CENTS PER LITRE

