

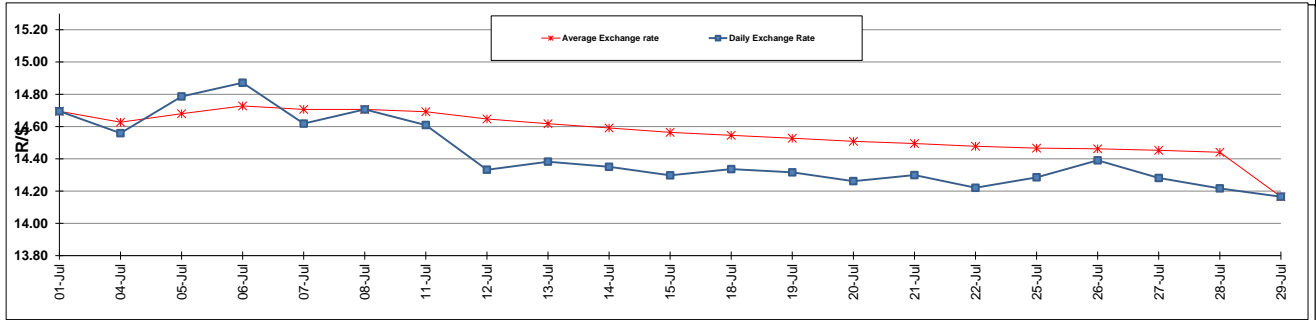
	PETROL 95 ULP	PETROL 93 ULP & LRP	DIESEL 0.05%	DIESEL 0.005%	ILL. PAR.
GAUTENG PUMP PRICE (SA c/l) AS FROM 03/08/2016	1 235.000	1 208.000	-	-	-
WHOLESALE PRICE (SA c/l) AS FROM 03/08/2016	-	-	1 096.870	1 101.270	694.628
SINGLE NATIONAL MAXIMUM RETAIL PRICE	-	-	-	-	891.000
BASIC FUEL PRICE - 29/07/2016 (SA c/l)	467.622	451.981	465.482	468.959	468.855
PRESS RELEASE CONTRIBUTION TO BFP 29/07/2116 - 29/07/2016 (SA c/l)	612.970	595.970	604.630	608.030	599.128
UNIT OVER/(UNDER) RECOVERY (SA c/l) - 29/07/2016	145.348	143.989	139.148	139.071	130.273
AVERAGE BASIC FUEL PRICE 29/07/2116 - 29/07/2016	467.622	451.981	465.482	468.959	468.855
AVERAGE UNIT OVER/(UNDER) RECOVERY 29/07/2116 - 29/07/2016	145.348	143.989	139.148	139.071	130.273

ANALYSIS MOVEMENT OF AVERAGE OVER/(UNDER) RECOVERY

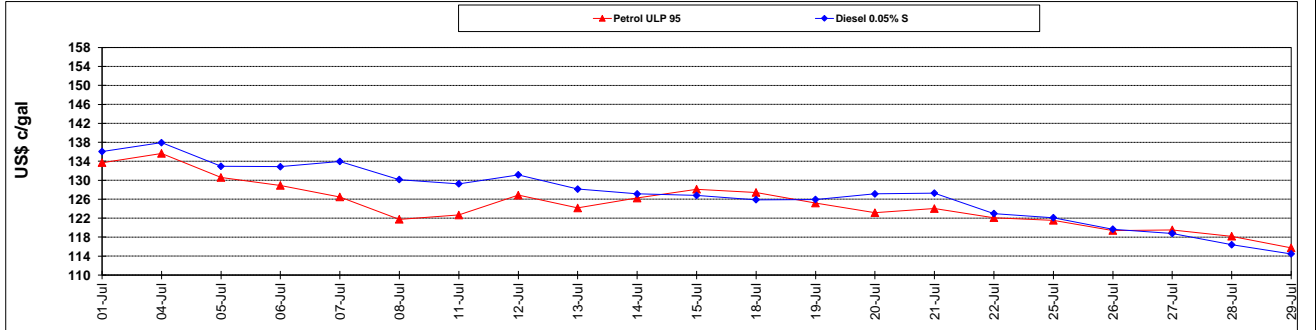
	PETROL 95	PETROL 93	DIESEL 0.05%	DIESEL 0.005%	ILL. PAR.
- MOVEMENT IN INTERNATIONAL PRODUCT PRICES	136.246	135.192	130.088	129.943	121.147
- MOVEMENT IN EXCHANGE RATE	9.102	8.797	9.060	9.128	9.126
AVERAGE UNIT OVER/(UNDER) RECOVERY 29/07/2016 - 29/07/2016	145.348	143.989	139.148	139.071	130.273

R/\$ EXCHANGE RATE - (R/\$ 14.1650 - 29/07/2016)

EXCHANGE RATE USED IN BASIC FUEL PRICE



INTERNATIONAL PRODUCT PRICES OF BASKET USED IN BASIC FUEL PRICE



BASIC FUEL PRICE IN SA CENTS PER LITRE

