

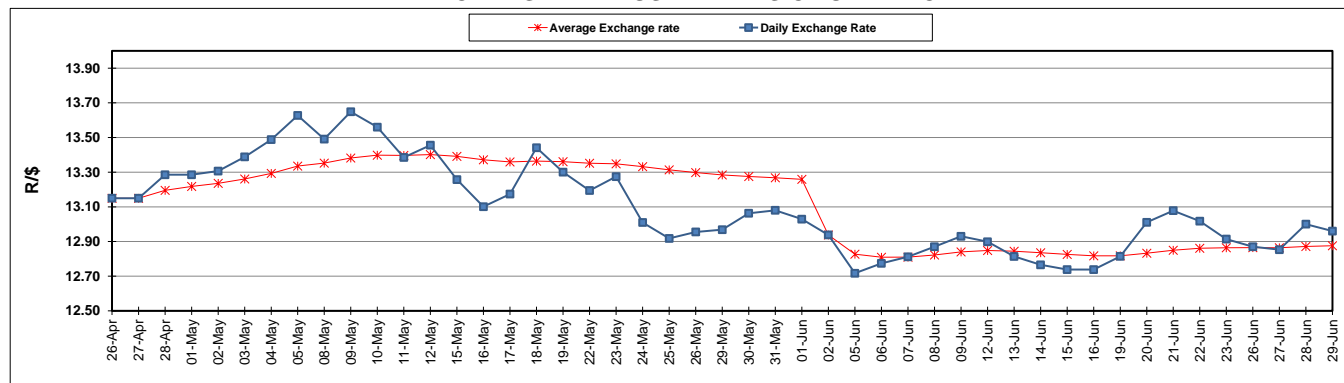
	PETROL 95 ULP	PETROL 93 ULP & LRP	DIESEL 0.05%	DIESEL 0.005%	ILL. PAR.
GAUTENG PUMP PRICE (SA c/l) AS FROM 07/06/2017	1,354.000	1,332.000	-	-	-
WHOLESALE PRICE (SA c/l) AS FROM 07/06/2017	-	-	1,157.330	1,161.730	714.088
SINGLE NATIONAL MAXIMUM RETAIL PRICE	-	-	-	-	917.000
BASIC FUEL 29/06/2017 (SA c/l)	517.565	500.844	504.457	509.838	504.164
PRESS RELEASE CONTRIBUTION TO BFP 07/06/2017 - 29/06/2017 (SA c/l)	572.670	560.670	545.630	550.030	543.128
UNIT OVER/(UNDER) RECOVERY (SA c/l) - 29/06/2017	55.105	59.826	41.173	40.192	38.964
AVERAGE BASIC FUEL PRICE 02/06/2017 - 29/06/2017	509.338	496.222	489.873	493.922	489.938
AVERAGE UNIT OVER/(UNDER) RECOVERY 02/06/2017- 29/06/2017	67.082	68.198	59.207	59.558	56.490

### ANALYSIS MOVEMENT OF AVERAGE OVER/(UNDER) RECOVERY

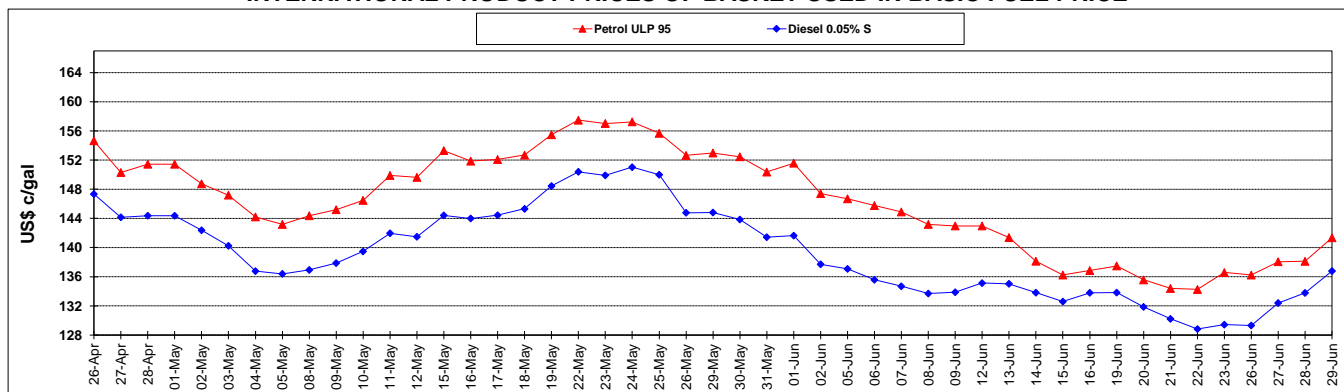
	PETROL 95	PETROL 93	DIESEL 0.05%	DIESEL 0.005%	ILL. PAR.
- MOVEMENT IN INTERNATIONAL PRODUCT PRICES	51.927	53.433	44.631	44.862	41.912
- MOVEMENT IN EXCHANGE RATE	15.155	14.765	14.576	14.696	14.578
AVERAGE UNIT OVER/(UNDER) RECOVERY 02/06/2017 - 29/06/2017	67.082	68.198	59.207	59.558	56.490

R/\$ EXCHANGE RATE - (R/\$ 12.9600 - 29/06/2017)

### EXCHANGE RATE USED IN BASIC FUEL PRICE



### INTERNATIONAL PRODUCT PRICES OF BASKET USED IN BASIC FUEL PRICE



### BASIC FUEL PRICE IN SA CENTS PER LITRE

