

UPDATE OF THE BASIC FUEL PRICE

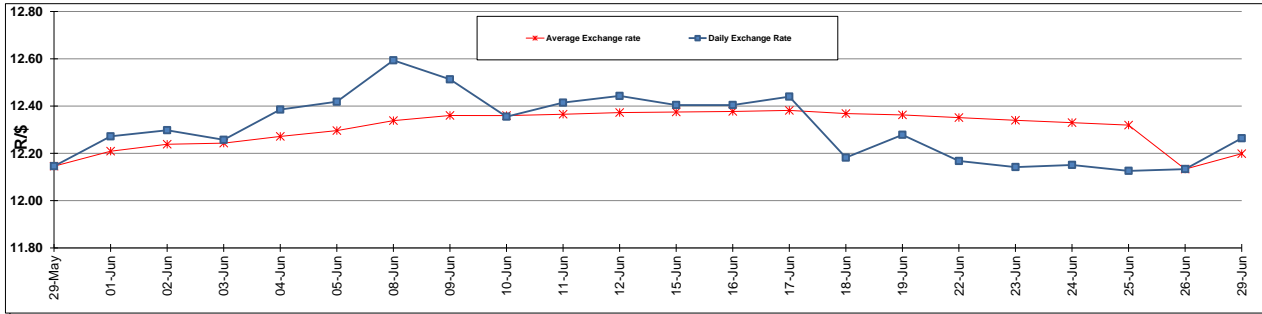
	PETROL 95 ULP	PETROL 93 ULP & LRP	DIESEL 0.05%	DIESEL 0.005%	ILL. PAR.
GAUTENG PUMP PRICE (SA c/l) AS FROM 01/07/2015	1,377.000	1,352.000	-	-	-
WHOLESALE PRICE (SA c/l) AS FROM 01/07/2015	-	-	1,170.790	1,174.190	786.828
SINGLE NATIONAL MAXIMUM RETAIL PRICE	-	-	-	-	1,014.000
BASIC FUEL PRICE - 29/06/2015 (SA c/l)	665.815	650.215	604.689	611.387	596.807
PRESS RELEASE CONTRIBUTION TO BFP 26/06/2015 - 29/06/2015 (SA c/l)	662.650	644.650	638.630	642.030	623.128
UNIT OVER/(UNDER) RECOVERY (SA c/l) - 29/06/2015	(3.165)	(5.565)	33.941	30.643	26.321
AVERAGE BASIC FUEL PRICE 26/06/2015 - 29/06/2015	666.085	650.569	607.188	613.728	599.158
AVERAGE UNIT OVER/(UNDER) RECOVERY 26/06/2015 - 29/06/2015	(3.435)	(5.919)	31.442	28.303	23.970

ANALYSIS MOVEMENT OF AVERAGE OVER/(UNDER) RECOVERY

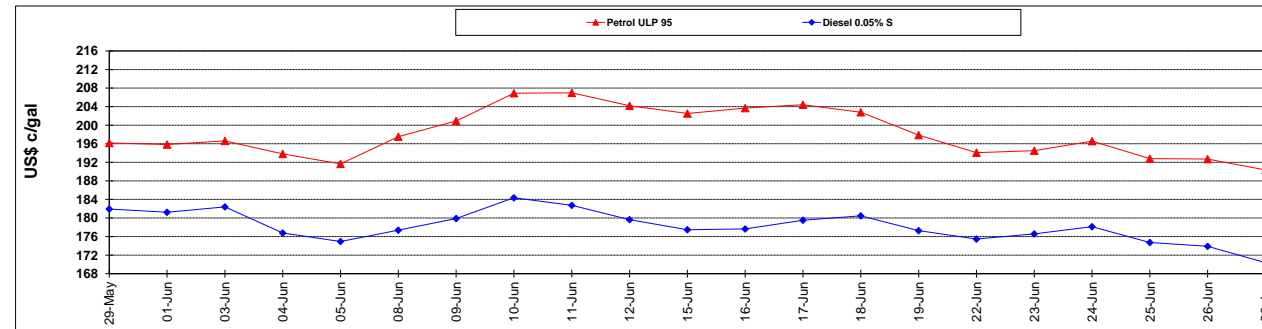
	PETROL 95	PETROL 93	DIESEL 0.05%	DIESEL 0.005%	ILL. PAR.
- MOVEMENT IN INTERNATIONAL PRODUCT PRICES	(10.036)	(12.367)	25.424	22.219	18.032
- MOVEMENT IN EXCHANGE RATE	6.601	6.448	6.018	6.083	5.938
AVERAGE UNIT OVER/(UNDER) RECOVERY 26/06/2015 - 29/06/2015	(3.435)	(5.919)	31.442	28.303	23.970

R/\$ EXCHANGE RATE - (R/\$ 12.2639 - 29/06/2015)

EXCHANGE RATE USED IN BASIC FUEL PRICE



INTERNATIONAL PRODUCT PRICES OF BASKET USED IN BASIC FUEL PRICE



BASIC FUEL PRICE IN SA CENTS PER LITRE

