

UPDATE OF THE BASIC FUEL PRICE

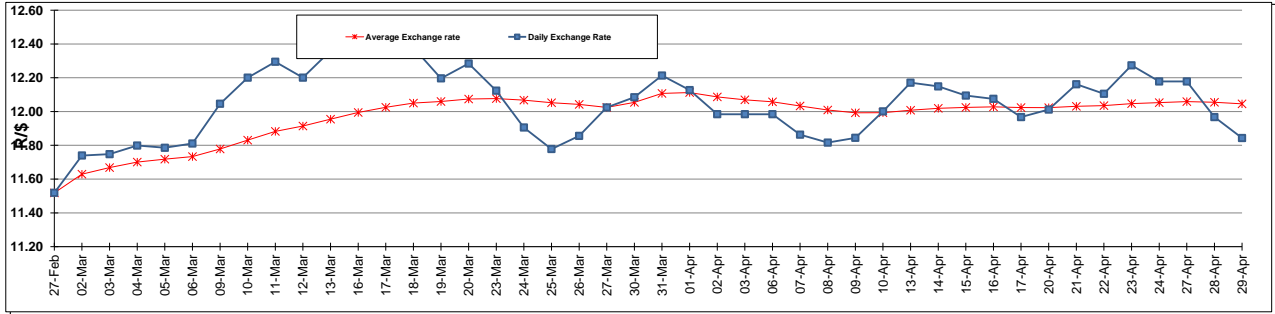
	PETROL 95 ULP	PETROL 93 ULP & LRP	DIESEL 0.05%	DIESEL 0.005%	ILL. PAR.
GAUTENG PUMP PRICE (SA c/l) AS FROM 03/04/2015	1,289.000	1,261.000	-	-	-
WHOLESALE PRICE (SA c/l) AS FROM 03/04/2015	-	-	1,122.790	1,129.190	743.828
SINGLE NATIONAL MAXIMUM RETAIL PRICE	-	-	-	-	957.000
BASIC FUEL PRICE - 29/04/2015 (SA c/l)	642.894	629.371	613.235	617.874	600.090
PRESS RELEASE CONTRIBUTION TO BFP 01/04/2015 - 29/04/2015 (SA c/l)	615.650	597.650	594.630	601.030	586.128
UNIT OVER/(UNDER) RECOVERY (SA c/l) - 29/04/2015	(27.244)	(31.721)	(18.605)	(16.844)	(13.962)
AVERAGE BASIC FUEL PRICE 27/03/2015 - 29/04/2015	606.077	592.828	584.794	591.224	578.035
AVERAGE UNIT OVER/(UNDER) RECOVERY 27/03/2015 - 29/04/2015	(0.352)	(4.353)	4.836	4.556	5.343

ANALYSIS MOVEMENT OF AVERAGE OVER/(UNDER) RECOVERY

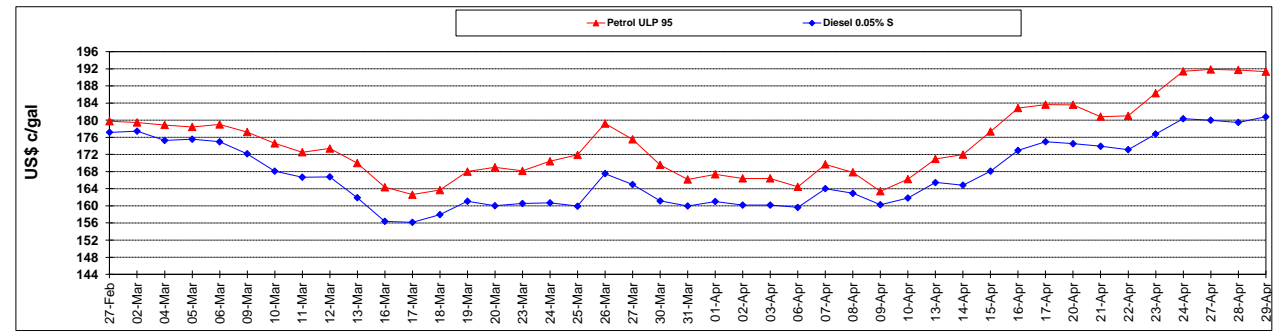
	PETROL 95	PETROL 93	DIESEL 0.05%	DIESEL 0.005%	ILL. PAR.
- MOVEMENT IN INTERNATIONAL PRODUCT PRICES	(0.171)	(4.176)	5.011	4.733	5.516
- MOVEMENT IN EXCHANGE RATE	(0.181)	(0.177)	(0.175)	(0.177)	(0.173)
AVERAGE UNIT OVER/(UNDER) RECOVERY 27/03/2015 - 29/04/2015	(0.352)	(4.353)	4.836	4.556	5.343

R/\$ EXCHANGE RATE - (R/\$ 11.8432 - 29/04/2015)

EXCHANGE RATE USED IN BASIC FUEL PRICE



INTERNATIONAL PRODUCT PRICES OF BASKET USED IN BASIC FUEL PRICE



BASIC FUEL PRICE IN SA CENTS PER LITRE

