

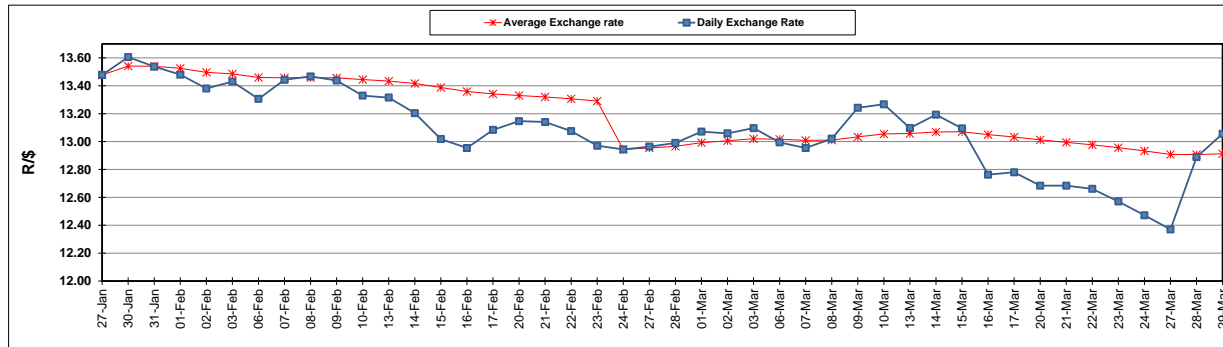
	PETROL 95 ULP	PETROL 93 ULP & LRP	DIESEL 0.05%	DIESEL 0.005%	ILL. PAR.
GAUTENG PUMP PRICE (SA c/l) AS FROM 01/03/2017	1 354.000	1 330.000	-	-	-
WHOLESALE PRICE (SA c/l) AS FROM 01/03/2017	-	-	1 160.830	1 163.230	750.588
SINGLE NATIONAL MAXIMUM RETAIL PRICE	-	-	-	-	966.000
BASIC FUEL PRICE - 29/03/2017 (SA c/l)	561.061	545.761	533.505	536.922	531.204
PRESS RELEASE CONTRIBUTION TO BFP 01/03/2017 - 29/03/2017 (SA c/l)	612.870	598.870	588.630	591.030	583.128
UNIT OVER/(UNDER) RECOVERY (SA c/l) - 29/03/2017	51.809	53.109	55.125	54.108	51.924
AVERAGE BASIC FUEL PRICE 24/02/2017 - 29/03/2017	549.808	537.474	539.314	542.255	532.603
AVERAGE UNIT OVER/(UNDER) RECOVERY 24/02/2017- 29/03/2017	64.062	62.396	49.566	49.025	51.525

ANALYSIS MOVEMENT OF AVERAGE OVER/(UNDER) RECOVERY

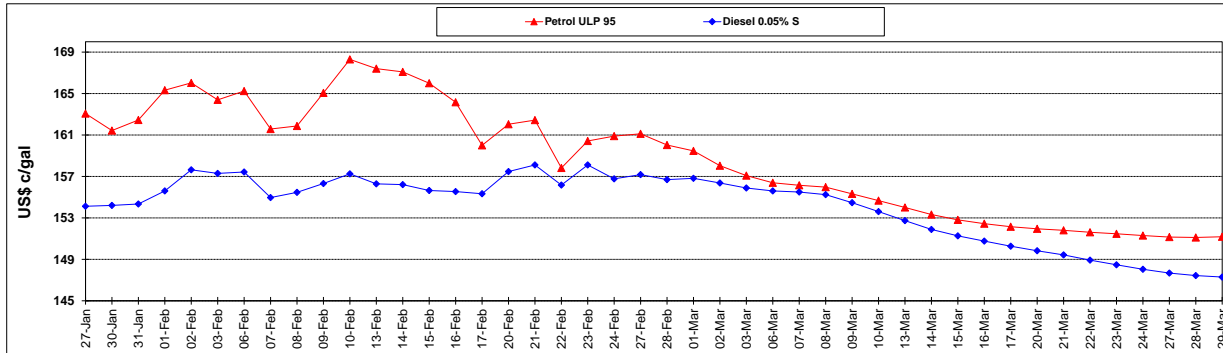
	PETROL 95	PETROL 93	DIESEL 0.05%	DIESEL 0.005%	ILL. PAR.
- MOVEMENT IN INTERNATIONAL PRODUCT PRICES	61.635	60.024	47.185	46.631	49.174
- MOVEMENT IN EXCHANGE RATE	2.427	2.372	2.381	2.394	2.351
AVERAGE UNIT OVER/(UNDER) RECOVERY 24/02/2017 - 29/03/2017	64.062	62.396	49.566	49.025	51.525

R/\$ EXCHANGE RATE - (R/\$ 13.0560 - 29/03/2017)

EXCHANGE RATE USED IN BASIC FUEL PRICE



INTERNATIONAL PRODUCT PRICES OF BASKET USED IN BASIC FUEL PRICE



BASIC FUEL PRICE IN SA CENTS PER LITRE

