

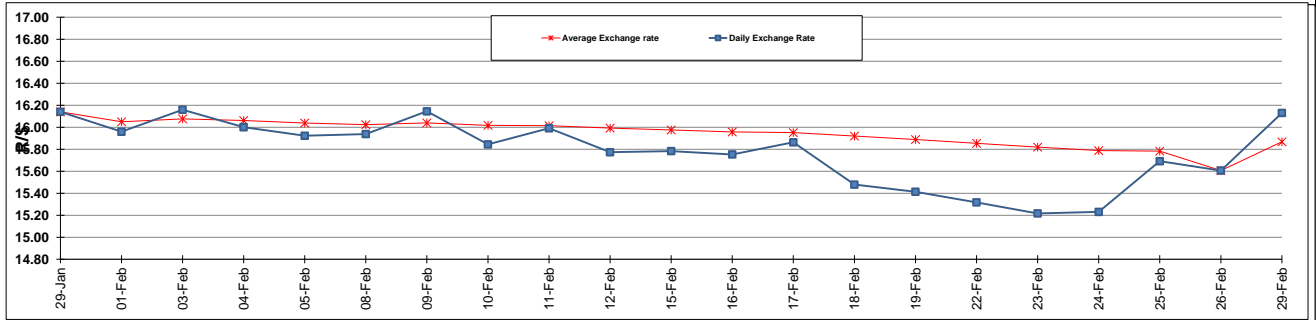
| | PETROL 95 ULP | PETROL 93 ULP & LRP | DIESEL 0.05% | DIESEL 0.005% | ILL. PAR. |
|--|------------------|------------------------|-----------------|------------------|-----------|
| GAUTENG PUMP PRICE (SA c/l) AS FROM 02/03/2016 | 1 174.000 | 1 146.000 | - | - | - |
| WHOLESALE PRICE (SA c/l) AS FROM 02/03/2016 | - | - | 958.170 | 961.570 | 605.028 |
| SINGLE NATIONAL MAXIMUM RETAIL PRICE | - | - | - | - | 772.000 |
| BASIC FUEL PRICE - 29/02/2016 (SA c/l) | 515.165 | 492.191 | 469.328 | 472.863 | 487.513 |
| PRESS RELEASE CONTRIBUTION TO BFP 26/02/2016 - 29/02/2016 (SA c/l) | 556.970 | 538.970 | 412.630 | 417.030 | 428.128 |
| UNIT OVER/(UNDER) RECOVERY (SA c/l) - 29/02/2016 | 41.805 | 46.779 | (56.698) | (55.833) | (59.385) |
| AVERAGE BASIC FUEL PRICE 29/02/2016 - 29/02/2016 | 512.581 | 489.979 | 462.120 | 465.669 | 479.836 |
| AVERAGE UNIT OVER/(UNDER) RECOVERY 26/02/2016 - 29/02/2016 | 44.389 | 48.991 | (49.490) | (48.639) | (51.708) |

ANALYSIS MOVEMENT OF AVERAGE OVER/(UNDER) RECOVERY

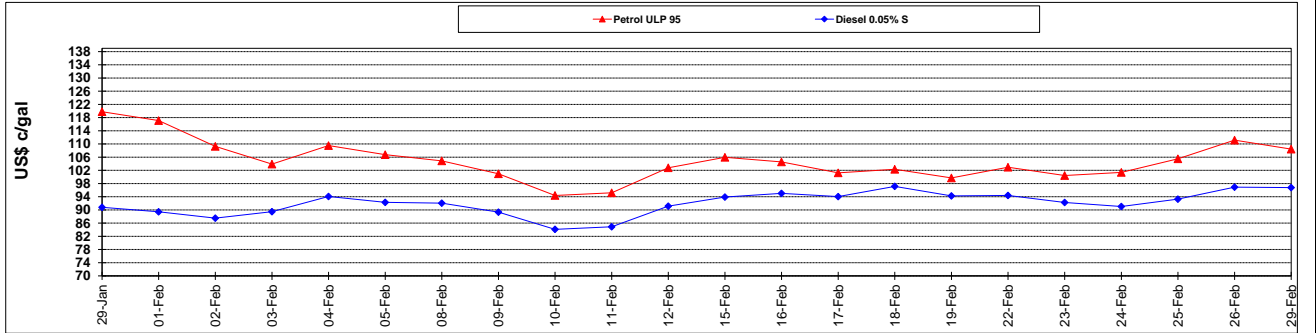
| | PETROL 95 | PETROL 93 | DIESEL 0.05% | DIESEL 0.005% | ILL. PAR. |
|--|-----------|-----------|--------------|---------------|-----------|
| - MOVEMENT IN INTERNATIONAL PRODUCT PRICES | 47.125 | 51.606 | (47.023) | (46.153) | (49.147) |
| - MOVEMENT IN EXCHANGE RATE | (2.736) | (2.615) | (2.467) | (2.486) | (2.561) |
| AVERAGE UNIT OVER/(UNDER) RECOVERY 26/02/2016 - 29/02/2016 | 44.389 | 48.991 | (49.490) | (48.639) | (51.708) |

R/\$ EXCHANGE RATE - (R/\$ 16.1295 - 29/02/2016)

EXCHANGE RATE USED IN BASIC FUEL PRICE



INTERNATIONAL PRODUCT PRICES OF BASKET USED IN BASIC FUEL PRICE



BASIC FUEL PRICE IN SA CENTS PER LITRE

