

UPDATE OF THE BASIC FUEL PRICE

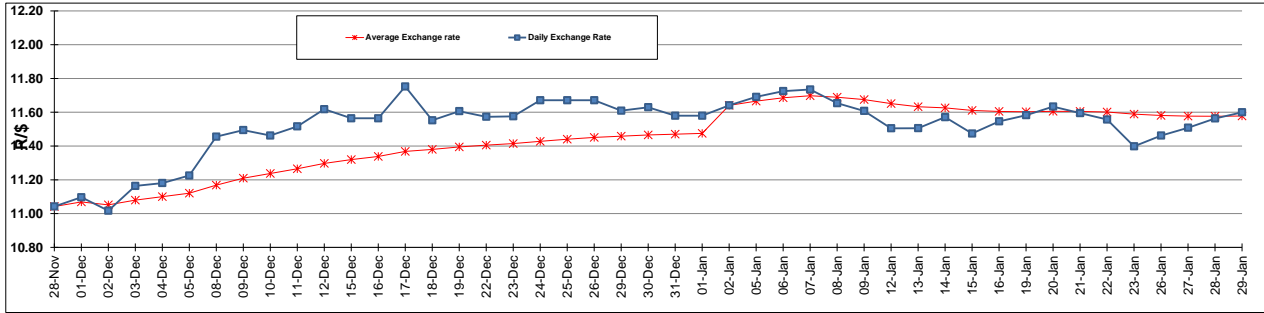
	PETROL 95 ULP	PETROL 93 ULP & LRP	DIESEL 0.05%	DIESEL 0.005%	ILL. PAR.
GAUTENG PUMP PRICE (SA c/l) AS FROM 07/01/2015	1,124.000	1,102.000	-	-	-
WHOLESALE PRICE (SA c/l) AS FROM 07/01/2015	-	-	1,028.090	1,032.490	747.928
SINGLE NATIONAL MAXIMUM RETAIL PRICE	-	-	-	-	969.000
BASIC FUEL PRICE - 29/01/2015 (SA c/l)	464.969	450.754	487.428	491.865	505.628
PRESS RELEASE CONTRIBUTION TO BFP 07/01/2015 - 29/01/2015 (SA c/l)	533.250	521.250	582.630	587.030	593.128
UNIT OVER/(UNDER) RECOVERY (SA c/l) - 29/01/2015	68.281	70.496	95.202	95.165	87.500
AVERAGE BASIC FUEL PRICE 02/01/2015 - 29/01/2015	459.529	446.228	496.576	500.795	506.602
AVERAGE UNIT OVER/(UNDER) RECOVERY 02/01/2015 - 29/01/2015	92.171	94.072	101.655	101.985	102.726

ANALYSIS MOVEMENT OF AVERAGE OVER/(UNDER) RECOVERY

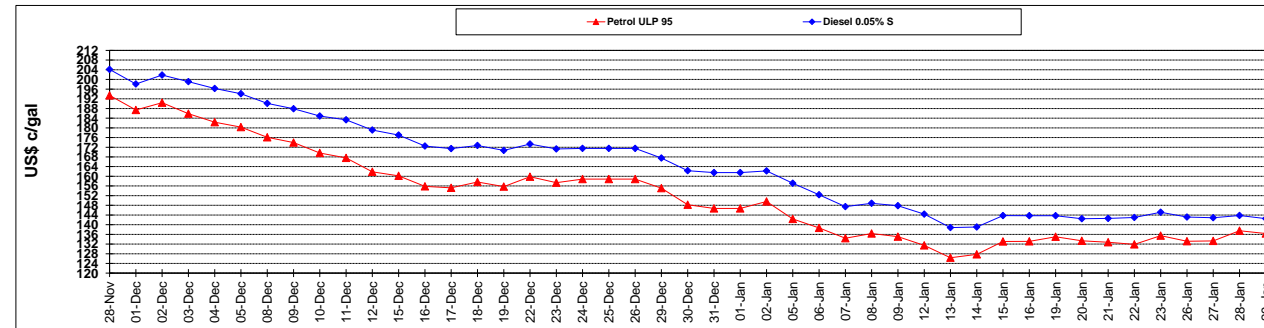
	PETROL 95	PETROL 93	DIESEL 0.05%	DIESEL 0.005%	ILL. PAR.
- MOVEMENT IN INTERNATIONAL PRODUCT PRICES	96.251	98.034	106.063	106.432	107.224
- MOVEMENT IN EXCHANGE RATE	(4.080)	(3.962)	(4.409)	(4.447)	(4.498)
AVERAGE UNIT OVER/(UNDER) RECOVERY 02/01/2015 - 29/01/2015	92.171	94.072	101.655	101.985	102.726

R/\$ EXCHANGE RATE - (R/\$ 11.5997 - 29/01/2015)

EXCHANGE RATE USED IN BASIC FUEL PRICE



INTERNATIONAL PRODUCT PRICES OF BASKET USED IN BASIC FUEL PRICE



BASIC FUEL PRICE IN SA CENTS PER LITRE

