

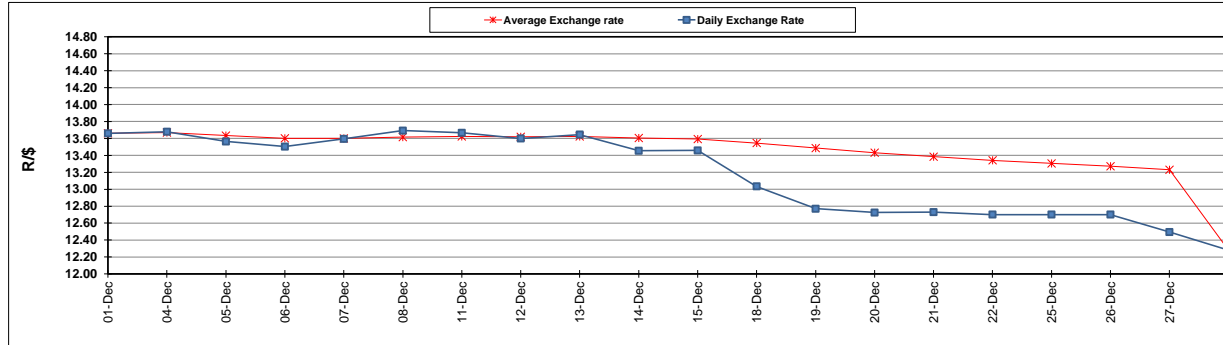
	PETROL 95 ULP	PETROL 93 ULP & LRP	DIESEL 0.05%	DIESEL 0.005%	ILL. PAR.
GAUTENG PUMP PRICE (SA c/l) AS FROM 03/01/2018	1 442.000	1 420.000	-	-	-
WHOLESALE PRICE (SA c/l) AS FROM 03/01/2018	-	-	1 273.630	1 276.030	837.388
SINGLE NATIONAL MAXIMUM RETAIL PRICE	-	-	-	-	1 082.000
BASIC FUEL PRICE - 28/12/2017 (SA c/l)	613.923	603.254	632.761	635.279	635.875
PRESS RELEASE CONTRIBUTION TO BFP 28/12/2017 - 28/12/2017 (SA c/l)	686.170	669.170	684.630	691.030	695.128
UNIT OVER/(UNDER) RECOVERY - 28/12/2017 (SA c/l)	72.247	65.916	51.869	55.751	59.253
AVERAGE BASIC FUEL PRICE 28/12/2017 - 28/12/2017	613.923	603.254	632.761	635.279	635.875
AVERAGE UNIT OVER/(UNDER) RECOVERY 28/12/2017 - 28/12/2017	72.247	65.916	51.869	55.751	59.253

### ANALYSIS MOVEMENT OF AVERAGE OVER/(UNDER) RECOVERY

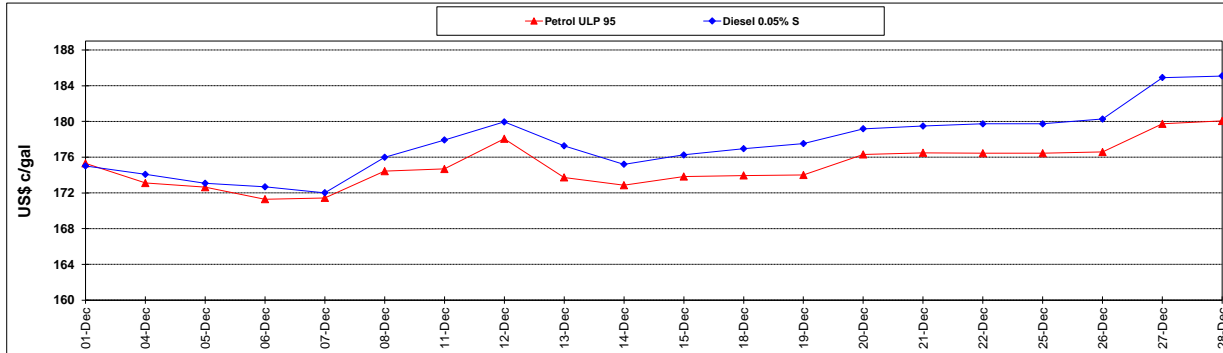
	PETROL 95	PETROL 93	DIESEL 0.05%	DIESEL 0.005%	ILL. PAR.
- MOVEMENT IN INTERNATIONAL PRODUCT PRICES	24.862	19.354	3.030	6.717	10.173
- MOVEMENT IN EXCHANGE RATE	47.385	46.562	48.839	49.034	49.080
AVERAGE UNIT OVER/(UNDER) RECOVERY 28/12/2017 - 28/12/2017	72.247	65.916	51.869	55.751	59.253

R/\$ EXCHANGE RATE - (R/\$ 12.2823 - 28/12/2017)

### EXCHANGE RATE USED IN BASIC FUEL PRICE



### INTERNATIONAL PRODUCT PRICES OF BASKET USED IN BASIC FUEL PRICE



### BASIC FUEL PRICE IN SA CENTS PER LITRE

