

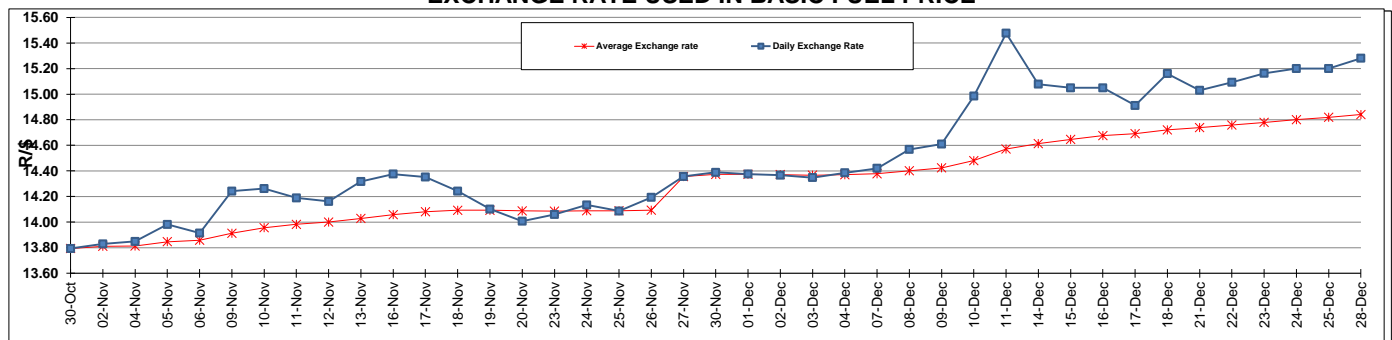
	PETROL 95 ULP	PETROL 93 ULP & LRP	DIESEL 0.05%	DIESEL 0.005%	ILL. PAR.
GAUTENG PUMP PRICE (SA c/l) AS FROM 02/12/2015	1 240.000	1 209.000	-	-	-
WHOLESALE PRICE (SA c/l) AS FROM 02/12/2015	-	-	1 081.170	1 088.570	710.028
SINGLE NATIONAL MAXIMUM RETAIL PRICE	-	-	-	-	912.000
BASIC FUEL PRICE - 28/12/2015 (SA c/l)	556.549	536.656	453.611	459.197	470.030
PRESS RELEASE CONTRIBUTION TO BFP 02/12/2015 - 28/12/2015 (SA c/l)	553.970	532.970	550.630	558.030	550.128
UNIT OVER/(UNDER) RECOVERY (SA c/l) - 28/12/2015	(2.579)	(3.686)	97.019	98.833	80.098
AVERAGE BASIC FUEL PRICE 27/11/2015 - 28/12/2015	551.908	534.467	478.018	483.125	489.179
AVERAGE UNIT OVER/(UNDER) RECOVERY 27/11/2015 - 28/12/2015	3.003	(0.556)	73.430	75.451	61.221

### ANALYSIS MOVEMENT OF AVERAGE OVER/(UNDER) RECOVERY

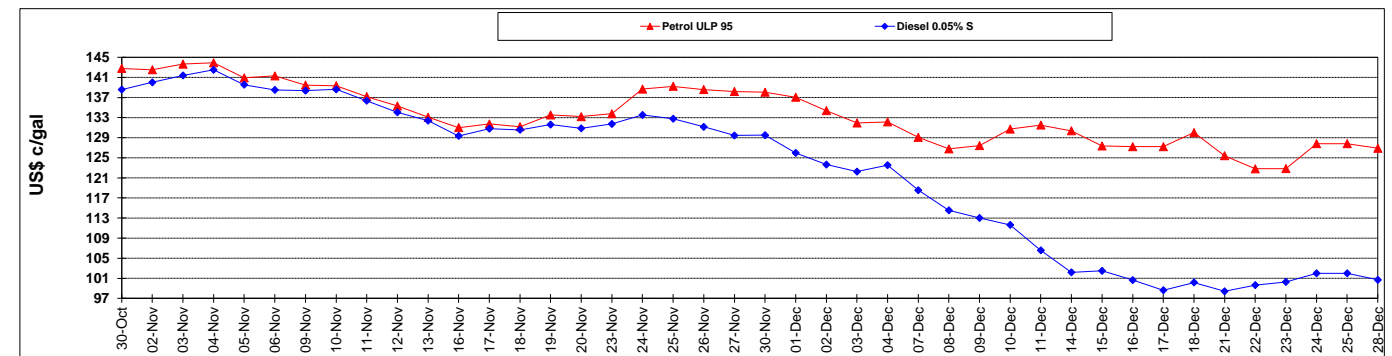
	PETROL 95	PETROL 93	DIESEL 0.05%	DIESEL 0.005%	ILL. PAR.
- MOVEMENT IN INTERNATIONAL PRODUCT PRICES	30.786	26.349	97.494	99.771	85.848
- MOVEMENT IN EXCHANGE RATE	(27.783)	(26.905)	(24.064)	(24.321)	(24.626)
AVERAGE UNIT OVER/(UNDER) RECOVERY 27/11/2015 - 28/12/2015	3.003	(0.556)	73.430	75.451	61.221

### R/\$ EXCHANGE RATE - (R/\$ 15.2810 - 28/12/2015)

#### EXCHANGE RATE USED IN BASIC FUEL PRICE



#### INTERNATIONAL PRODUCT PRICES OF BASKET USED IN BASIC FUEL PRICE



#### BASIC FUEL PRICE IN SA CENTS PER LITRE

