

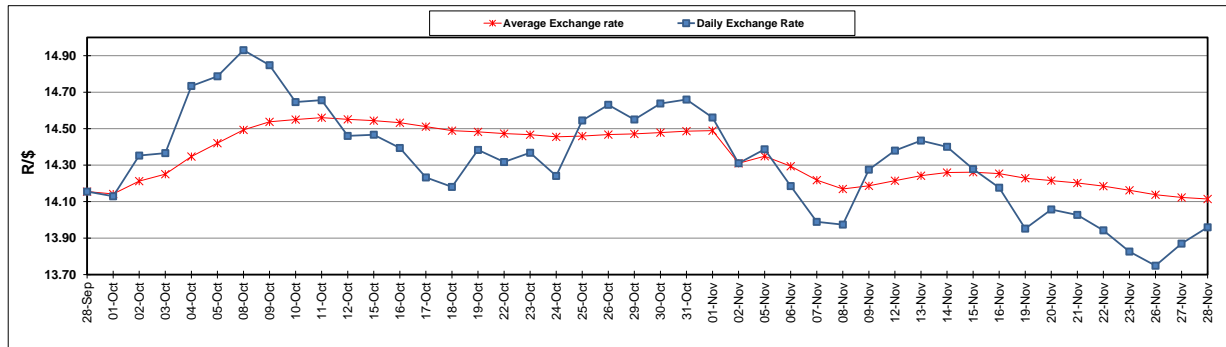
	PETROL 95 ULP	PETROL 93 ULP & LRP	DIESEL 0.05%	DIESEL 0.005%	ILL. PAR.
GAUTENG PUMP PRICE (SA c/l) AS FROM 07/11/2018	1 708.000	1 685.000	-	-	-
WHOLESALE PRICE (SA c/l) AS FROM 07/11/2018	-	-	1 612.750	1 620.150	1 085.088
SINGLE NATIONAL MAXIMUM RETAIL PRICE	-	-	-	-	1 409.000
BASIC FUEL PRICE - 28/11/2018 (SA c/l)	573.761	563.990	679.209	684.018	696.449
PRESS RELEASE CONTRIBUTION TO BFP 07/11/2018 - 28/11/2018 (SA c/l)	829.250	816.250	917.630	925.030	912.128
UNIT OVER/(UNDER) RECOVERY - 28/11/2018 (SA c/l)	255.489	252.260	238.421	241.012	215.679
AVERAGE BASIC FUEL PRICE 02/11/2018 - 28/11/2018	644.020	633.803	768.589	774.340	775.195
AVERAGE UNIT OVER/(UNDER) RECOVERY 02/11/2018 - 28/11/2018	188.691	185.909	144.935	146.111	132.512

ANALYSIS MOVEMENT OF AVERAGE OVER/(UNDER) RECOVERY

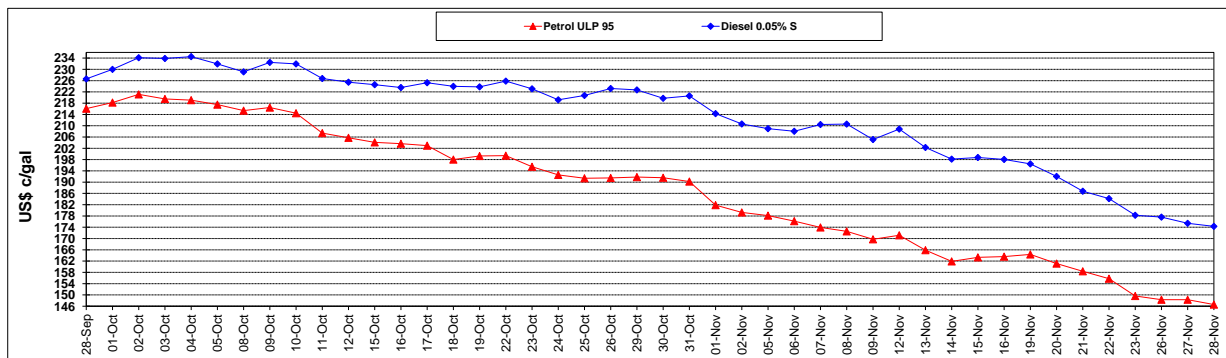
	PETROL 95	PETROL 93	DIESEL 0.05%	DIESEL 0.005%	ILL. PAR.
- MOVEMENT IN INTERNATIONAL PRODUCT PRICES	171.589	169.078	124.527	125.549	111.927
- MOVEMENT IN EXCHANGE RATE	17.102	16.830	20.409	20.562	20.585
AVERAGE UNIT OVER/(UNDER) RECOVERY 02/11/2018 - 28/11/2018	188.691	185.909	144.935	146.111	132.512

R/\$ EXCHANGE RATE - (R/\$13.9593 - 28/11/2018)

EXCHANGE RATE USED IN BASIC FUEL PRICE



INTERNATIONAL PRODUCT PRICES OF BASKET USED IN BASIC FUEL PRICE



BASIC FUEL PRICE IN SA CENTS PER LITRE

