

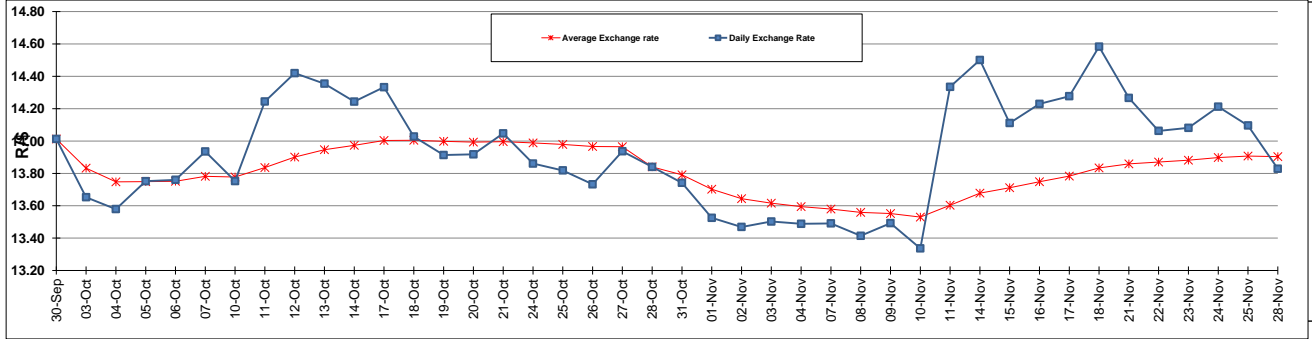
	PETROL 95 ULP	PETROL 93 ULP & LRP	DIESEL 0.05%	DIESEL 0.005%	ILL. PAR.
GAUTENG PUMP PRICE (SA c/l) AS FROM 02/11/2016	1 305.000	1 279.000	-	-	-
WHOLESALE PRICE (SA c/l) AS FROM 02/11/2016	-	-	1 134.870	1 138.270	726.628
SINGLE NATIONAL MAXIMUM RETAIL PRICE	-	-	-	-	934.000
BASIC FUEL PRICE - 28/11/2016 (SA c/l)	535.049	521.286	515.061	519.686	522.791
PRESS RELEASE CONTRIBUTION TO BFP 02/11/2016 - 28/11/2016 (SA c/l)	583.970	567.970	568.630	572.030	565.128
UNIT OVER/(UNDER) RECOVERY (SA c/l) - 28/11/2016	48.921	46.684	53.569	52.344	42.337
AVERAGE BASIC FUEL PRICE 28/10/2016 - 28/11/2016	536.593	521.797	521.716	525.939	521.357
AVERAGE UNIT OVER/(UNDER) RECOVERY 28/10/2016 - 28/11/2016	41.241	40.037	38.324	37.500	35.998

ANALYSIS MOVEMENT OF AVERAGE OVER/(UNDER) RECOVERY

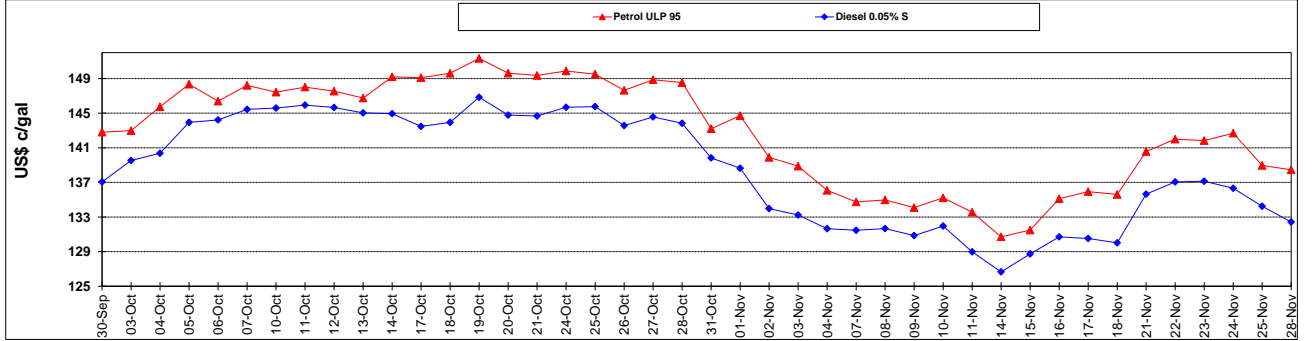
	PETROL 95	PETROL 93	DIESEL 0.05%	DIESEL 0.005%	ILL. PAR.
- MOVEMENT IN INTERNATIONAL PRODUCT PRICES	38.895	37.755	36.042	35.200	33.718
- MOVEMENT IN EXCHANGE RATE	2.346	2.282	2.281	2.300	2.280
AVERAGE UNIT OVER/(UNDER) RECOVERY 28/10/2016 - 28/11/2016	41.241	40.037	38.324	37.500	35.998

R/\$ EXCHANGE RATE - (R/\$ 13.8285 - 28/11/2016)

EXCHANGE RATE USED IN BASIC FUEL PRICE



INTERNATIONAL PRODUCT PRICES OF BASKET USED IN BASIC FUEL PRICE



BASIC FUEL PRICE IN SA CENTS PER LITRE

