

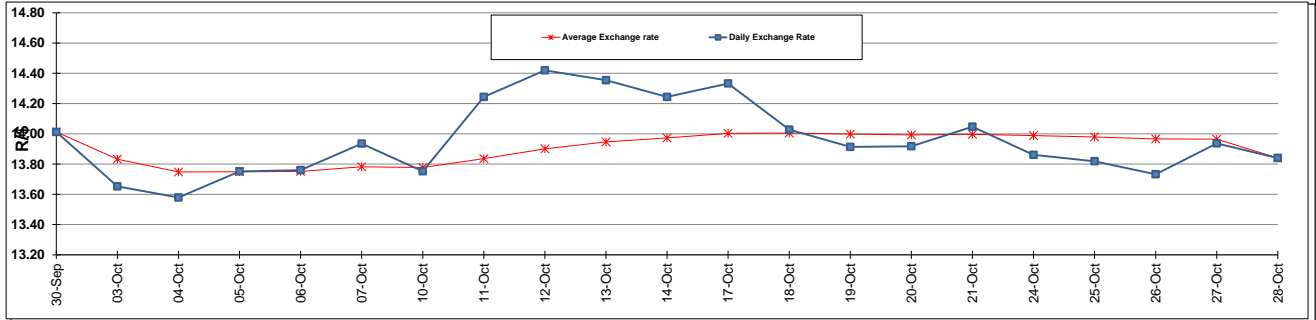
	PETROL 95 ULP	PETROL 93 ULP & LRP	DIESEL 0.05%	DIESEL 0.005%	ILL. PAR.
GAUTENG PUMP PRICE (SA c/l) AS FROM 02/11/2016	1 305.000	1 279.000	-	-	-
WHOLESALE PRICE (SA c/l) AS FROM 02/11/2016	-	-	1 134.870	1 138.270	726.628
SINGLE NATIONAL MAXIMUM RETAIL PRICE	-	-	-	-	934.000
BASIC FUEL PRICE - 28/10/2016 (SA c/l)	574.892	555.400	560.069	564.656	555.725
PRESS RELEASE CONTRIBUTION TO BFP 28/10/2016 - 28/10/2016 (SA c/l)	538.970	522.970	505.630	509.030	508.128
UNIT OVER/(UNDER) RECOVERY (SA c/l) - 28/10/2016	(35.922)	(32.430)	(54.439)	(55.626)	(47.597)
AVERAGE BASIC FUEL PRICE 28/10/2016 - 28/10/2016	574.892	555.400	560.069	564.656	555.725
AVERAGE UNIT OVER/(UNDER) RECOVERY 28/10/2016 - 28/10/2016	(35.922)	(32.430)	(54.439)	(55.626)	(47.597)

### ANALYSIS MOVEMENT OF AVERAGE OVER/(UNDER) RECOVERY

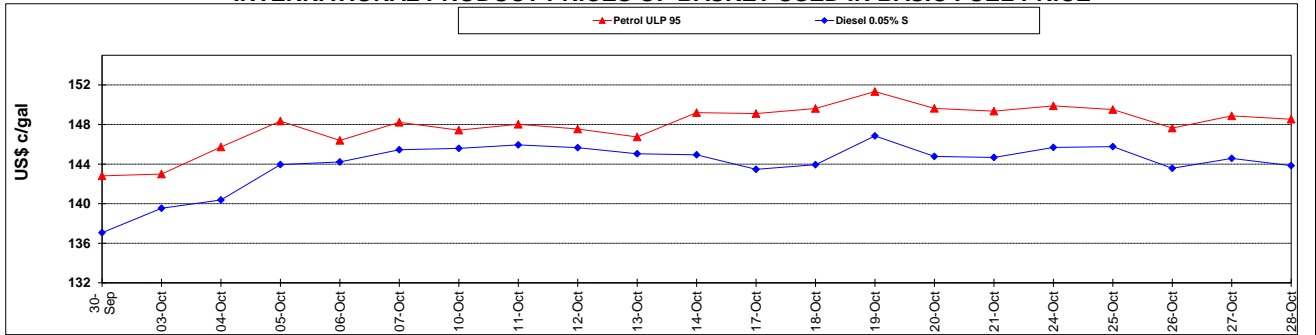
	PETROL 95	PETROL 93	DIESEL 0.05%	DIESEL 0.005%	ILL. PAR.
- MOVEMENT IN INTERNATIONAL PRODUCT PRICES	(41.098)	(37.430)	(59.481)	(60.710)	(52.600)
- MOVEMENT IN EXCHANGE RATE	5.176	5.000	5.042	5.084	5.003
AVERAGE UNIT OVER/(UNDER) RECOVERY 28/10/2016 - 28/10/2016	(35.922)	(32.430)	(54.439)	(55.626)	(47.597)

**R/\$ EXCHANGE RATE - (R/\$ 13.8400- 28/10/2016)**

### EXCHANGE RATE USED IN BASIC FUEL PRICE



### INTERNATIONAL PRODUCT PRICES OF BASKET USED IN BASIC FUEL PRICE



### BASIC FUEL PRICE IN SA CENTS PER LITRE

