

## UPDATE OF THE BASIC FUEL PRICE

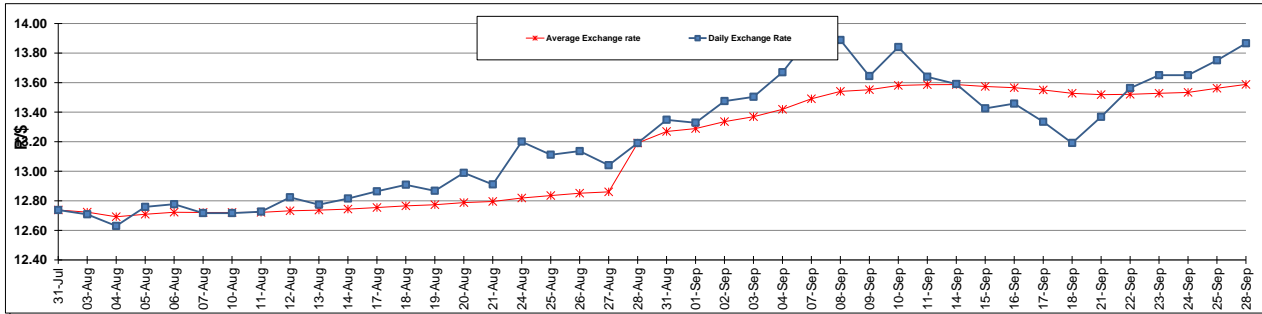
	PETROL 95 ULP	PETROL 93 ULP & LRP	DIESEL 0.05%	DIESEL 0.005%	ILL. PAR.
GAUTENG PUMP PRICE (SA c/l) AS FROM 02/09/2015	1,257.000	1,232.000	-	-	-
WHOLESALE PRICE (SA c/l) AS FROM 02/09/2015	-	-	1,040.970	1,049.370	661.828
SINGLE NATIONAL MAXIMUM RETAIL PRICE	-	-	-	-	847.000
BASIC FUEL PRICE - 28/09/2015 (SA c/l)	594.601	574.455	573.272	578.283	559.151
PRESS RELEASE CONTRIBUTION TO BFP 02/09/2015 - 28/09/2015 (SA c/l)	578.870	563.870	512.630	521.030	504.128
UNIT OVER/(UNDER) RECOVERY (SA c/l) - 28/09/2015	(15.731)	(10.585)	(60.642)	(57.253)	(55.023)
AVERAGE BASIC FUEL PRICE 28/08/2015 - 28/09/2015	592.195	570.777	571.862	578.299	560.255
AVERAGE UNIT OVER/(UNDER) RECOVERY 28/08/2015 - 28/09/2015	(3.288)	3.129	(51.868)	(50.314)	(48.627)

### ANALYSIS MOVEMENT OF AVERAGE OVER/(UNDER) RECOVERY

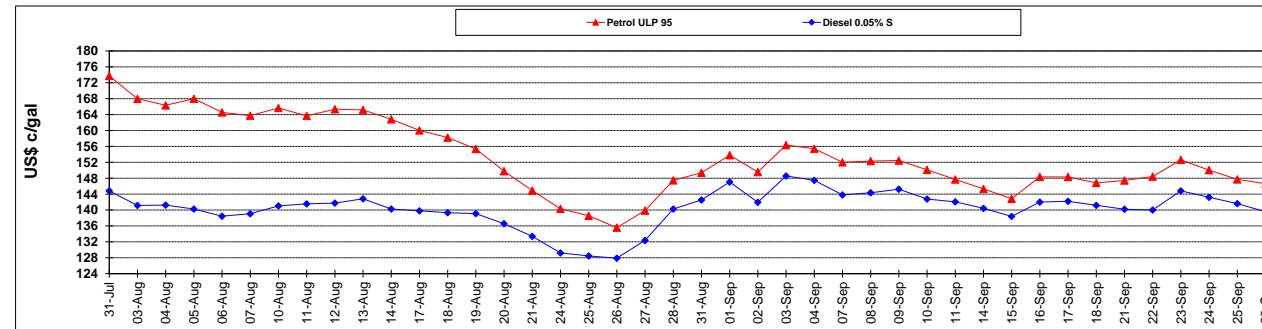
	PETROL 95	PETROL 93	DIESEL 0.05%	DIESEL 0.005%	ILL. PAR.
- MOVEMENT IN INTERNATIONAL PRODUCT PRICES	28.391	33.664	(21.275)	(19.377)	(18.655)
- MOVEMENT IN EXCHANGE RATE	(31.680)	(30.535)	(30.593)	(30.937)	(29.972)
AVERAGE UNIT OVER/(UNDER) RECOVERY 28/08/2015 - 28/09/2015	(3.288)	3.129	(51.868)	(50.314)	(48.627)

**R/\$ EXCHANGE RATE - (R/\$ 13.8660 - 28/09/2015)**

### EXCHANGE RATE USED IN BASIC FUEL PRICE



### INTERNATIONAL PRODUCT PRICES OF BASKET USED IN BASIC FUEL PRICE



### BASIC FUEL PRICE IN SA CENTS PER LITRE

