

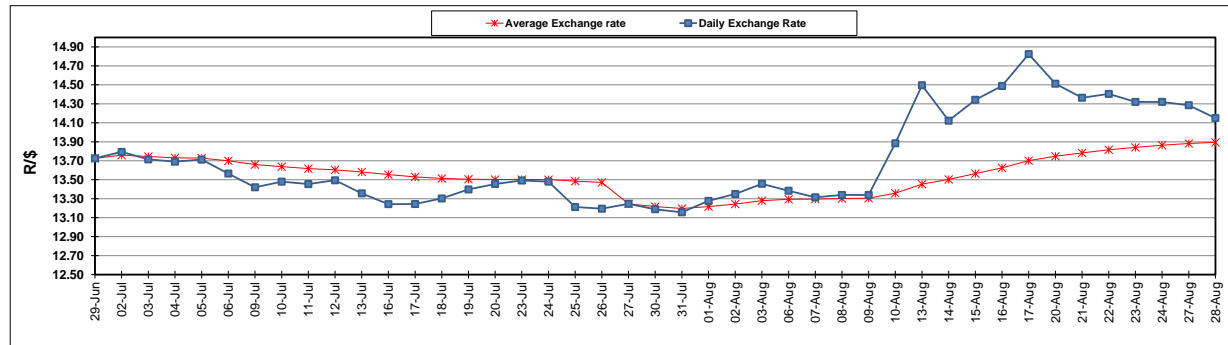
	PETROL 95 ULP	PETROL 93 ULP & LRP	DIESEL 0.05%	DIESEL 0.005%	ILL. PAR.
GAUTENG PUMP PRICE (SA c/l) AS FROM 04/08/2018	1 603.000	1 582.000	-	-	-
WHOLESALE PRICE (SA c/l) AS FROM 04/08/2018	-	-	1 440.830	1 445.230	953.088
SINGLE NATIONAL MAXIMUM RETAIL PRICE	-	-	-	-	1 233.000
BASIC FUEL PRICE - 28/08/2018 (SA c/l)	807.707	792.387	843.629	848.459	835.792
PRESS RELEASE CONTRIBUTION TO BFP 01/08/2018 - 28/08/2018 (SA c/l)	751.070	739.070	767.630	772.030	780.128
UNIT OVER/(UNDER) RECOVERY - 28/08/2018 (SA c/l)	(56.637)	(53.317)	(75.999)	(76.429)	(55.664)
AVERAGE BASIC FUEL PRICE 27/07/2018 - 28/08/2018	774.468	760.286	793.695	798.195	794.552
AVERAGE UNIT OVER/(UNDER) RECOVERY 27/07/2018 - 28/08/2018	(23.528)	(21.347)	(25.543)	(25.644)	(14.946)

ANALYSIS MOVEMENT OF AVERAGE OVER/(UNDER) RECOVERY

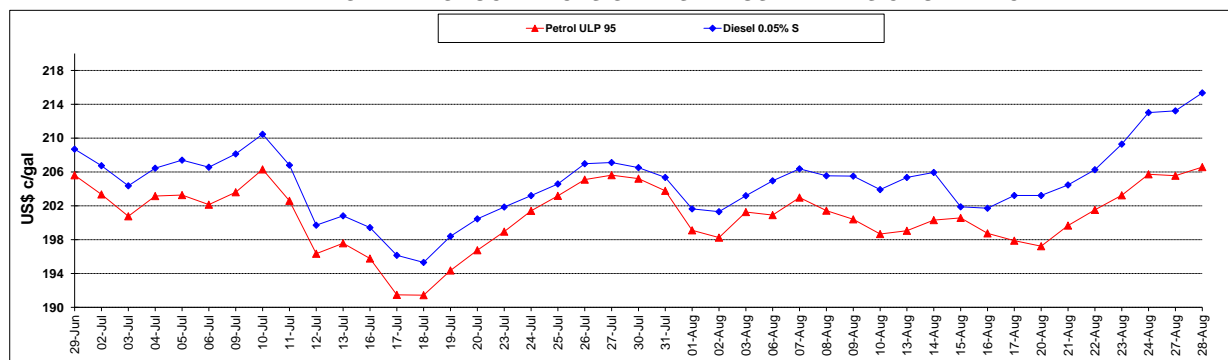
	PETROL 95	PETROL 93	DIESEL 0.05%	DIESEL 0.005%	ILL. PAR.
- MOVEMENT IN INTERNATIONAL PRODUCT PRICES	0.050	1.800	(1.380)	(1.343)	9.243
- MOVEMENT IN EXCHANGE RATE	(23.578)	(23.146)	(24.163)	(24.300)	(24.189)
AVERAGE UNIT OVER/(UNDER) RECOVERY 27/07/2018 - 28/08/2018	(23.528)	(21.347)	(25.543)	(25.644)	(14.946)

R/\$ EXCHANGE RATE - (R/\$14.1500 - 28/08/2018)

EXCHANGE RATE USED IN BASIC FUEL PRICE



INTERNATIONAL PRODUCT PRICES OF BASKET USED IN BASIC FUEL PRICE



BASIC FUEL PRICE IN SA CENTS PER LITRE

