

## UPDATE OF THE BASIC FUEL PRICE

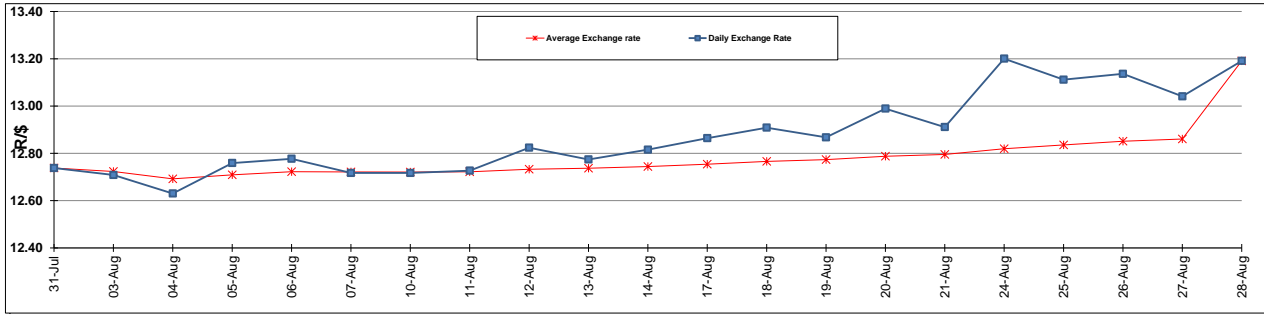
|  | PETROL 95<br>ULP | PETROL 93<br>ULP & LRP | DIESEL<br>0.05% | DIESEL<br>0.005% | ILL. PAR. |
|--|------------------|------------------------|-----------------|------------------|-----------|
| GAUTENG PUMP PRICE (SA c/l) AS FROM 02/09/2015                     | 1,257.000        | 1,232.000              | -               | -                | -         |
| WHOLESALE PRICE (SA c/l) AS FROM 02/09/2015                        | -                | -                      | 1,040.970       | 1,049.370        | 661.828   |
| SINGLE NATIONAL MAXIMUM RETAIL PRICE                               | -                | -                      | -               | -                | 847.000   |
| <br>   |                  |                        |                 |                  |           |
| BASIC FUEL PRICE - 28/08/2015 (SA c/l)                             | 567.526          | 544.126                | 546.506         | 554.111          | 536.218   |
| PRESS RELEASE CONTRIBUTION TO BFP 28/08/2015 - 28/08/2015 (SA c/l) | 652.470          | 637.470                | 566.630         | 572.030          | 559.128   |
| UNIT OVER/(UNDER) RECOVERY (SA c/l) - 28/08/2015                   | 84.944           | 93.344                 | 20.124          | 17.919           | 22.910    |
| AVERAGE BASIC FUEL PRICE 28/08/2015 - 28/08/2015                   | 567.526          | 544.126                | 546.506         | 554.111          | 536.218   |
| AVERAGE UNIT OVER/(UNDER) RECOVERY 28/08/2015 - 28/08/2015         | 84.944           | 93.344                 | 20.124          | 17.919           | 22.910    |

### ANALYSIS MOVEMENT OF AVERAGE OVER/(UNDER) RECOVERY

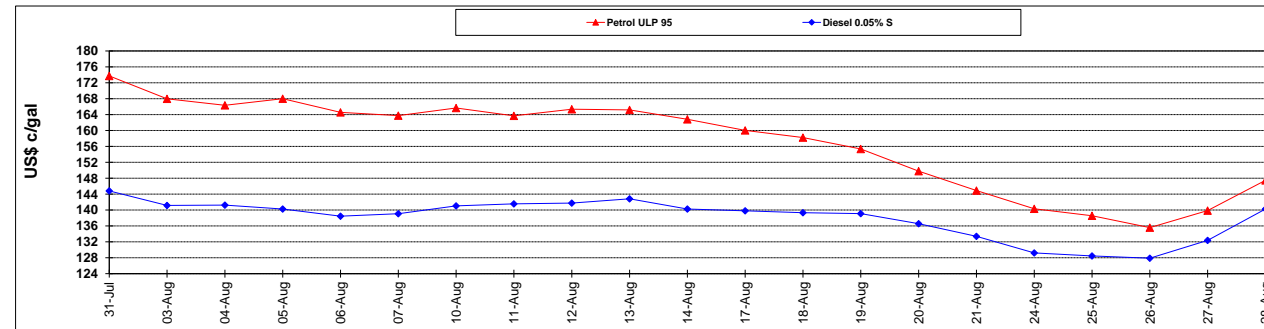
|  | PETROL 95 | PETROL 93 | DIESEL 0.05% | DIESEL 0.005% | ILL. PAR. |
|--|-----------|-----------|--------------|---------------|-----------|
| - MOVEMENT IN INTERNATIONAL PRODUCT PRICES                 | 99.146    | 106.961   | 33.800       | 31.785        | 36.329    |
| - MOVEMENT IN EXCHANGE RATE                                | (14.202)  | (13.617)  | (13.676)     | (13.866)      | (13.419)  |
| AVERAGE UNIT OVER/(UNDER) RECOVERY 28/08/2015 - 28/08/2015 | 84.944    | 93.344    | 20.124       | 17.919        | 22.910    |

**R/\$ EXCHANGE RATE - (R/\$ 13.1910 - 28/08/2015)**

### EXCHANGE RATE USED IN BASIC FUEL PRICE



### INTERNATIONAL PRODUCT PRICES OF BASKET USED IN BASIC FUEL PRICE



### BASIC FUEL PRICE IN SA CENTS PER LITRE

