

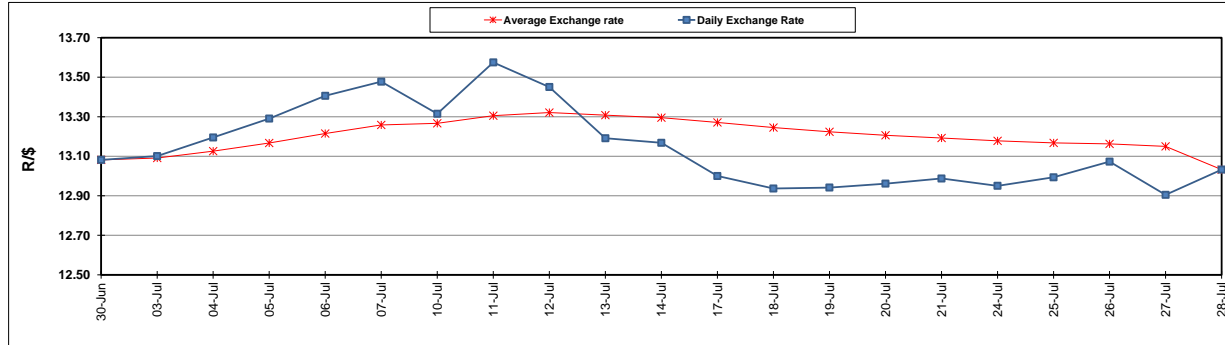
	PETROL 95 ULP	PETROL 93 ULP & LRP	DIESEL 0.05%	DIESEL 0.005%	ILL. PAR.
GAUTENG PUMP PRICE (SA c/l) AS FROM 02/08/2017	1 305.000	1 282.000	-	-	-
WHOLESALE PRICE (SA c/l) AS FROM 02/08/2017	-	-	1 126.330	1 131.730	683.088
SINGLE NATIONAL MAXIMUM RETAIL PRICE	-	-	-	-	876.000
BASIC FUEL PRICE - 28/07/2017 (SA c/l)	563.333	548.668	553.197	559.529	548.979
PRESS RELEASE CONTRIBUTION TO BFP 28/07/2017 - 28/07/2017 (SA c/l)	504.670	491.670	485.630	490.030	486.128
UNIT OVER/(UNDER) RECOVERY (SA c/l) - 28/07/2017	(58.663)	(56.998)	(67.567)	(69.499)	(62.851)
AVERAGE BASIC FUEL PRICE 28/07/2017 - 28/07/2017	563.333	548.668	553.197	559.529	548.979
AVERAGE UNIT OVER/(UNDER) RECOVERY 28/07/2017 - 28/07/2017	(58.663)	(56.998)	(67.567)	(69.499)	(62.851)

### ANALYSIS MOVEMENT OF AVERAGE OVER/(UNDER) RECOVERY

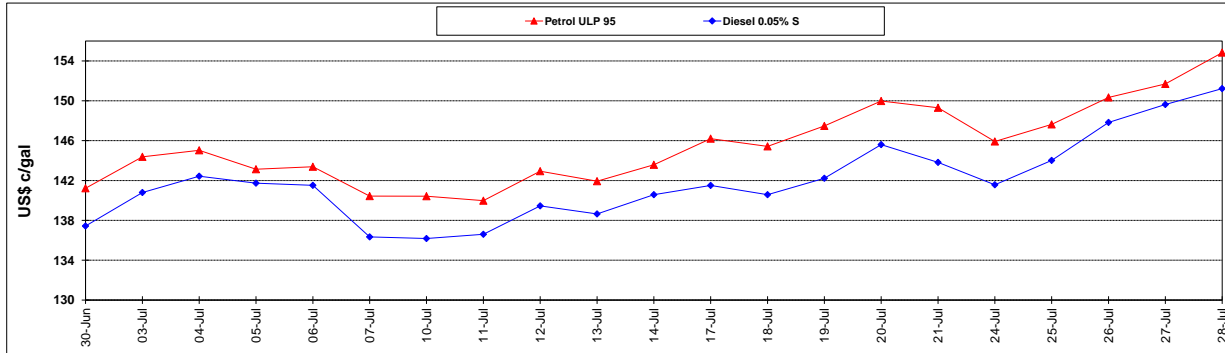
	PETROL 95	PETROL 93	DIESEL 0.05%	DIESEL 0.005%	ILL. PAR.
- MOVEMENT IN INTERNATIONAL PRODUCT PRICES	(63.742)	(61.945)	(72.555)	(74.544)	(67.801)
- MOVEMENT IN EXCHANGE RATE	5.079	4.947	4.988	5.045	4.950
AVERAGE UNIT OVER/(UNDER) RECOVERY 28/07/2017 - 28/07/2017	(58.663)	(56.998)	(67.567)	(69.499)	(62.851)

### R/\$ EXCHANGE RATE - (R/\$ 13.0325- 28/07/2017)

#### EXCHANGE RATE USED IN BASIC FUEL PRICE



#### INTERNATIONAL PRODUCT PRICES OF BASKET USED IN BASIC FUEL PRICE



#### BASIC FUEL PRICE IN SA CENTS PER LITRE

