

## UPDATE OF THE BASIC FUEL PRICE

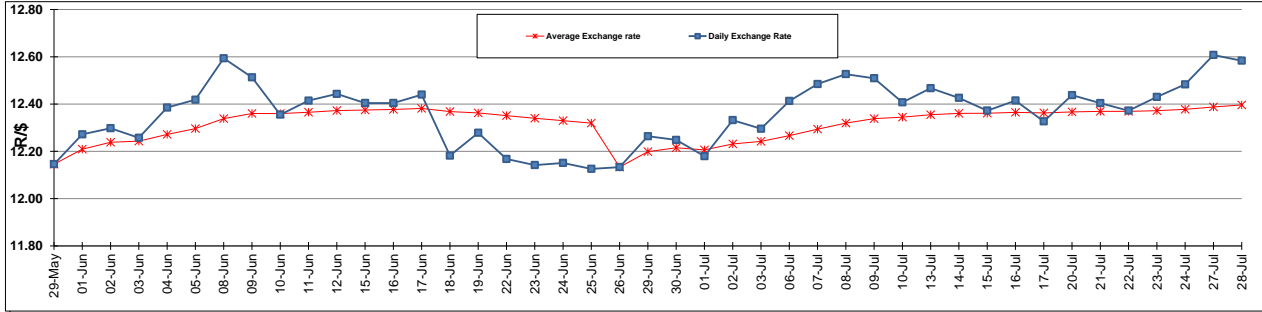
	PETROL 95 ULP	PETROL 93 ULP & LRP	DIESEL 0.05%	DIESEL 0.005%	ILL. PAR.
GAUTENG PUMP PRICE (SA c/l) AS FROM 01/07/2015	1,377.000	1,352.000	-	-	-
WHOLESALE PRICE (SA c/l) AS FROM 01/07/2015	-	-	1,170.790	1,174.190	786.828
SINGLE NATIONAL MAXIMUM RETAIL PRICE	-	-	-	-	1,014.000
BASIC FUEL PRICE - 28/07/2015 (SA c/l)	613.977	594.629	531.480	538.073	528.238
PRESS RELEASE CONTRIBUTION TO BFP 01/07/2015 - 28/07/2015 (SA c/l)	703.650	688.650	642.630	646.030	629.128
UNIT OVER/(UNDER) RECOVERY (SA c/l) - 28/07/2015	89.673	94.021	111.150	107.957	100.890
AVERAGE BASIC FUEL PRICE 26/06/2015 - 28/07/2015	651.096	633.720	569.220	574.915	560.158
AVERAGE UNIT OVER/(UNDER) RECOVERY 26/06/2015 - 28/07/2015	47.206	49.190	72.888	70.593	68.188

### ANALYSIS MOVEMENT OF AVERAGE OVER/(UNDER) RECOVERY

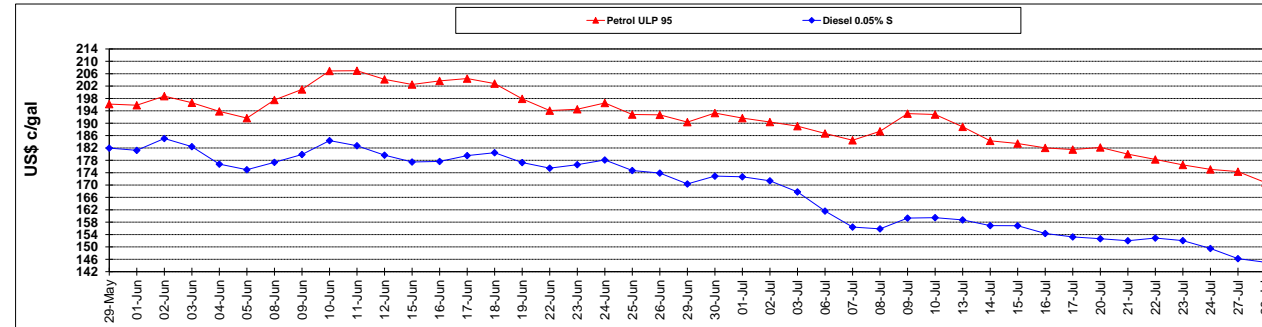
	PETROL 95	PETROL 93	DIESEL 0.05%	DIESEL 0.005%	ILL. PAR.
- MOVEMENT IN INTERNATIONAL PRODUCT PRICES	51.240	53.117	76.415	74.155	71.657
- MOVEMENT IN EXCHANGE RATE	(4.034)	(3.926)	(3.527)	(3.562)	(3.470)
AVERAGE UNIT OVER/(UNDER) RECOVERY 26/06/2015 - 28/07/2015	47.206	49.190	72.888	70.593	68.188

**R/\$ EXCHANGE RATE - (R/\$ 12.5834 - 28/07/2015)**

### EXCHANGE RATE USED IN BASIC FUEL PRICE



### INTERNATIONAL PRODUCT PRICES OF BASKET USED IN BASIC FUEL PRICE



### BASIC FUEL PRICE IN SA CENTS PER LITRE

