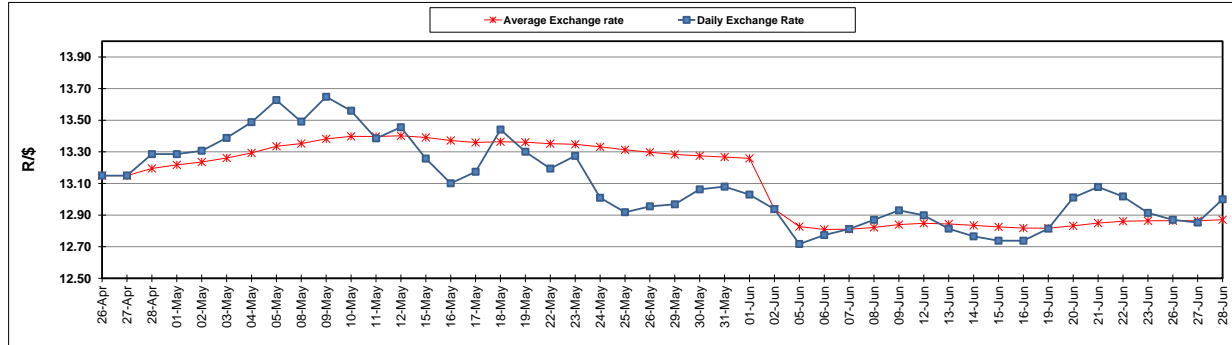


	PETROL 95 ULP	PETROL 93 ULP & LRP	DIESEL 0.05%	DIESEL 0.005%	ILL. PAR.
GAUTENG PUMP PRICE (SA c/l) AS FROM 07/06/2017	1 354.000	1 332.000	-	-	-
WHOLESALE PRICE (SA c/l) AS FROM 07/06/2017	-	-	1 157.330	1 161.730	714.088
SINGLE NATIONAL MAXIMUM RETAIL PRICE	-	-	-	-	917.000
BASIC FUEL 28/06/2017 (SA c/l)	507.959	491.843	495.627	500.513	496.237
PRESS RELEASE CONTRIBUTION TO BFP 07/06/2017 - 28/06/2017 (SA c/l)	572.670	560.670	545.630	550.030	543.128
UNIT OVER/(UNDER) RECOVERY (SA c/l) - 28/06/2017	64.711	68.827	50.003	49.517	46.891
AVERAGE BASIC FUEL PRICE 02/06/2017 - 28/06/2017	508.905	495.979	489.106	493.085	489.189
AVERAGE UNIT OVER/(UNDER) RECOVERY 02/06/2017 - 28/06/2017	67.712	68.638	60.156	60.577	57.413

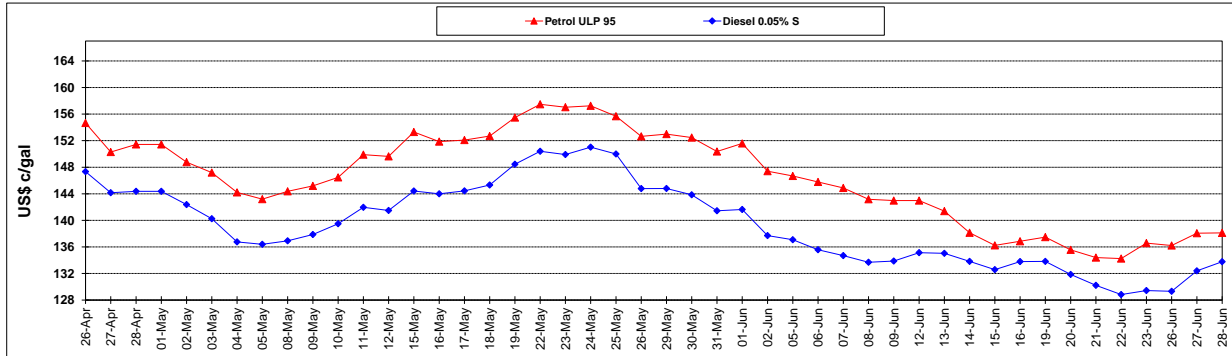
ANALYSIS MOVEMENT OF AVERAGE OVER/(UNDER) RECOVERY					
	PETROL 95	PETROL 93	DIESEL 0.05%	DIESEL 0.005%	ILL. PAR.
- MOVEMENT IN INTERNATIONAL PRODUCT PRICES	65.387	66.372	57.922	58.324	55.178
- MOVEMENT IN EXCHANGE RATE	2.325	2.266	2.234	2.253	2.235
AVERAGE UNIT OVER/(UNDER) RECOVERY 02/06/2017 - 28/06/2017	67.712	68.638	60.156	60.577	57.413

R/\$ EXCHANGE RATE - (R/\$ 13.0000 - 28/06/2017)

### EXCHANGE RATE USED IN BASIC FUEL PRICE



### INTERNATIONAL PRODUCT PRICES OF BASKET USED IN BASIC FUEL PRICE



### BASIC FUEL PRICE IN SA CENTS PER LITRE

