

UPDATE OF THE BASIC FUEL PRICE

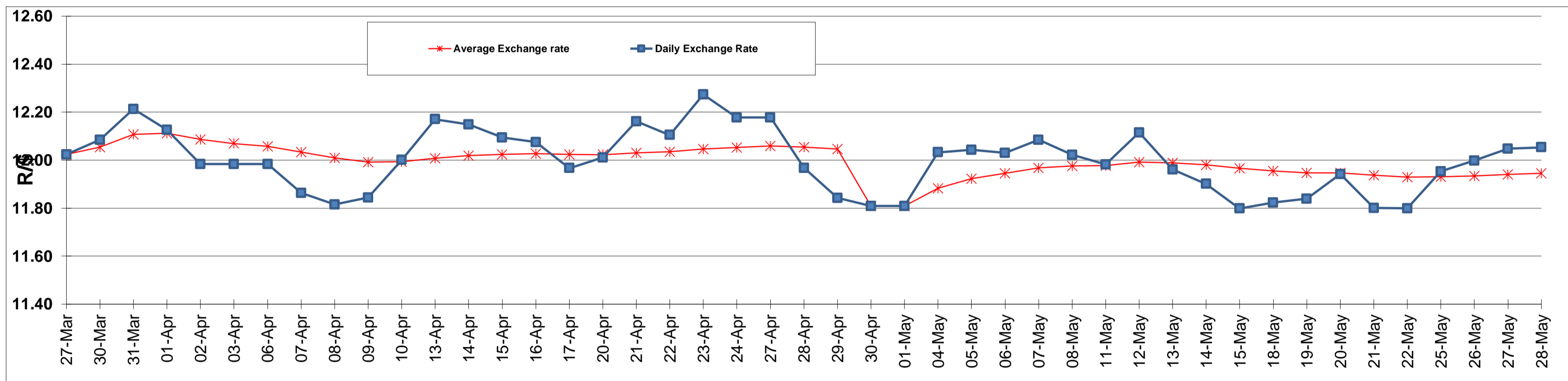
	PETROL 95 ULP	PETROL 93 ULP & LRP	DIESEL 0.05%	DIESEL 0.005%	ILL. PAR.
GAUTENG PUMP PRICE (SA c/l) AS FROM 07/05/2015	1,289.000	1,261.000	-	-	-
WHOLESALE PRICE (SA c/l) AS FROM 07/05/2015	-	-	1,122.790	1,129.190	743.828
SINGLE NATIONAL MAXIMUM RETAIL PRICE	-	-	-	-	957.000
BASIC FUEL PRICE - 28/05/2015 (SA c/l)	649.006	635.706	617.832	620.814	599.344
PRESS RELEASE CONTRIBUTION TO BFP 06/05/2015 - 28/05/2015 (SA c/l)	615.650	597.650	589.630	596.030	581.128
UNIT OVER/(UNDER) RECOVERY (SA c/l) - 28/05/2015	(33.356)	(38.056)	(28.202)	(24.784)	(18.216)
AVERAGE BASIC FUEL PRICE 30/04/2015 - 28/05/2015	662.891	649.638	640.565	642.992	623.690
AVERAGE UNIT OVER/(UNDER) RECOVERY 30/04/2015 - 28/05/2015	(47.241)	(51.988)	(49.983)	(46.010)	(41.610)

ANALYSIS MOVEMENT OF AVERAGE OVER/(UNDER) RECOVERY

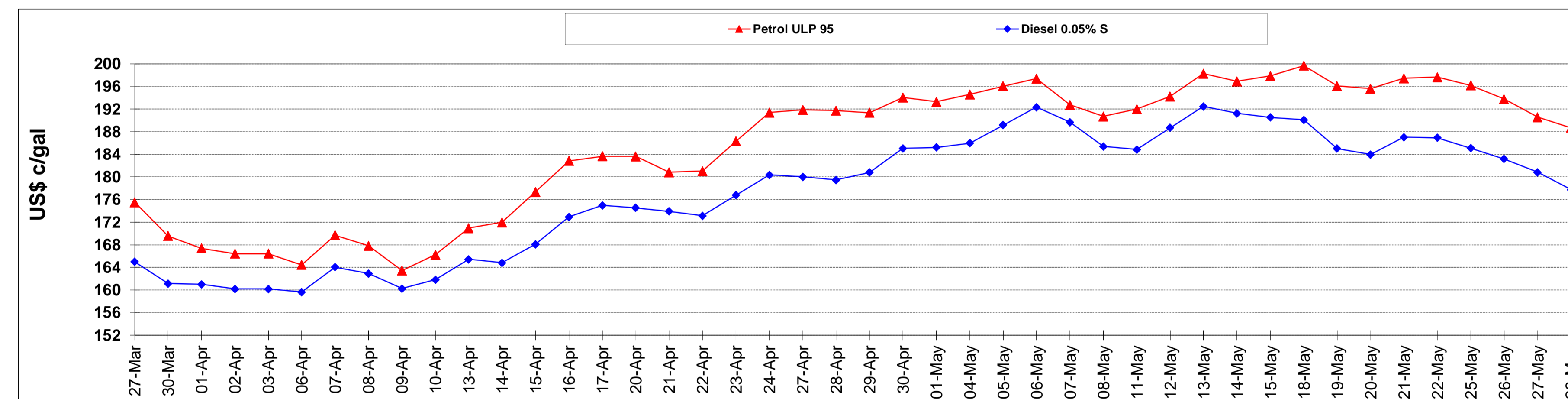
	PETROL 95	PETROL 93	DIESEL 0.05%	DIESEL 0.005%	ILL. PAR.
- MOVEMENT IN INTERNATIONAL PRODUCT PRICES	(52.818)	(57.454)	(55.372)	(51.420)	(46.857)
- MOVEMENT IN EXCHANGE RATE	5.577	5.466	5.389	5.410	5.247
AVERAGE UNIT OVER/(UNDER) RECOVERY 30/04/2015 - 28/05/2015	(47.241)	(51.988)	(49.983)	(46.010)	(41.610)

R/\$ EXCHANGE RATE - (R/\$ 12.0536 - 28/05/2015)

EXCHANGE RATE USED IN BASIC FUEL PRICE



INTERNATIONAL PRODUCT PRICES OF BASKET USED IN BASIC FUEL PRICE



BASIC FUEL PRICE IN SA CENTS PER LITRE

