

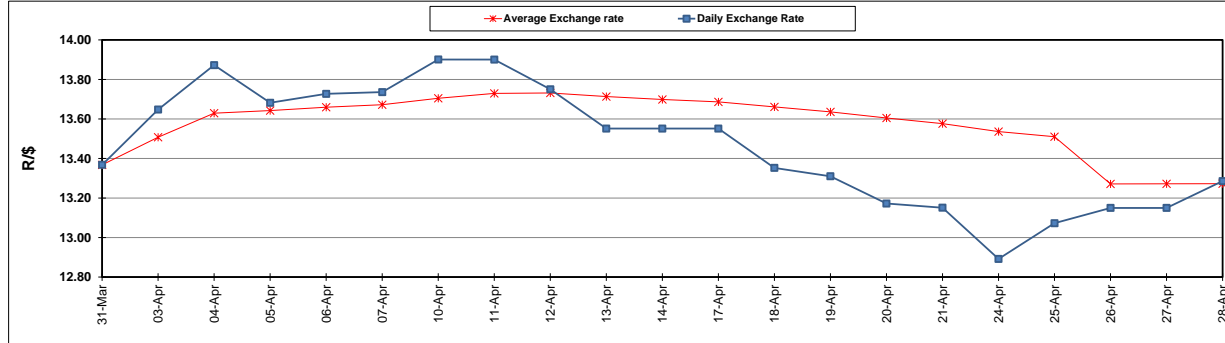
	PETROL 95 ULP	PETROL 93 ULP & LRP	DIESEL 0.05%	DIESEL 0.005%	ILL. PAR.
GAUTENG PUMP PRICE (SA c/l) AS FROM 03/05/2017	1 379.000	1 357.000	-	-	-
WHOLESALE PRICE (SA c/l) AS FROM 03/05/2017	-	-	1 180.330	1 184.730	736.088
SINGLE NATIONAL MAXIMUM RETAIL PRICE	-	-	-	-	947.000
BASIC FUEL PRICE - 28/04/2017 (SA c/l)	564.195	548.114	541.826	545.894	534.940
PRESS RELEASE CONTRIBUTION TO BFP 26/04/2017 - 28/04/2017 (SA c/l)	548.670	536.670	538.630	541.030	531.128
UNIT OVER/(UNDER) RECOVERY (SA c/l) - 28/04/2017	(15.525)	(11.444)	(3.196)	(4.864)	(3.812)
AVERAGE BASIC FUEL PRICE 26/04/2017 - 28/04/2017	562.826	546.619	541.400	545.776	534.350
AVERAGE UNIT OVER/(UNDER) RECOVERY 26/04/2017 - 28/04/2017	(14.156)	(9.949)	(2.770)	(4.746)	(3.222)

ANALYSIS MOVEMENT OF AVERAGE OVER/(UNDER) RECOVERY

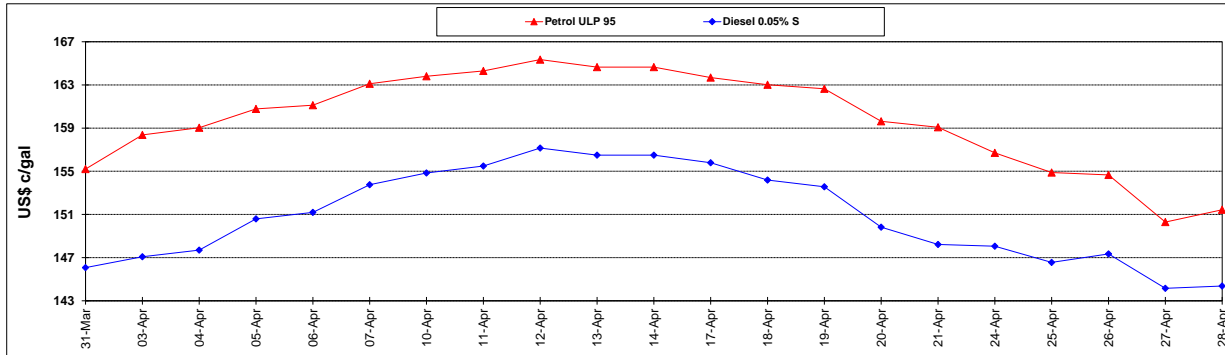
	PETROL 95	PETROL 93	DIESEL 0.05%	DIESEL 0.005%	ILL. PAR.
- MOVEMENT IN INTERNATIONAL PRODUCT PRICES	(27.613)	(23.019)	(15.715)	(17.796)	(15.999)
- MOVEMENT IN EXCHANGE RATE	13.457	13.070	12.945	13.050	12.777
AVERAGE UNIT OVER/(UNDER) RECOVERY 26/04/2017 - 28/04/2017	(14.156)	(9.949)	(2.770)	(4.746)	(3.222)

R/\$ EXCHANGE RATE - (R/\$ 13.2855 - 28/04/2017)

EXCHANGE RATE USED IN BASIC FUEL PRICE



INTERNATIONAL PRODUCT PRICES OF BASKET USED IN BASIC FUEL PRICE



BASIC FUEL PRICE IN SA CENTS PER LITRE

