

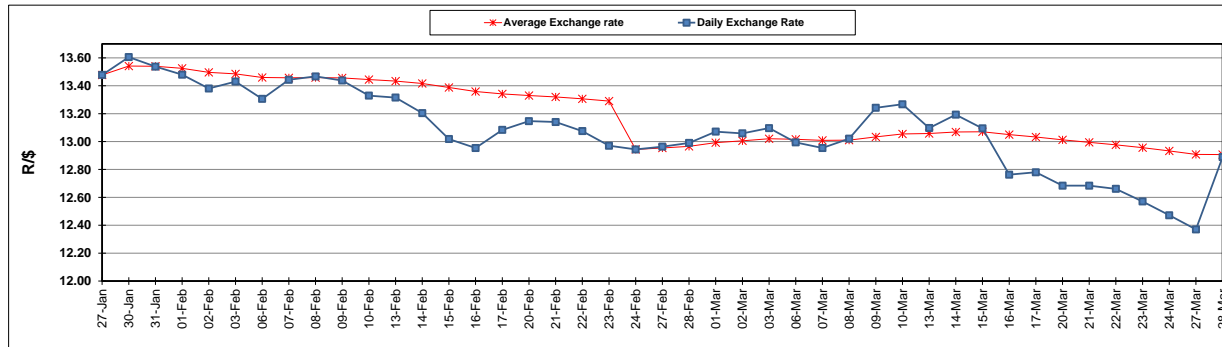
	PETROL 95 ULP	PETROL 93 ULP & LRP	DIESEL 0.05%	DIESEL 0.005%	ILL. PAR.
GAUTENG PUMP PRICE (SA c/l) AS FROM 01/03/2017	1 354.000	1 330.000	-	-	-
WHOLESALE PRICE (SA c/l) AS FROM 01/03/2017	-	-	1 160.830	1 163.230	750.588
SINGLE NATIONAL MAXIMUM RETAIL PRICE	-	-	-	-	966.000
BASIC FUEL PRICE - 28/03/2017 (SA c/l)	545.511	530.406	520.638	523.452	517.794
PRESS RELEASE CONTRIBUTION TO BFP 01/03/2017 - 28/03/2017 (SA c/l)	612.870	598.870	588.630	591.030	583.128
UNIT OVER/(UNDER) RECOVERY (SA c/l) - 28/03/2017	67.359	68.464	67.992	67.578	65.334
AVERAGE BASIC FUEL PRICE 24/02/2017 - 28/03/2017	549.319	537.114	539.566	542.487	532.664
AVERAGE UNIT OVER/(UNDER) RECOVERY 24/02/2017- 28/03/2017	64.595	62.800	49.325	48.804	51.507

ANALYSIS MOVEMENT OF AVERAGE OVER/(UNDER) RECOVERY

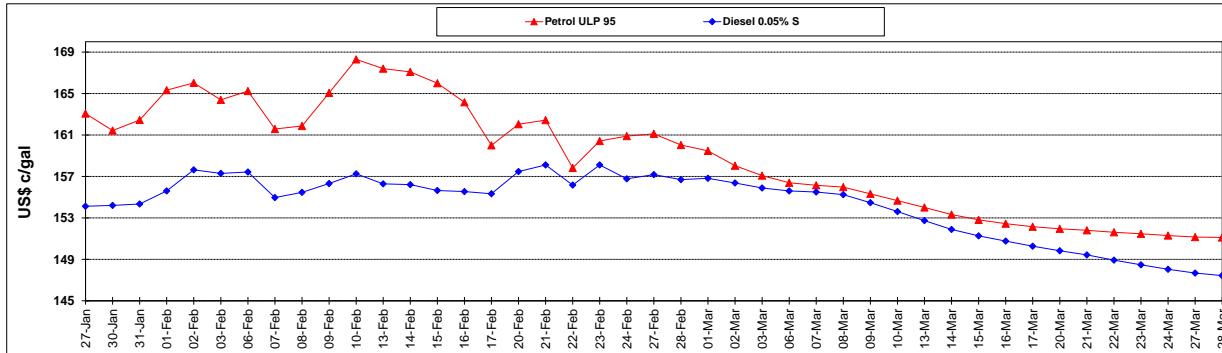
	PETROL 95	PETROL 93	DIESEL 0.05%	DIESEL 0.005%	ILL. PAR.
- MOVEMENT IN INTERNATIONAL PRODUCT PRICES	61.904	60.169	46.683	46.148	48.899
- MOVEMENT IN EXCHANGE RATE	2.690	2.630	2.642	2.656	2.608
AVERAGE UNIT OVER/(UNDER) RECOVERY 24/02/2017 - 28/03/2017	64.595	62.800	49.325	48.804	51.507

R/\$ EXCHANGE RATE - (R/\$ 12.8888 - 28/03/2017)

EXCHANGE RATE USED IN BASIC FUEL PRICE



INTERNATIONAL PRODUCT PRICES OF BASKET USED IN BASIC FUEL PRICE



BASIC FUEL PRICE IN SA CENTS PER LITRE

