

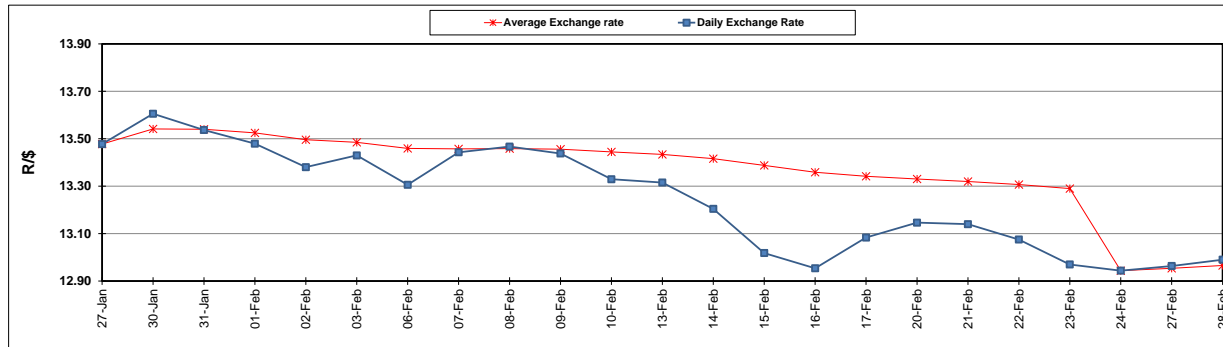
	PETROL 95 ULP	PETROL 93 ULP & LRP	DIESEL 0.05%	DIESEL 0.005%	ILL. PAR.
GAUTENG PUMP PRICE (SA c/l) AS FROM 01/03/2017	1 354.000	1 330.000	-	-	-
WHOLESALE PRICE (SA c/l) AS FROM 01/03/2017	-	-	1 160.830	1 163.230	750.588
SINGLE NATIONAL MAXIMUM RETAIL PRICE	-	-	-	-	966.000
BASIC FUEL PRICE - 28/02/2017 (SA c/l)	576.541	564.440	571.953	575.207	566.247
PRESS RELEASE CONTRIBUTION TO BFP 24/02/2017 - 28/02/2017 (SA c/l)	620.870	606.870	590.630	593.030	591.128
UNIT OVER/(UNDER) RECOVERY (SA c/l) - 28/02/2017	44.329	42.430	18.677	17.823	24.881
AVERAGE BASIC FUEL PRICE 24/02/2017 - 28/02/2017	582.902	571.391	574.195	577.256	568.291
AVERAGE UNIT OVER/(UNDER) RECOVERY 24/02/2017- 28/02/2017	37.968	35.479	16.435	15.774	22.837

### ANALYSIS MOVEMENT OF AVERAGE OVER/(UNDER) RECOVERY

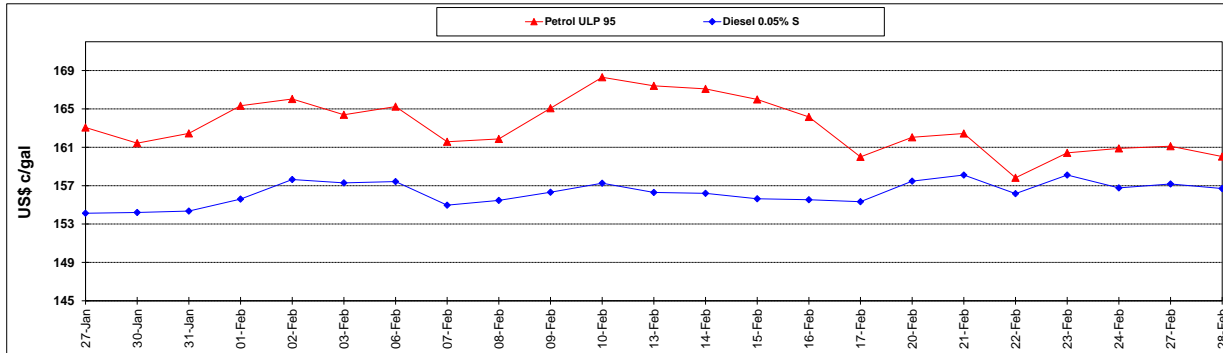
	PETROL 95	PETROL 93	DIESEL 0.05%	DIESEL 0.005%	ILL. PAR.
- MOVEMENT IN INTERNATIONAL PRODUCT PRICES	37.779	35.294	16.249	15.587	22.653
- MOVEMENT IN EXCHANGE RATE	0.189	0.185	0.186	0.187	0.184
AVERAGE UNIT OVER/(UNDER) RECOVERY 24/02/2017 - 28/02/2017	37.968	35.479	16.435	15.774	22.837

### R/\$ EXCHANGE RATE - (R/\$ 12.9900- 28/02/2017)

#### EXCHANGE RATE USED IN BASIC FUEL PRICE



#### INTERNATIONAL PRODUCT PRICES OF BASKET USED IN BASIC FUEL PRICE



#### BASIC FUEL PRICE IN SA CENTS PER LITRE

