

	PETROL 95 ULP	PETROL 93 ULP & LRP	DIESEL 0.05%	DIESEL 0.005%	ILL. PAR.
GAUTENG PUMP PRICE (SA c/l) AS FROM 05/12/2018	1 524.000	1 501.000	-	-	-
WHOLESALE PRICE (SA c/l) AS FROM 05/12/2018	-	-	1 467.340	1 472.740	951.678
SINGLE NATIONAL MAXIMUM RETAIL PRICE	-	-	-	-	1 231.000
BASIC FUEL PRICE - 27/12/2018 (SA c/l)	540.181	529.245	620.496	624.581	639.801
PRESS RELEASE CONTRIBUTION TO BFP 27/12/2018 - 27/12/2018 (SA c/l)	637.550	624.550	767.630	773.030	774.128
UNIT OVER/(UNDER) RECOVERY - 27/12/2018 (SA c/l)	97.369	95.305	147.134	148.449	134.327
AVERAGE BASIC FUEL PRICE 27/12/2018 - 27/12/2018	540.181	529.245	620.496	624.581	639.801
AVERAGE UNIT OVER/(UNDER) RECOVERY 27/12/2018 - 27/12/2018	97.369	95.305	147.134	148.449	134.327

ANALYSIS MOVEMENT OF AVERAGE OVER/(UNDER) RECOVERY

- MOVEMENT IN INTERNATIONAL PRODUCT PRICES

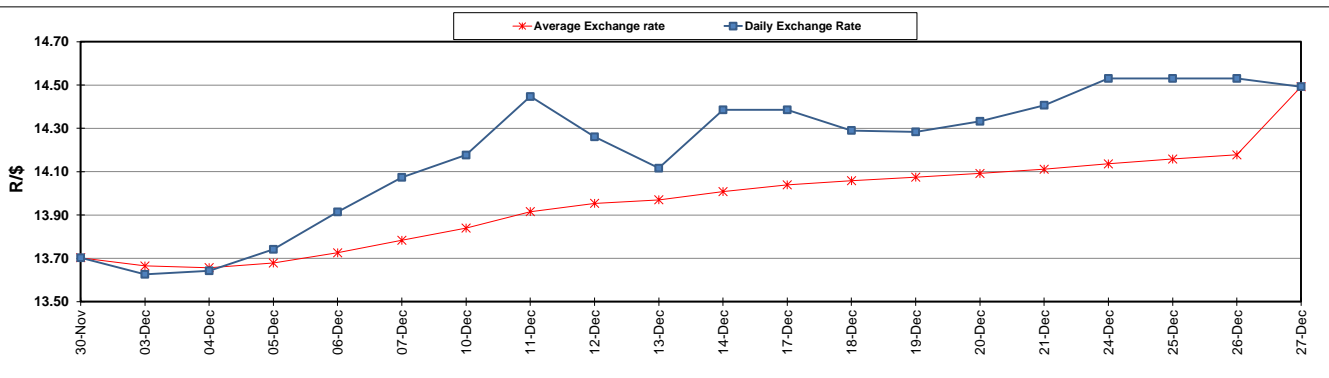
- MOVEMENT IN EXCHANGE RATE

AVERAGE UNIT OVER/(UNDER) RECOVERY 27/12/2018 - 27/12/2018

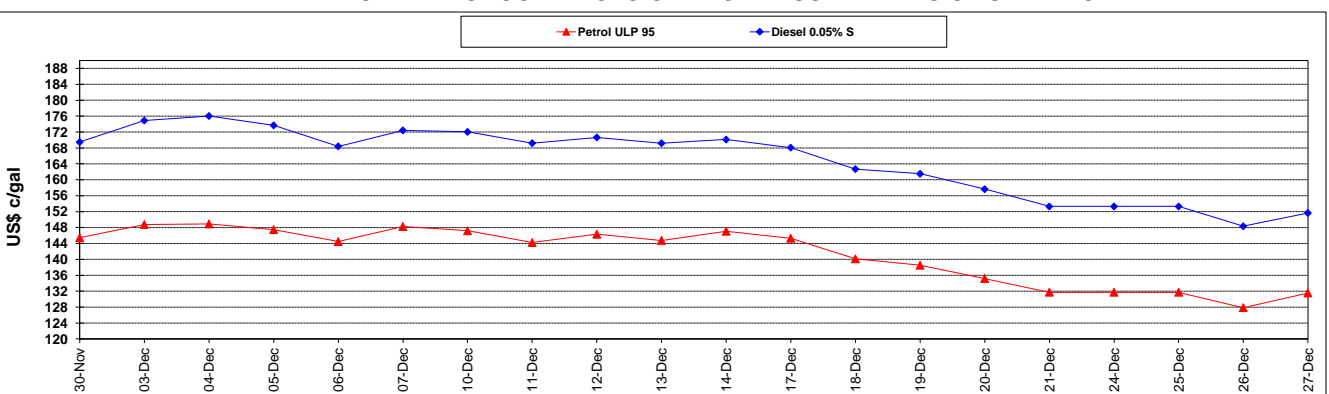
	PETROL 95	PETROL 93	DIESEL 0.05%	DIESEL 0.005%	ILL. PAR.
	109.099	106.797	160.608	162.012	148.220
	(11.730)	(11.492)	(13.474)	(13.563)	(13.893)
	97.369	95.305	147.134	148.449	134.327

R/\$ EXCHANGE RATE - (R/\$14.4925 - 27/12/2018)

EXCHANGE RATE USED IN BASIC FUEL PRICE



INTERNATIONAL PRODUCT PRICES OF BASKET USED IN BASIC FUEL PRICE



BASIC FUEL PRICE IN SA CENTS PER LITRE

