

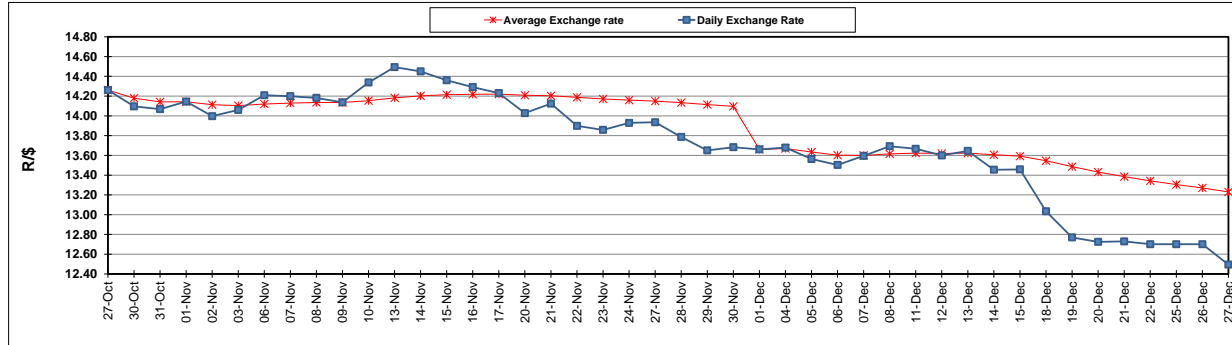
	PETROL 95 ULP	PETROL 93 ULP & LRP	DIESEL 0.05%	DIESEL 0.005%	ILL. PAR.
GAUTENG PUMP PRICE (SA c/l) AS FROM 07/12/2017	1 476.000	1 449.000	-	-	-
WHOLESALE PRICE (SA c/l) AS FROM 07/12/2017	-	-	1 295.630	1 302.030	865.388
SINGLE NATIONAL MAXIMUM RETAIL PRICE	-	-	-	-	1 119.000
BASIC FUEL PRICE - 27/12/2017 (SA c/l)	623.329	612.474	642.958	645.468	645.623
PRESS RELEASE CONTRIBUTION TO BFP 05/12/2017 - 27/12/2017 (SA c/l)	686.170	669.170	684.630	691.030	695.128
UNIT OVER/(UNDER) RECOVERY - 27/12/2017 (SA c/l)	62.841	56.696	41.672	45.562	49.505
AVERAGE BASIC FUEL PRICE 01/12/2017 - 27/12/2017	642.095	630.231	653.012	656.188	655.266
AVERAGE UNIT OVER/(UNDER) RECOVERY 01/12/2017 - 27/12/2017	33.480	28.344	21.986	25.684	28.178

### ANALYSIS MOVEMENT OF AVERAGE OVER/(UNDER) RECOVERY

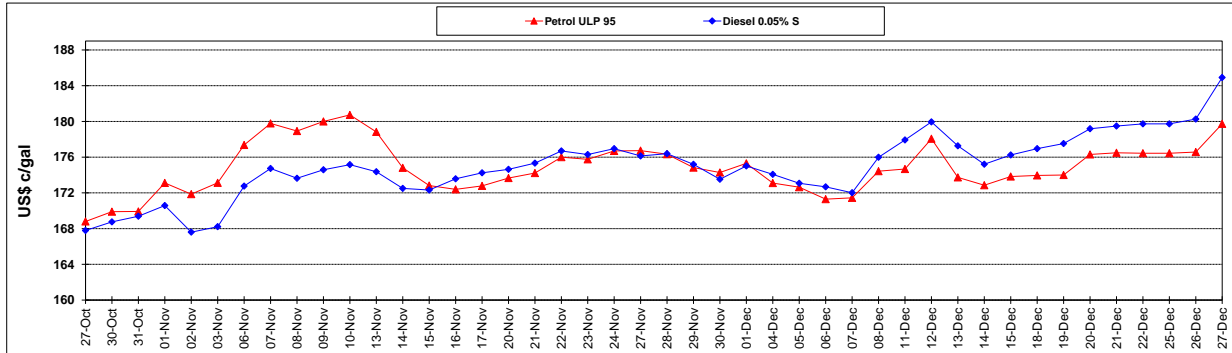
	PETROL 95	PETROL 93	DIESEL 0.05%	DIESEL 0.005%	ILL. PAR.
- MOVEMENT IN INTERNATIONAL PRODUCT PRICES	(8.554)	(12.913)	(20.762)	(17.272)	(14.718)
- MOVEMENT IN EXCHANGE RATE	42.034	41.257	42.748	42.956	42.896
AVERAGE UNIT OVER/(UNDER) RECOVERY 01/12/2017 - 27/12/2017	33.480	28.344	21.986	25.684	28.178

R/\$ EXCHANGE RATE - (R/\$ 12.4945 - 27/12/2017)

### EXCHANGE RATE USED IN BASIC FUEL PRICE



### INTERNATIONAL PRODUCT PRICES OF BASKET USED IN BASIC FUEL PRICE



### BASIC FUEL PRICE IN SA CENTS PER LITRE

