

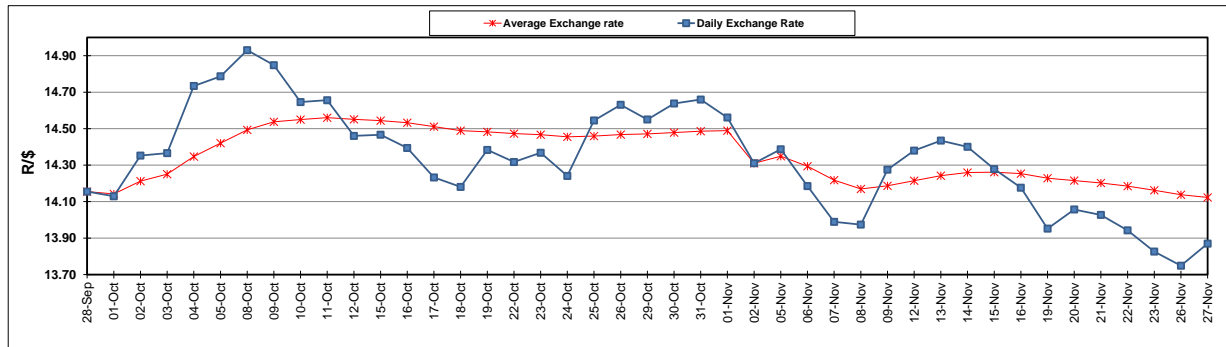
	PETROL 95 ULP	PETROL 93 ULP & LRP	DIESEL 0.05%	DIESEL 0.005%	ILL. PAR.
GAUTENG PUMP PRICE (SA c/l) AS FROM 07/11/2018	1 708.000	1 685.000	-	-	-
WHOLESALE PRICE (SA c/l) AS FROM 07/11/2018	-	-	1 612.750	1 620.150	1 085.088
SINGLE NATIONAL MAXIMUM RETAIL PRICE	-	-	-	-	1 409.000
BASIC FUEL PRICE - 27/11/2018 (SA c/l)	576.438	566.966	678.913	683.564	695.327
PRESS RELEASE CONTRIBUTION TO BFP 07/11/2018 - 27/11/2018 (SA c/l)	829.250	816.250	917.630	925.030	912.128
UNIT OVER/(UNDER) RECOVERY - 27/11/2018 (SA c/l)	252.812	249.284	238.717	241.466	216.801
AVERAGE BASIC FUEL PRICE 02/11/2018 - 27/11/2018	647.924	637.681	773.555	779.358	779.570
AVERAGE UNIT OVER/(UNDER) RECOVERY 02/11/2018 - 27/11/2018	184.980	182.222	139.742	140.839	127.892

ANALYSIS MOVEMENT OF AVERAGE OVER/(UNDER) RECOVERY

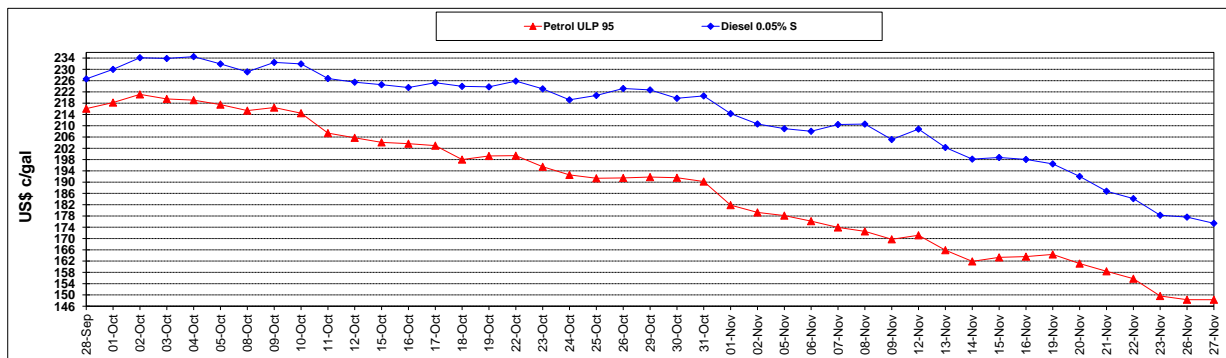
	PETROL 95	PETROL 93	DIESEL 0.05%	DIESEL 0.005%	ILL. PAR.
- MOVEMENT IN INTERNATIONAL PRODUCT PRICES	168.179	165.687	119.684	120.631	107.677
- MOVEMENT IN EXCHANGE RATE	16.800	16.535	20.058	20.208	20.214
AVERAGE UNIT OVER/(UNDER) RECOVERY 02/11/2018 - 27/11/2018	184.980	182.222	139.742	140.839	127.892

R/\$ EXCHANGE RATE - (R/\$13.8700 - 27/11/2018)

EXCHANGE RATE USED IN BASIC FUEL PRICE



INTERNATIONAL PRODUCT PRICES OF BASKET USED IN BASIC FUEL PRICE



BASIC FUEL PRICE IN SA CENTS PER LITRE

