

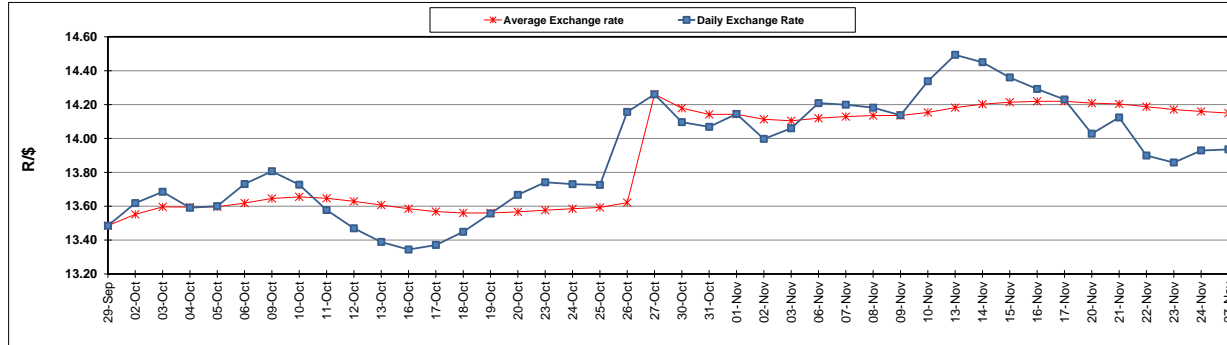
	PETROL 95 ULP	PETROL 93 ULP & LRP	DIESEL 0.05%	DIESEL 0.005%	ILL. PAR.
GAUTENG PUMP PRICE (SA c/l) AS FROM 01/11/2017	1 405.000	1 378.000	-	-	-
WHOLESALE PRICE (SA c/l) AS FROM 01/11/2017	-	-	1 235.330	1 244.730	792.088
SINGLE NATIONAL MAXIMUM RETAIL PRICE	-	-	-	-	1 021.000
BASIC FUEL PRICE - 27/11/2017 (SA c/l)	685.536	671.853	686.211	689.744	694.917
PRESS RELEASE CONTRIBUTION TO BFP 01/11/2017 - 27/11/2017 (SA c/l)	619.070	602.070	623.630	633.030	621.128
UNIT OVER/(UNDER) RECOVERY - 27/11/2017 (SA c/l)	(66.466)	(69.783)	(62.581)	(56.714)	(73.789)
AVERAGE BASIC FUEL PRICE 27/10/2017 - 27/11/2017	688.680	673.178	684.340	690.207	693.934
AVERAGE UNIT OVER/(UNDER) RECOVERY 27/10/2017 - 27/11/2017	(70.156)	(71.653)	(63.846)	(60.858)	(75.669)

ANALYSIS MOVEMENT OF AVERAGE OVER/(UNDER) RECOVERY

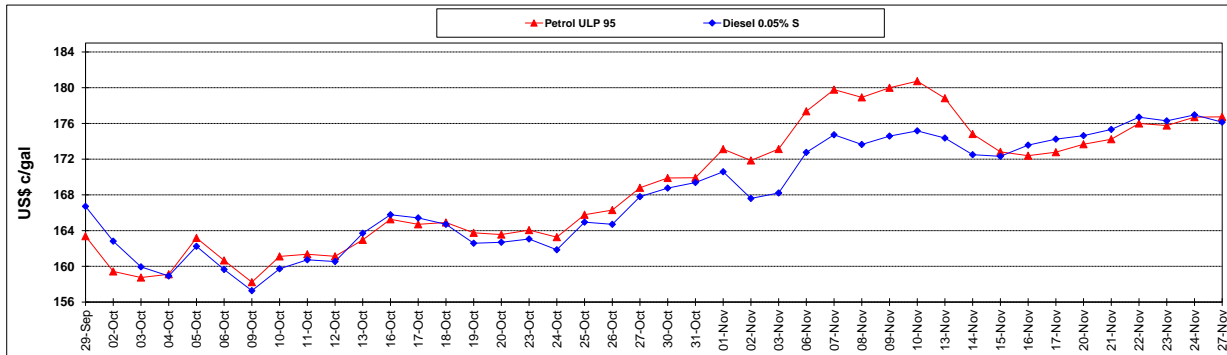
	PETROL 95	PETROL 93	DIESEL 0.05%	DIESEL 0.005%	ILL. PAR.
- MOVEMENT IN INTERNATIONAL PRODUCT PRICES	(44.432)	(46.509)	(38.285)	(35.079)	(49.751)
- MOVEMENT IN EXCHANGE RATE	(25.723)	(25.144)	(25.561)	(25.780)	(25.919)
AVERAGE UNIT OVER/(UNDER) RECOVERY 27/10/2017 - 27/11/2017	(70.156)	(71.653)	(63.846)	(60.858)	(75.669)

R/\$ EXCHANGE RATE - (R/\$ 13.9353 - 27/11/2017)

EXCHANGE RATE USED IN BASIC FUEL PRICE



INTERNATIONAL PRODUCT PRICES OF BASKET USED IN BASIC FUEL PRICE



BASIC FUEL PRICE IN SA CENTS PER LITRE

