

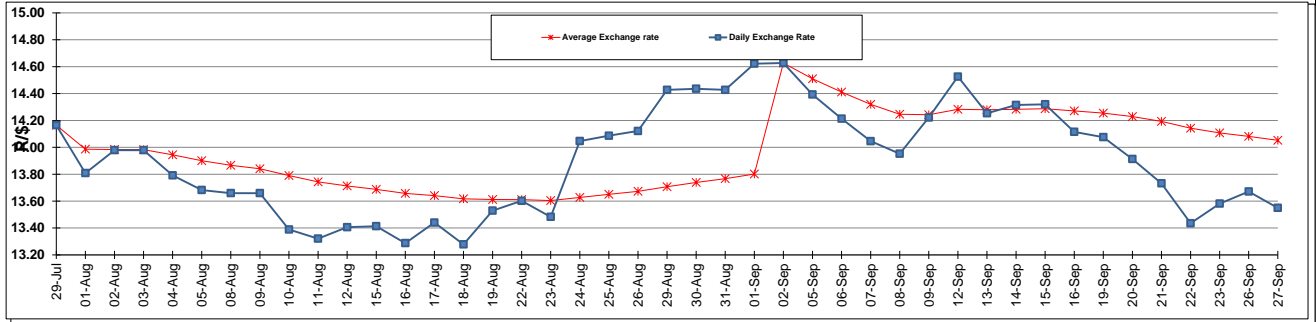
	PETROL 95 ULP	PETROL 93 ULP & LRP	DIESEL 0.05%	DIESEL 0.005%	ILL. PAR.
GAUTENG PUMP PRICE (SA c/l) AS FROM 07/09/2016	1 217.000	1 190.000	-	-	-
WHOLESALE PRICE (SA c/l) AS FROM 07/09/2016	-	-	1 048.870	1 052.270	647.628
SINGLE NATIONAL MAXIMUM RETAIL PRICE	-	-	-	-	828.000
BASIC FUEL PRICE - 27/09/2016 (SA c/l)	517.202	505.484	493.365	496.253	492.935
PRESS RELEASE CONTRIBUTION TO BFP 07/09/2016 - 27/09/2016 (SA c/l)	495.970	478.970	482.630	486.030	486.128
UNIT OVER/(UNDER) RECOVERY (SA c/l) - 27/09/2016	(21.232)	(26.514)	(10.735)	(10.223)	(6.807)
AVERAGE BASIC FUEL PRICE 02/09/2016 - 27/09/2016	542.535	527.241	513.922	516.726	515.384
AVERAGE UNIT OVER/(UNDER) RECOVERY 02/09/2016 - 27/09/2016	(43.565)	(45.271)	(23.292)	(22.530)	(21.423)

### ANALYSIS MOVEMENT OF AVERAGE OVER/(UNDER) RECOVERY

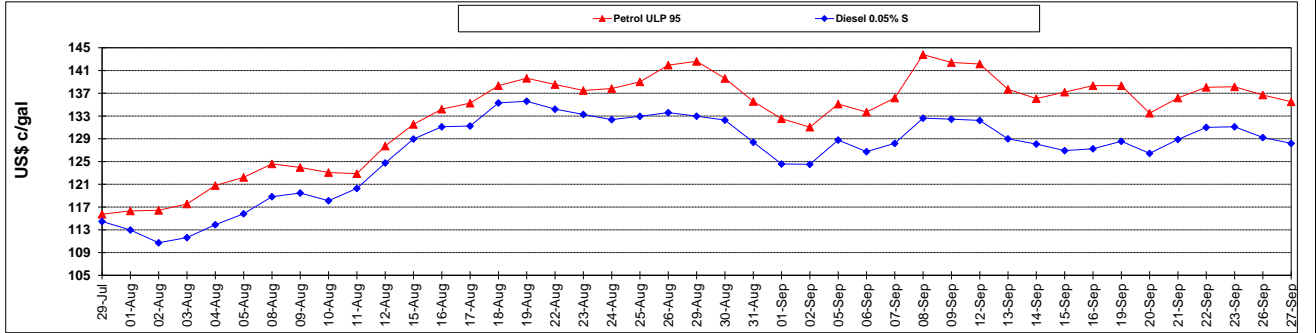
	PETROL 95	PETROL 93	DIESEL 0.05%	DIESEL 0.005%	ILL. PAR.
- MOVEMENT IN INTERNATIONAL PRODUCT PRICES	(33.886)	(35.865)	(14.123)	(13.310)	(12.228)
- MOVEMENT IN EXCHANGE RATE	(9.679)	(9.406)	(9.169)	(9.219)	(9.195)
AVERAGE UNIT OVER/(UNDER) RECOVERY 02/09/2016 - 27/09/2016	(43.565)	(45.271)	(23.292)	(22.530)	(21.423)

**R/\$ EXCHANGE RATE - (R/\$ 13.5498 - 27/09/2016)**

### EXCHANGE RATE USED IN BASIC FUEL PRICE



### INTERNATIONAL PRODUCT PRICES OF BASKET USED IN BASIC FUEL PRICE



### BASIC FUEL PRICE IN SA CENTS PER LITRE

