

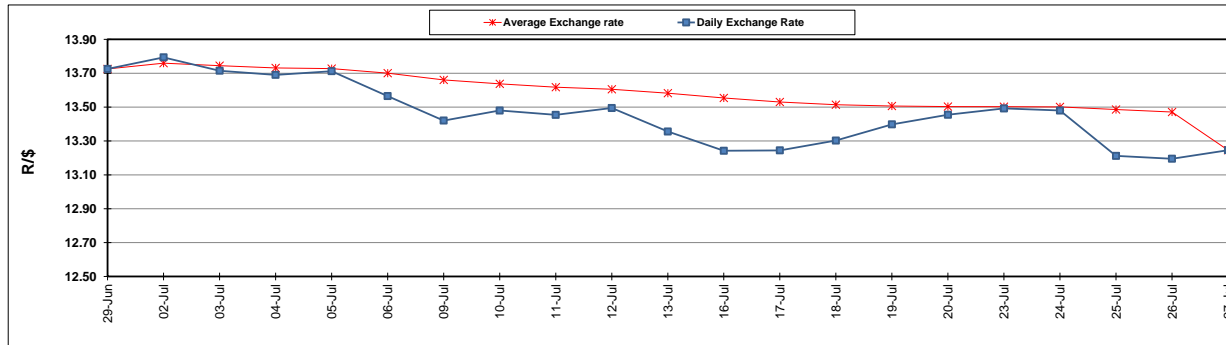
	PETROL 95 ULP	PETROL 93 ULP & LRP	DIESEL 0.05%	DIESEL 0.005%	ILL. PAR.
GAUTENG PUMP PRICE (SA c/l) AS FROM 01/08/2018	1 603.000	1 582.000	-	-	-
WHOLESALE PRICE (SA c/l) AS FROM 01/08/2018	-	-	1 440.830	1 445.230	953.088
SINGLE NATIONAL MAXIMUM RETAIL PRICE	-	-	-	-	1 233.000
BASIC FUEL PRICE - 27/08/2018 (SA c/l)	754.594	741.469	762.700	767.183	773.337
PRESS RELEASE CONTRIBUTION TO BFP 27/07/2018 - 27/07/2018 (SA c/l)	750.070	738.070	771.630	776.030	776.128
UNIT OVER/(UNDER) RECOVERY - 27/07/2018 (SA c/l)	(4.524)	(3.399)	8.930	8.847	2.791
AVERAGE BASIC FUEL PRICE 27/07/2018 - 27/07/2018	754.594	741.469	762.700	767.183	773.337
AVERAGE UNIT OVER/(UNDER) RECOVERY 27/06/2018 - 27/07/2018	(4.524)	(3.399)	8.930	8.847	2.791

### ANALYSIS MOVEMENT OF AVERAGE OVER/(UNDER) RECOVERY

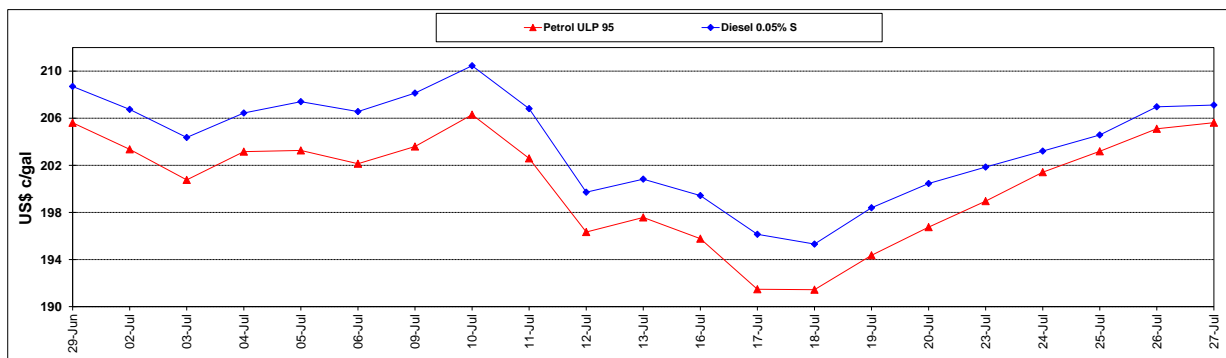
	PETROL 95	PETROL 93	DIESEL 0.05%	DIESEL 0.005%	ILL. PAR.
- MOVEMENT IN INTERNATIONAL PRODUCT PRICES	(17.370)	(16.022)	(4.054)	(4.214)	(10.374)
- MOVEMENT IN EXCHANGE RATE	12.846	12.623	12.984	13.061	13.165
AVERAGE UNIT OVER/(UNDER) RECOVERY 27/07/2018 - 27/07/2018	(4.524)	(3.399)	8.930	8.847	2.791

### R/\$ EXCHANGE RATE - (R/\$13.2458 - 27/07/2018)

#### EXCHANGE RATE USED IN BASIC FUEL PRICE



#### INTERNATIONAL PRODUCT PRICES OF BASKET USED IN BASIC FUEL PRICE



#### BASIC FUEL PRICE IN SA CENTS PER LITRE

