

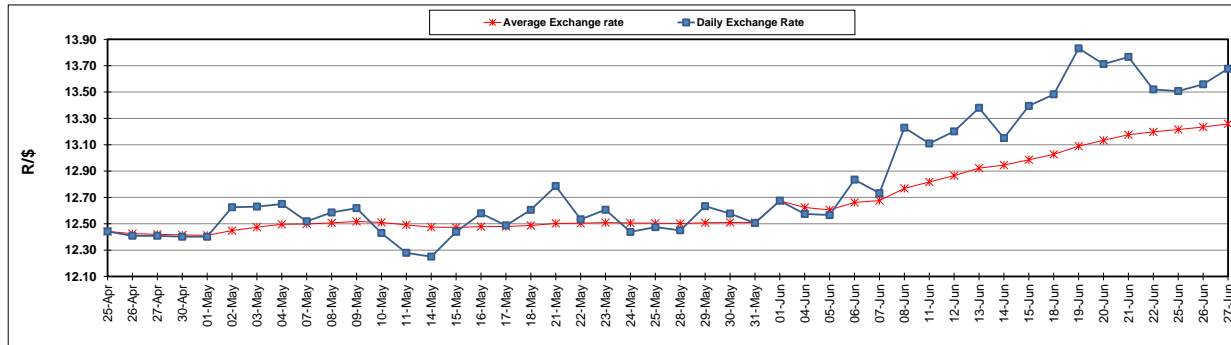
	PETROL 95 ULP	PETROL 93 ULP & LRP	DIESEL 0.05%	DIESEL 0.005%	ILL. PAR.
GAUTENG PUMP PRICE (SA c/l) AS FROM 06/06/2018	1 579.000	1 554.000	-	-	-
WHOLESALE PRICE (SA c/l) AS FROM 06/06/2018	-	-	1 418.830	1 425.230	927.088
SINGLE NATIONAL MAXIMUM RETAIL PRICE	-	-	-	-	1 198.000
BASIC FUEL PRICE - 27/06/2018 (SA c/l)	764.929	754.790	781.041	785.406	788.579
PRESS RELEASE CONTRIBUTION TO BFP 06/06/2018 - 27/06/2018 (SA c/l)	727.070	712.070	745.630	752.030	754.128
UNIT OVER/(UNDER) RECOVERY - 27/06/2018 (SA c/l)	(37.859)	(42.720)	(35.411)	(33.376)	(34.451)
AVERAGE BASIC FUEL PRICE 01/06/2018 - 27/06/2018	736.581	725.144	756.467	760.752	760.692
AVERAGE UNIT OVER/(UNDER) RECOVERY 01/06/2018 - 27/06/2018	(22.459)	(26.021)	(24.258)	(22.459)	(19.512)

ANALYSIS MOVEMENT OF AVERAGE OVER/(UNDER) RECOVERY

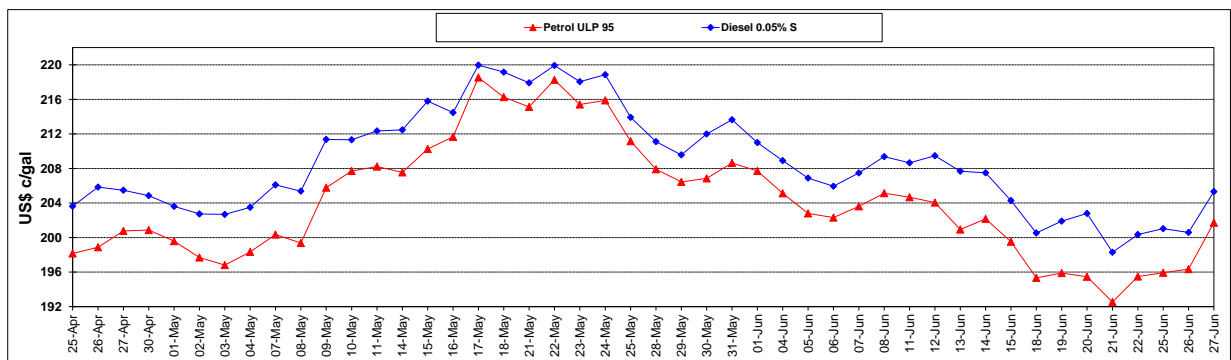
	PETROL 95	PETROL 93	DIESEL 0.05%	DIESEL 0.005%	ILL. PAR.
- MOVEMENT IN INTERNATIONAL PRODUCT PRICES	19.110	14.901	18.432	20.473	23.417
- MOVEMENT IN EXCHANGE RATE	(41.568)	(40.922)	(42.690)	(42.932)	(42.928)
AVERAGE UNIT OVER/(UNDER) RECOVERY 01/06/2018 - 27/06/2018	(22.459)	(26.021)	(24.258)	(22.459)	(19.512)

R/\$ EXCHANGE RATE - (R/\$13.6770 - 27/06/2018)

EXCHANGE RATE USED IN BASIC FUEL PRICE



INTERNATIONAL PRODUCT PRICES OF BASKET USED IN BASIC FUEL PRICE



BASIC FUEL PRICE IN SA CENTS PER LITRE

