

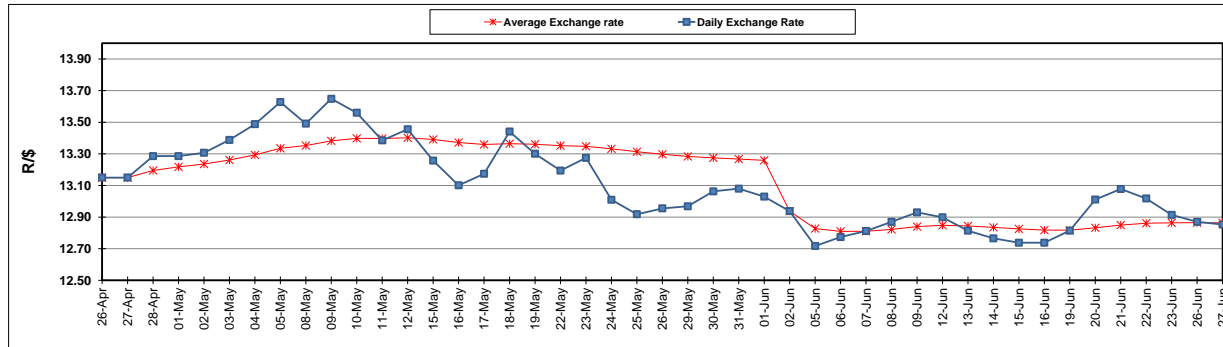
	PETROL 95 ULP	PETROL 93 ULP & LRP	DIESEL 0.05%	DIESEL 0.005%	ILL. PAR.
GAUTENG PUMP PRICE (SA c/l) AS FROM 07/06/2017	1 354.000	1 332.000	-	-	-
WHOLESALE PRICE (SA c/l) AS FROM 07/06/2017	-	-	1 157.330	1 161.730	714.088
SINGLE NATIONAL MAXIMUM RETAIL PRICE	-	-	-	-	917.000
BASIC FUEL 27/06/2017 (SA c/l)	502.128	487.285	485.365	490.001	486.864
PRESS RELEASE CONTRIBUTION TO BFP 07/06/2017 - 27/06/2017 (SA c/l)	572.670	560.670	545.630	550.030	543.128
UNIT OVER/(UNDER) RECOVERY (SA c/l) - 27/06/2017	70.542	73.385	60.265	60.029	56.264
AVERAGE BASIC FUEL PRICE 02/06/2017 - 27/06/2017	508.958	496.209	488.743	492.672	488.797
AVERAGE UNIT OVER/(UNDER) RECOVERY 02/06/2017 - 27/06/2017	67.879	68.628	60.720	61.192	57.997

### ANALYSIS MOVEMENT OF AVERAGE OVER/(UNDER) RECOVERY

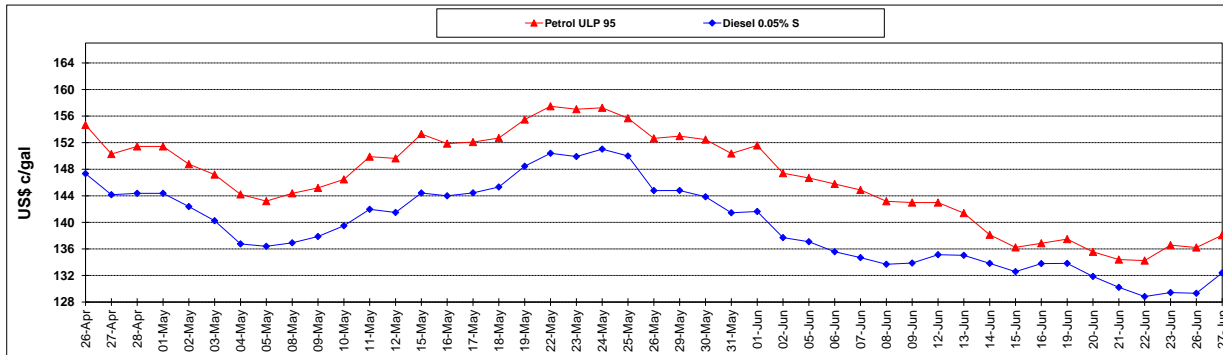
	PETROL 95	PETROL 93	DIESEL 0.05%	DIESEL 0.005%	ILL. PAR.
- MOVEMENT IN INTERNATIONAL PRODUCT PRICES	65.268	66.082	58.212	58.663	55.490
- MOVEMENT IN EXCHANGE RATE	2.611	2.546	2.508	2.528	2.508
AVERAGE UNIT OVER/(UNDER) RECOVERY 02/06/2017 - 27/06/2017	67.879	68.628	60.720	61.192	57.997

**R/\$ EXCHANGE RATE - (R/\$ 12.8528 - 27/06/2017)**

### EXCHANGE RATE USED IN BASIC FUEL PRICE



### INTERNATIONAL PRODUCT PRICES OF BASKET USED IN BASIC FUEL PRICE



### BASIC FUEL PRICE IN SA CENTS PER LITRE

